



PRODUCT
AND
PRICE
MANUAL

VICTOR ADDING MACHINE CO.

Factory & Executive Offices

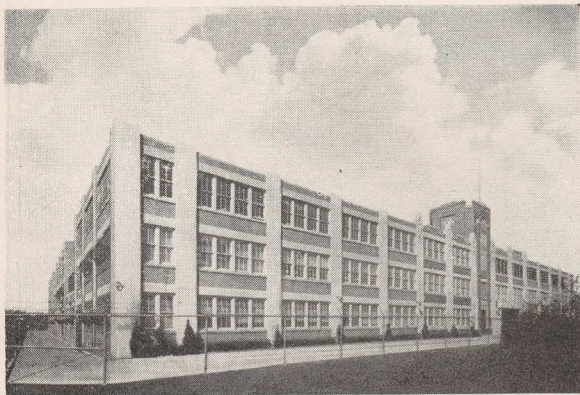
3900 North Rockwell Street

Chicago, Illinois

Copyright 1940

Revised January, 1961

VICTOR ADDING MACHINES



VICTOR ADDING MACHINE CO. EXECUTIVE OFFICES & FACTORY CHICAGO, ILLINOIS

The Victor Adding Machine Co.'s business philosophy is founded on three cardinal points.

1. Build quality products of the most modern design.
2. Achieve the greatest efficiency in manufacture through the economies of mass production.
3. Price all products on a narrow profit margin to make them available to the greatest number of users, depending on volume for profit.

NOTE: Pages 3 to 8 eliminated. For complete list of Victor Sales and Service Points, see your Keys to Better Business catalog.

Q U A L I T Y S I N C E 1 9 1 8

MACHINES

MACHINES

VICTOR ADDING MACHINES

SINCE 1918 Victor Adding Machines have contributed to the progress of modern business. It is with genuine pride that the Victor Adding Machine Co. regards the contributions which have been made by its products. Down the busy active years these sturdy machines have faithfully performed the tasks assigned them. Now—nearly two million Victors are in regular use.



VICTOR ADDING MACHINE CO.

Chicago, Ill.

Revised June 1961

VICTOR ADDING MACHINES

The complete line of—

VICTOR VALUES

automatic
PRINTING
calculators

The world's most fully automatic calculator with just one compact, 10-Key keyboard and only one set of numeral keys. Available in a choice of models to fit specific needs and budgets.

ADDING-SUBTRACTING MACHINES

Premier

Precision automatic-electric adding machines with same modern styling and versatile features of the Victor calculator. Choice of 10-Key or Full Keyboard models in Electric or Hand Operation with various listing and totaling capacities.

Imperial

Deluxe styling and high-price machine features at a truly budget price. The Imperials offer outstanding features in the medium price range. Available in 10-Key or Full Keyboard, electric and hand operation.

Champion

The biggest low-price value in adding machines on the market. Sturdily built, for long trouble-free heavy-duty performance. Choose from 22 models, electric or hand, credit balance or straight adder models. All subtractor models available in electric or hand operation.

PREMIER LINE **DIGITMATIC** PRINTERS

Basic adding, multiplying or calculating machines operated electrically and at high speeds without the need of an operator. Choice of six basic models in either 10-Key (serial entry) or Full Keyboard (parallel entry) design.

Q U A L I T Y S I N C E 1 9 1 8

VICTOR VALUE STANDARD FEATURES

Although each Victor line of quality figuring machines varies in the features offered, all Victor's maintain uniform precision engineering for reliable performance and the utmost in accuracy.

Here are just a few precision features found on all Victor figuring machines:

Finger Tip Control—figure and control keys beneath finger tips.

Feather Touch Keyboard—exceedingly light, yet fast and lively.

Natural Reading Angle—24 degree keyboard slant, easy to read.

All Items Visible—no tear-off bar to obstruct vision.

Quiet Operation—mechanism "floats" in case.

One Stroke Total—no wasted spacing stroke before the total.

Plainly Marked Symbols—prints true symbols such as "T" for total; "S" for subtotal; "N" for non-add, etc.

Automatic Space-Up—One blank space appears on tape after total, sub-total or credit balance operation.

Automatic Punctuation—decimal point and commas print automatically; makes figures easier to read.

Case-Hardened Friction Parts—to resist wear.

All Parts Cadmium Plated—to protect against rust.

Printing Press Action — eliminates parts, insures uniform print.

Line Lock—assures permanently accurate type alignment.

Cushioned Keys—protect key stems and internal mechanism.

Simplified Parts Movement—no complicated linkage to transmit motion from one direction to another.

Large Clean-Cut Type Faces—easy to read.

1911

...

...

...

...

...

...

...

...

...

...

...

...

...

...

...

...

VICTOR ADDING MACHINES



DeLuxe Automatic Printing Calculator MODEL 75-85-54

THE new Victor Automatic Printing Calculator simplifies every complex figuring problem. It's fast—convenient—accurate. The Victor Automatic Printing Calculator automatically divides or multiplies, printing only the significant figures and your correct answer. Exclusive Victor Master Control Lever lets you perform all operations on a compact single 10-key keyboard—division—multiplication—addition—subtraction.

The Total Transfer feature lets you divide or multiply any answer arrived at by previous multiplication, addition or subtraction — without re-entering the answer in your keyboard.

Finger-tip Constant Lever permits repeated division without re-entering the divisor or repeated multiplication without re-entering the multiplicand.

Special Automatic Printing Calculator MODEL 73-85-54

This Special model has all the features of the Deluxe calculator except for Automatic Constant division and multiplication and the Total Transfer feature.

VICTOR ADDING MACHINES

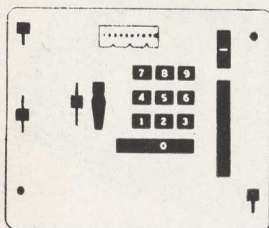
MODEL 75-85-54 SINGLE 10-KEY KEYBOARD VICTOR AUTOMATIC PRINTING CALCULATOR

Electrically Operated
Automatic Division—Automatic Multiplication
Total Transfer—Select-O-Matic Totaling
Constant Division—Constant Multiplication

Capacity, Listing 99,999,999.99
Capacity, Totaling 999,999,999.99

SAMPLE

KEYBOARD



TAPE

	. 0 0 T
	3 9 6 . 0 0
	1 3 2 . 0 0 —
	2 6 4 . 0 0 S
×	2 . 6 4
×	. 0 6
×	. 0 0
×	2 7 9 . 8 4 S
÷	2 7 9 . 8 4 S
÷	. 1 2
÷	2 3 . 3 2
÷	. 0 0 TC

Desk Size—9 $\frac{3}{4}$ "x14 $\frac{1}{2}$ "; **Height**—7 $\frac{3}{4}$ "; **Weight**—Approx. 24 lbs.

Two-Tone Metal Case—all working parts and paper roll are completely enclosed in a sand tone and brown case.

Finger Tip Control—all operations done on one "feather touch" keyboard. Figure keys spaced $\frac{3}{4}$ " from center to center.

Select-O-Matic Totaling—permits automatic totaling or sub-totaling from add bar.

Electrified Dual Non-Add-Repeat Key—located within finger-tip reach of the 10-Key keyboard.

Plainly Marked Symbols—"÷" for divide; "×" for multiply; "—" for subtract; "S" for subtotal; "T" for total; "TC" and "SC" for Credit Balance; "N" for non-add.

Faster Operation—180 RPM approx. Permits you to write answers while machine is multiplying.

Printing Press Action—eliminates unnecessary parts—insures uniform print.

Cushioned Keys—protects key stems and internal mechanism.

Large Clean-Cut Type Faces—easy to read.

Safety Switch—breaks circuit when "protecto-cover" hood is up.

Q U A L I T Y S I N C E 1 9 1 8

VICTOR ADDING MACHINES



DELUXE MULT-O-MATIC CALCULATOR MODEL 74-85-54

Here's a revolutionary new Victor with exclusive features that make it one of the fastest, most versatile figuring machines made. The Mult-O-Matic automatically multiplies printing only the two amounts being multiplied and your correct answer. All operations are done on one simple keyboard . . . addition . . . direct subtraction . . . automatic credit balance . . . chain multiplication . . . negative multiplication, plus percentage division.

The Total Transfer feature lets you multiply a total arrived at by addition, subtraction, or previous multiplication without having to re-enter that total into the keyboard.

In multiplying a single amount repeatedly, merely set the Mult-O-Matic Constant Lever. Amount being multiplied automatically re-prints on tape ready for you to multiply it again by another amount.

And the Mult-O-Matic offers all the famous Victor Select-O-Matic Custom features too. Here indeed is the one figuring machine for all your business needs!

SPECIAL MULT-O-MATIC CALCULATOR MODEL 72-85-54

This Special model has all the features of the Deluxe Mult-O-Matic calculator except for Automatic Constant multiplication and the Total Transfer feature.

Q U A L I T Y S I N C E 1 9 1 8

VICTOR ADDING MACHINES

MODEL 74-85-54

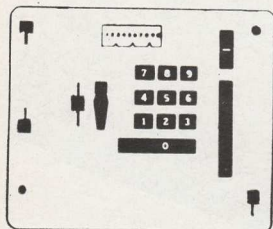
VICTOR 10-KEY KEYBOARD Mult-O-Matic FIGURING MACHINE

*Electrically Operated
Automatic Multiplication • Total Transfer Feature
Constant Multiplying • Select-O-Matic Totaling*

Capacity, Listing 99,999,999.99
Capacity, Totaling 999,999,999.99

SAMPLE

KEYBOARD



TAPE

	.00 T
x	1.71
x	.12
x	20.52 T
x	1.71
x	.16
x	27.36 T
x	1.71
x	.23
x	39.33 T

Size—9½" x 13¾"; **Height**—7¾"; **Weight**—Approx. 23 lbs.

Two-Tone Metal Case—sand tone and brown; completely encloses all working parts and paper roll.

Finger Tip Control—all operation done on one "feather touch" keyboard. Figure keys spaced ¾" from center to center make for greatest operating ease, give fast and lively action.

Cushioned Keys—protect key stems and internal mechanism.

Faster Operation—only Victor Mult-O-Matic permits you to write answers while machine is figuring . . . only Mult-O-Matic solves problems faster by skipping cycling of ciphers when multiplicand contains ciphers.

Electrified Dual Non-Add-Repeat Key—located within fingertip reach of the 10-Key keyboard.

Select-O-Matic Totaling—permits automatic totaling or sub-totaling from add bar.

Printing Press Action—eliminates parts, insures uniform print.

Plainly Marked Symbols—"T" prints for total; "S" for sub-total; "N" for Non-Add; "-" for subtract; "X" for multiply; "TC" and "SC" for Credit Balance.

Safety Switch—breaks circuit when hood is up.

Q U A L I T Y S I N C E 1 9 1 8

VICTOR ADDING MACHINES



**10-KEY KEYBOARD
PREMIER LINE
MODEL 71-85-54**

Electrically Operated

*Direct Subtraction • Automatic Credit Balance
One-Touch Automatic Add-Bar Totaling
Two Color Ribbon*

Adding, subtracting, multiplying, dividing, listing and figuring credit balance are done faster on the Premier . . . all control and figure keys are within hand-span on the speed-designed keyboard. Electrified add, subtract, total, non-add and correction controls eliminate time-consuming extra strokes.

Totals and sub-totals register automatically—with "one-touch" split add-total—add-sub-total bars. All subtract figures and negative answers (credit balance) are printed in red on the tape. All entries, except addition, are clearly indicated by true symbols. Figure keys with multi-formed contours make touch-system operation positive.

A variety of models with same features also available in various listing and totaling capacities and in hand operated models.

VICTOR ADDING MACHINES

MODEL 71-85-54

PREMIER 10-KEY KEYBOARD

Electrically Operated

Direct Subtraction • Automatic Credit Balance

One-Touch Automatic Add-Bar Totaling

Two Color Ribbon

Capacity, Listing 99,999,999.99 (10 Columns)

Capacity, Totaling 999,999,999.99 (11 Columns)

SAMPLE TAPE

	.00 T
35,155,467.75	
43,962,547.00	
12,435,872.45	
91,466,382.45	
183,020,269.70 T	
5,546.05 N	
4,500.00	
7,545.00 —	
3,045.00 SC	
500.00 —	
3,545.00 TC	

Prints Subtract Figures
and Negative Answers
(Credit Balance) In Red
on the Tape.

Desk Size—15"x10" (maximum height 8¼").

Weight—Approximately 22 lbs.

Two-Tone Metal Case—sand tone and brown; completely encloses all working parts and paper roll.

"One-Touch" Add-Total Bar—all addition entries are automatically accumulated in the machine and printed on your tape by a touch of the ADD-TOTAL Motor Bar . . . PLUS—one touch of the bar and you get an automatic total. (Same for Sub-Total Bar.)

Fast Operation—180 strokes per minute.

"Protecto-Cover" Hood—convenient hinged hood provides easy access to ribbon and paper roll. Safety switch breaks circuit when hood is raised.

Paper Space Control Lever—under the hood lever allows you to set vertical space tape to single or double spacing.

Feather Touch Keyboard - Natural Reading Angle (26°) -

Decimal Indicator - Column Indicator - Twirler Knob - Paper

Release Lever - Automatic Space Up - True Printed Symbols

- Automatic Punctuation - Simple Ribbon Mechanism - Vic-

tor's Superior Printing Press Action - Case-Hardened Friction

Parts - Cadmium Plated Parts - Cushioned Keys

VICTOR ADDING MACHINES



FULL KEYBOARD

PREMIER LINE

MODEL 61-85-54

Electrically Operated

Direct Subtraction • Automatic Credit Balance

One-Touch Automatic Add-Bar Totaling

Two Color Ribbon

Automatic "one-touch" controls and versatile full keyboard make the Premier one of the simplest to operate adding-subtracting machines. Adding, subtracting, multiplying, dividing, listing and computing credit balance are done smoothly and quickly . . . even by inexperienced operators. Totals and sub-totals register automatically — with "one-touch" add-total and add-sub-total bars. All subtract figures and negative answers (credit balance) are printed in red. Dramatically-styled and supremely-engineered, the Premier combines quality and performance.

A variety of models with the same features also available in various listing and totaling capacities and in hand operated models.

Q U A L I T Y S I N C E 1 9 1 8

VICTOR ADDING MACHINES

MODEL 61-85-54

PREMIER FULL KEYBOARD

Electrically Operated

Direct Subtraction • Automatic Credit Balance

One-Touch Automatic Add-Bar Totaling

Two Color Ribbon

Capacity, Listing 99,999,999.99 (10 Columns)
Capacity, Totaling 999,999,999.99 (11 Columns)

SAMPLE TAPE

	.00 T
35,155,467.75	
43,962,547.00	
12,435,872.45	
91,466,382.45	
183,020,269.70 T	
5,546.05 N	
4,500.00	
7,545.00 —	
3,045.00 SC	
500.00 —	
3,545.00 TC	

Prints Subtract Figures
and Negative Answers
(Credit Balance) In Red
on the Tape.

Desk Size—15"x10" (maximum height 8¼").

Weight—Approximately 22 lbs.

Two-Tone Metal Case—sand tone and brown; completely encloses all working parts and paper roll.

"One-Touch" Add-Total Bar—all addition entries are automatically accumulated in the machine and printed on your tape by a touch of the ADD-TOTAL Motor Bar . . . PLUS —one touch of the bar and you get an automatic total. (Same for Sub-Total Bar.)

Fast Operation—180 strokes per minute.

"Protecto-Cover" Hood—convenient hinged hood provides easy access to ribbon and paper roll. Safety switch breaks circuit when hood is raised.

Paper Space Control Lever—under the hood lever allows you to set vertical space tape to single or double spacing.

Feather Touch Keyboard - Natural Reading Angle (26°) -
Decimal Indicator - Twirler Knob - Paper Release Lever -
Automatic Space-Up - True Printed Symbols - Automatic
Punctuation - Simple Ribbon Mechanism - Victor's Superior
Printing Press Action - Case-Hardened Friction Parts - Cad-
mium Plated Parts - Cushioned Keys

Q U A L I T Y S I N C E 1 9 1 8

VICTOR ADDING MACHINES



10-KEY KEYBOARD

CUSTOM LINE

MODEL 70-85-54

Electrically Operated

Direct Subtraction • Automatic Credit Balance

Select-O-Matic Totaling

Now with the Select-o-matic custom you can take both totals and sub-totals . . . from the dual total key . . . or from the add-bar automatically . . . or interchange both methods. Select-o-matic permits "touch system" totaling . . . reduces hand traveling . . . increases operating speed.

Here is the same smartly designed, ruggedly built custom machine with the revolutionary Select-o-matic totaling feature added.

A variety of models with same features also available in various listing and totaling capacities and in hand operated models.

Q U A L I T Y S I N C E 1 9 1 8

VICTOR ADDING MACHINES

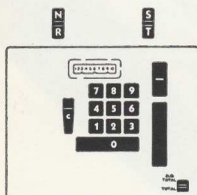
MODEL 70-85-54 CUSTOM 10-KEY KEYBOARD

Electrically Operated
Direct Subtraction • Automatic Credit Balance

Capacity, Listing 99,999,999.99 (10 Columns)
Capacity, Totaling 999,999,999.99 (11 Columns)

SAMPLE

KEYBOARD



TAPE

	00T
35,155,467.75	
43,962,547.00	
12,435,872.50	
91,466,382.45	
183,020,269.70T	
	5,546.75N
	4,500.00
	7,545.00—
	3,045.00SC
	500.00—
	3,545.00TC

Desk Size—9½" x 13¾".

Maximum Height Above Desk—7¼".

Weight—19½ lbs., approximately.

Two-Tone Metal Case—gray and green; completely encloses all working parts and paper roll.

Select-o-matic Totaling—permits automatic totaling or sub-totaling from add bar as well as from dual total key.

Direct Subtraction—with convenient motor bar operation.

Automatic Credit Balance—one operation only . . . no extra key.

Figure Keys—spaced ¾" center to center.

Fast Operation—180 machine operations per minute.

Extra Wide Cipher Bar—for speedier touch operation.

Non Add Key—convenient for tabbing invoice, page or other identifying numbers on tape.

"Live" Duo-Controls—all feature or control keys (except the Repeat Key) are "live" keys . . . that is, they are directly connected to the motor.

Twirl Knob—moves tape up or down.

Safety Switch—breaks circuit when "Protecto-cover" hood is up.

VICTOR ADDING MACHINES



FULL KEYBOARD
CUSTOM LINE
MODEL 60-85-54

*Electrically Operated
Direct Subtraction • Automatic Credit Balance
Select-O-Matic Totaling*

Now with the Select-o-matic custom you can take both totals and sub-totals . . . from the dual total key . . . or from the add-bar automatically . . . or interchange both methods. Select-o-matic permits "touch system" totaling . . . reduces hand traveling . . . increases operating speed.

Here is the same smartly designed, ruggedly built custom machine with the revolutionary Select-o-matic totaling feature added.

A variety of models with same features also available in various listing and totaling capacities and in hand operated models.

VICTOR ADDING MACHINES

MODEL 60-85-54 CUSTOM FULL KEYBOARD

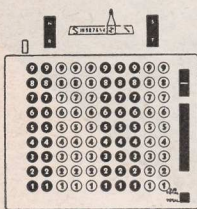
Electrically Operated

Direct Subtraction • Automatic Credit Balance

Capacity, Listing 99,999,999.99 (10 Columns)
Capacity, Totaling 999,999,999.99 (11 Columns)

SAMPLE

KEYBOARD



TAPE

	00T
35,155,467.75	
43,962,547.00	
12,435,872.50	
91,466,382.45	
183,020,269.70T	
	5,546.75N
	4,500.00
	7,545.00—
	3,045.00SC
	500.00—
	3,545.00TC

Desk Size—9½"x13¾".

Maximum Height Above Desk—7¼".

Weight—approximately 20 lbs.

Select-o-matic Totaling—permits automatic totaling or sub-totaling from add bar as well as from dual total key.

Direct Subtraction—with convenient motor bar operation.

Automatic Credit Balance—one operation only . . . no extra key.

Fast Operation—180 machine operations per minute.

Two-Tone Metal Case—gray and green; completely encloses all working parts and paper roll.

Non Add Key—convenient for tabbing invoice, page or other identifying numbers on tape.

"Live" Duo-Controls—all feature or control keys (except the Repeat Key) are "live" keys . . . that is, they are directly connected to the motor.

Twirl Knob—moves tape up or down.

Safety Switch—breaks circuit when "Protecto-cover" hood is up.

Ciphers Print Automatically—no keys to depress.

Q U A L I T Y S I N C E 1 9 1 8

VICTOR ADDING MACHINES



CUSTOM LINE

10 KEY SERIAL ENTRY DIGIT-MATICS

With Electrically Actuated Keys

High speed entry and versatility are the outstanding features of these 10 key serial entry Digit-Matics. They are basic adding, multiplying or calculating machines equipped with 10 electrically actuated keys having numeric keys 0-9. Figures are introduced into the machines electrically at high speeds—and without the need of an operator. They are built for use with many automated office and production machines such as: punched tape recorders and readers, punched tape typewriters, electronic counters, computers, time interval meters, nuclear scalars, etc. Digit-matics are equipped with Credit Balance when specified.

VICTOR SERIAL ENTRY 10 KEY DIGIT-MATICS

Electrically Operated

With Electrically Actuated Keys

FOUR BASIC MODELS

DIGIT-MATIC LISTER—Straight lister. Up to 20 digits per second plus 0.25 seconds per printing line. Available in 7, 8, 10 and 11 column capacity. Special decimal punctuation available at no additional cost. 9½" wide, 7¼" high, and 14¾" long.

DIGIT-MATIC ACCUMULATOR—Will print and accumulate. Can add, subtract, total or sub-total. Prints up to 20 digits per second plus an additional 0.3 seconds per print or total line. Available in 7, 8, 10 and 11 column capacity. Can be attached to Flexowriter typewriters and punched tape units to accumulate amounts simultaneously. Special punctuation is available at no extra cost. 9½" wide, 7¼" high and 14¾" long. 23 lbs.

DIGIT-MATIC MULTIPLIER—Is a basic Mult-O-Matic multiplier with Digit-Matic unit to electrically actuate keys without using an operator. For details on machine operation see the Mult-O-Matic Model 74-85-54

DIGIT-MATIC CALCULATOR—Is basic Automatic Printing Calculator with all its features plus Digit-Matic unit to electrically actuate keys without using an operator. For details on machine operation see the Automatic Printing Calculator Model 75-85-54

GENERAL SPECIFICATIONS

Aluminum die cast case.

All parts cadmium plated to resist rust.

Numbers enter machines serially with most significant figure first.

Numbers are printed a line at a time by actuation of the plus or minus motor bar solenoid.

Motor operated on 115 volt a.c. 60 watts or d.c. 80 watts.

VICTOR ADDING MACHINES



PREMIER LINE

10 KEY SERIAL ENTRY DIGIT-MATICS

With Electrically Actuated Keys

High speed entry and versatility are the outstanding features of these 10 key serial entry Digit-Matics. They are basic adding, multiplying or calculating machines equipped with 10 electrically actuated keys having numeric keys 0-9. Figures are introduced into the machines electrically at high speeds—and without the need of an operator. They are built for use with many automated office and production machines such as: punched tape recorders and readers, punched tape typewriters, electronic counters, computers, time interval meters, nuclear scalars, etc. Digit-matics are equipped with Credit Balance when specified.

(Ptd. 6-61)

Q U A L I T Y S I N C E 1 9 1 8

VICTOR ADDING MACHINES

VICTOR SERIAL ENTRY 10 KEY DIGIT-MATICS

Electrically Operated

With Electrically Actuated Keys

FOUR BASIC MODELS

DIGIT-MATIC LISTER — Straight lister. Indexing rate up to 20 digits per second plus 0.35 seconds per printing line. Available in 8, 9, 10, and 11 column capacity. Special decimal punctuation available at no additional cost. 10 $\frac{1}{8}$ " wide, 8-5/32" high, and 15-1/32" long.

DIGIT-MATIC ACCUMULATOR — Will print and accumulate. Can add, subtract, total or sub-total. Index up to 20 digits per second plus an additional 0.35 seconds per print or total line. Available in 7, 8, 10, and 11 column capacity. Can be attached to Flexowriter typewriters and punched tape units to accumulate amounts simultaneously. Special punctuation is available at no extra cost. 10 $\frac{1}{8}$ " wide, 8-5/32" high and 15-1/32" long. 23 lbs.

***DIGIT-MATIC MULTIPLIER** — Is a basic Mult-O-Matic multiplier with Digit-Matic unit to electrically actuate keys without using an operator. For details on machine operation see the Mult-O-Matic Model 74-85-54.

***DIGIT-MATIC CALCULATOR** — Is basic Automatic Printing Calculator with all its features plus Digit-Matic unit to electrically actuate keys without using an operator. For details on machine operation see the Automatic Printing Calculator Model 75-85-54.

*CUSTOM LINE

GENERAL SPECIFICATIONS

Aluminum die cast case.

All parts cadmium plated to resist rust.

Two color ribbon.

Numbers enter machines serially with most significant figure first.

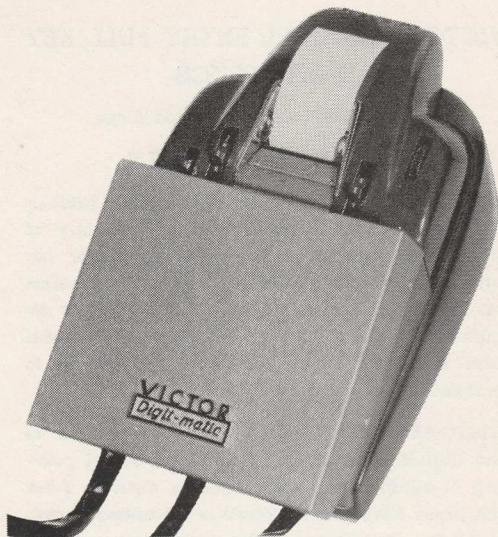
Numbers are printed a line at a time by actuation of the plus or minus motor bar solenoid.

Motor operated on 115 volt A.C. 60 watts or D.C. 80 watts.

(Other motor types available upon request.)

(Ptd. 6-61)

Q U A L I T Y S I N C E 1 9 1 8



CUSTOM LINE FULL KEY PARALLEL ENTRY DIGIT-MATICS

With Electrically Actuated Keys

The full key parallel entry Victor Digit-Matics are basic full key adding machines equipped with electrically actuated keys to permit high speed entry of figures into the machines without the need of an operator. All columns are equipped with a set of 1 through 9 keys, each of which has a solenoid for its electrical actuation. Zeros are printed automatically without using zero keys. The full key parallel entry machines accept all key depressions and the motor bar print simultaneously. Because of this, very high speeds of up to 185 lines per minute are possible. The Digit-Matics are for use with many automated office and production machines. Digit-Matics are equipped with Credit Balance when specified.

VICTOR PARALLEL ENTRY FULL KEY DIGIT-MATICS

With Electrically Actuated Keys

TWO BASIC MODELS

DIGIT-MATIC LISTER—For use where printing only is required. Ideal for high speed entry of printed material, since all keys and motor bar are operated simultaneously. Victor application engineers will analyze Customer's Digit-Matic requirements and recommend the Digit-Matic model best suited for each application. (No charge to customer.)

DIGIT-MATIC ACCUMULATOR—This version of the Digit-Matic is for use when high speed printing of addition and subtraction is desired. After the digits have been entered as described above, a single depression of the motor bar solenoid without a numerical entry subsequent to the last line printing will cause the accumulating Digit-Matic to print the total and clear the accumulator to zero. Sub-total operation permits modification so that the sub-total is printed without clearing the accumulator. Credit Balance is available on Digit-Matics when specified.

GENERAL SPECIFICATIONS—Full set of 1 through 9 keys in each column. Solenoid for each key and motor bar. Zeros print automatically without using zero keys. Many special modifications can be made to fit individual customer needs. 7½" high, 9½" x 15¾" long. Weight approximately 30 pounds.

VICTOR ADDING MACHINES



PREMIER LINE FULL KEY PARALLEL ENTRY DIGIT-MATICS

With Electrically Actuated Keys

The full key parallel Victor Digit-Matics are basic full key adding machines equipped with electrically actuated keys to permit high speed entry of figures into the machines without the need of an operator. All columns are equipped with a set of 1 through 9 keys, each of which has a solenoid for its electrical actuation. Zeros are printed automatically without using zero keys. The full key parallel entry machines accept all key depressions and the motor bar print simultaneously. Because of this, high speeds of up to 180 lines per minute are possible on accumulator models and up to 240 l.p.m. on listers (non-accumulative). The Digit-Matics compliment a variety of automated office and production machines. Digit-Matics are equipped with Credit Balance when specified.

(Ptd. 6-61)

Q U A L I T Y S I N C E 1 9 1 8

VICTOR PARALLEL ENTRY FULL KEY DIGIT-MATICS

With Electrically Actuated Keys

TWO BASIC MODELS

DIGIT-MATIC LISTER — For use where printing only is required. Ideal for high speed 4 lines per second entry of printed material, since all keys and motor bar are operated simultaneously. Victor application engineers will analyze Customer's Digit-Matic requirements and recommend the Digit-Matic model best suited for each application. (No charge to customer.)

DIGIT-MATIC ACCUMULATOR—This version of the Digit-Matic is for use when high speed 3 lines per second printing of addition and subtraction is desired. After the digits have been entered as described above, a single depression of the motor bar solenoid without a numerical entry subsequent to the last line printing will cause the accumulating Digit-Matic to print the total and clear the accumulator to zero. Sub-total operation permits modification so that the sub-total is printed without clearing the accumulator. Credit Balance is available on Digit-Matics when specified.

GENERAL SPECIFICATIONS—Full set of 1 through 9 keys in each column. Solenoid for each key and motor bar. Zeros print automatically without using zero keys. Many special modifications can be made to fit individual customer needs. 8-5/32" high, 10 1/8" x 16-1/16" long. Weight approximately 30 pounds.

(Ptd. 6-61)

VICTOR ADDING MACHINES



MODEL 60-60-54-192

MARK-O-MATIC PRINTER

*For All Types of Labeling, Coding and Identifying
Electrically Operated Completely Automatic*

COMPACT-PORTABLE Two-tone case, gray and green. All working parts completely enclosed.

AUTOMATIC LOCK LEVER Locks machine in automatic operation for printing large quantities of labels.

VEEDER ROOT COUNTER Provides a visual record of total labels or tags printed during each run.

PIN/STRING TAG CHUTE Fastens on hood allowing heavy stock tickets and tags to clear platen and carriage.

KEY RELEASE LEVER Instantly clears keyboard.

The Mark-O-Matic is available in 7 column, 8 column and 10 column full keyboard custom units. The model illustrated is the full 10 column machine. Mark-O-Matics are completely customized to fit customers needs. They are used mainly for price marking and identification. Fifteen cost codes are available to incorporate into the machine. Many adding machine features may be used in conjunction with Mark-O-Matic. Unit prints 100 labels in 41 seconds. Time and labor saved quickly pay for machine. Simplicity and speed of keyboard and entry are high selling points.

Q U A L I T Y S I N C E 1 9 1 8

VICTOR ADDING MACHINES

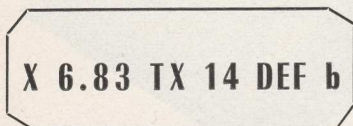
MODEL 60-60-54-192

VICTOR MARK-O-MATIC PRINTER

SAMPLES—Three Basic Types of Labels

Standard Sizes Shown

LABEL ENTRIES—Left to right: X—tax exempt items (col. 11); \$6.83—retail price (cols. 10, 9, & 8); TX—special identification keys, in this case tax (col. 7 only); 14—special information keys, here it shows 14c tax (cols. 6 & 5); DEF—cost code entry, cost here \$4.56 (cols. 4, 3, & 2); b—indicates in which quarter of the year merchandise was marked (col. 1). Year may be indicated by color of ribbon used.

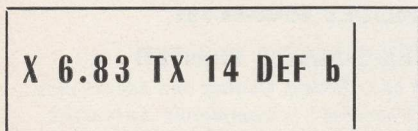


GUMMED

LABELS

11 Column Cap.

Entire width may be used for listings.

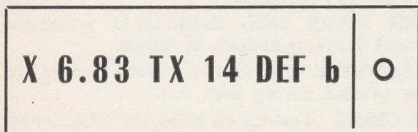


PIN

TICKETS

11 Column Cap.

Only section indicated may be used for listings.



STRING

TAGS

11 Column Cap.

Only section indicated may be used for listings.

VARIATIONS POSSIBLE Adjustable label guide in the machine can vary width of labels from standard width of 1 $\frac{3}{4}$ " (11 col.) to 1 $\frac{1}{4}$ " (7 col.) or $\frac{3}{4}$ " (4 col.). Optional—Height may be varied at extra cost. Standard height is 2/3" (4 spaces). May be increased any number of spaces up to a maximum of 9 spaces, which would print a label 1 $\frac{1}{2}$ " high.

VICTOR ADDING MACHINES



10-KEY KEYBOARD
IMPERIAL LINE
MODEL 17-83-54

Electrically Operated

Direct Subtraction - Automatic Credit Balance

The Victor Imperial 10-Key adding machine sets a new standard of excellence in performance and style. This new Imperial model features a compact, 10-key keyboard with finger-tip control keys for the ultimate in ease of operation. Beautifully designed, executed in tasteful sand tone and brown, the precision-built Imperial is the ideal adding machine for all your important figure work.

Also available in Model 17-58-54 — Direct Subtractor.

VICTOR ADDING MACHINES

10-KEY KEYBOARD

IMPERIAL LINE

Electrically Operated

MODEL 17-83-54—With Automatic Credit Balance

MODEL 17-58-54—Direct Subtractor

Capacity, Listing	999,999.99
Capacity, Totaling	9,999,999.99

SAMPLE TAPE—MODEL 17-83-54

```
          . 0 0 T
          1 2 . 3 4 N
    9 8 7 , 6 5 4 . 3 2
          3 , 5 7 9 . 8 6
          3 4 . 5 0
    9 9 1 , 2 6 8 . 6 8 S

          4 5 0 . 7 1
    7 0 4 , 0 6 0 . 2 0
    1 , 6 9 5 , 7 7 9 . 5 9 T

          4 , 5 0 0 . 0 0
          5 , 7 0 0 . 0 0 —
          1 , 2 0 0 . 0 0 S C

          5 0 0 . 0 0 —
    1 , 7 0 0 . 0 0 T C
```

Desk Size—13½" x 8" x 7" high.

Weight—Approximately 18 lbs.

Two-Tone Metal Case—Sand tone and brown.

Finger-Tip Action—No wasted effort.

Plainly Marked Symbols on Detail Strip.

Multiplication Control—Repeat key holds item in machine.

Automatic Punctuation—Decimal point and commas print automatically.

All Parts Cadmium Plated—Protection against rust.

Printing Press Action—Insures uniform print.

10 Keys—For speedy touch system operation.

Q U A L I T Y S I N C E 1 9 1 8

VICTOR ADDING MACHINES



10-KEY KEYBOARD
IMPERIAL LINE
MODEL 17-83-4

Manually Operated

Direct Subtraction - Automatic Credit Balance

The Victor Imperial 10-Key adding machine sets a new standard of excellence in performance and style. This budget-priced, hand-operated model features a compact, 10-key keyboard with fingertip control keys for the ultimate in ease of operation. Beautifully designed, executed in tasteful sand tone and brown, the precision-built Imperial is the ideal adding machine for all your important figure work.

Also available in Model 17-58-4 — Direct Subtractor.

Q U A L I T Y S I N C E 1 9 1 8

VICTOR ADDING MACHINES

10-KEY KEYBOARD IMPERIAL LINE

Manually Operated

MODEL 17-83-4—With Automatic Credit Balance

MODEL 17-58-4—Direct Subtractor

Capacity, Listing 999,999.99
Capacity, Totaling 9,999,999.99

SAMPLE TAPE—MODEL 17-83-4

	. 0 0 T
	1 2 . 3 4 N
9 8 7 , 6 5 4 . 3 2	
3 , 5 7 9 . 8 6	
3 4 . 5 0	
9 9 1 , 2 6 8 . 6 8 S	
	4 5 0 . 7 1
7 0 4 , 0 6 0 . 2 0	
1 , 6 9 5 , 7 7 9 . 5 9 T	
	4 , 5 0 0 . 0 0
	5 , 7 0 0 . 0 0 —
	1 , 2 0 0 . 0 0 S C
	5 0 0 . 0 0 —
	1 , 7 0 0 . 0 0 T C

Desk Size—13½" x 8" x 7" high.

Weight—Approximately 15½ lbs.

Two-Tone Metal Case—Sand tone and brown.

Finger-Tip Action—No wasted effort.

Plainly Marked Symbols on Detail Strip.

Multiplication Control—Repeat key holds item in machine.

Automatic Punctuation—Decimal point and commas print automatically.

All Parts Cadmium Plated—Protection against rust.

Printing Press Action—Insures uniform print.

10 Keys—For speedy touch system operation.

Q U A L I T Y S I N C E 1 9 1 8



FULL KEYBOARD
IMPERIAL LINE
MODEL 16-83-54

Electrically Operated

Direct Subtraction - Automatic Credit Balance

This versatile, completely new Victor Imperial adding machine offers countless time saving advantages. The exclusive "live" controls make figure work easier and faster. The large capacity for listing and totaling makes this the ideal machine for all your important figure work. Modern design, tasteful two-tone metal case in sand tone and brown—the Imperial full keyboard model is a precision figuring machine for every business use.

Also available in Model 16-58-54 — Direct Subtractor.

VICTOR ADDING MACHINES

FULL KEYBOARD IMPERIAL LINE

Electrically Operated

MODEL 16-83-54—With Automatic Credit Balance

MODEL 16-58-54—Direct Subtractor

Capacity, Listing 999,999.99
Capacity, Totaling 9,999,999.99

SAMPLE TAPE—MODEL 16-83-54

	. 0 0 T
	1 2 . 3 4 N
9 8 7 , 6 5 4 . 3 2	
3 , 5 7 9 . 8 6	
3 4 . 5 0	
9 9 1 , 2 6 8 . 6 8 S	
	4 5 0 . 7 1
7 0 4 , 0 6 0 . 2 0	
1 , 6 9 5 , 7 7 9 . 5 9 T	
	4 , 5 0 0 . 0 0
	5 , 7 0 0 . 0 0 —
	1 , 2 0 0 . 0 0 S C
	5 0 0 . 0 0 —
	1 , 7 0 0 . 0 0 T C

Desk Size—13½" x 8" x 7" high.

Weight—Approximately 18 lbs.

Two-Tone Metal Case—Sand tone and brown.

Finger-Tip Action—No wasted effort.

Plainly Marked Symbols on Detail Strip.

Multiplication Control—Repeat key holds item in machine.

Automatic Punctuation—Decimal point and commas print automatically.

All Parts Cadmium Plated—Protection against rust.

Printing Press Action—Insures uniform print.

Full Keyboard—Ledger ruled.

Q U A L I T Y S I N C E 1 9 1 8

VICTOR ADDING MACHINES



**FULL KEYBOARD
IMPERIAL LINE
MODEL 16-83-4**

Manually Operated

Direct Subtraction - Automatic Credit Balance

This versatile, completely new Victor Imperial adding machine offers countless time saving advantages. The hand-operated model is budget-priced, yet fully-featured. Large capacity for listing and totaling makes this the ideal machine for all your important figure work. Modern design, tasteful two-tone metal case in sand tone and brown—the Imperial full keyboard model is a precision figuring machine for every business use.

Also available in Model 16-58-4 — Direct Subtractor.

FULL KEYBOARD IMPERIAL LINE

Manually Operated

MODEL 16-83-4—With Automatic Credit Balance

MODEL 16-58-4—Direct Subtractor

Capacity, Listing 999,999.99
Capacity, Totaling 9,999,999.99

SAMPLE TAPE—MODEL 16-83-4

					. 0 0 T
				1 2 . 3 4 N	
9 8 7 ,	6 5 4 .	3 2			
	3 ,	5 7 9 .	8 6		
		3 4 .	5 0		
9 9 1 ,	2 6 8 .	6 8 8	S		
		4 5 0 .	7 1		
7 0 4 ,	0 6 0 .	2 0			
1 ,	6 9 5 ,	7 7 9 .	5 9 T		
	4 ,	5 0 0 .	0 0		
	5 ,	7 0 0 .	0 0 —		
	1 ,	2 0 0 .	0 0 S C		
		5 0 0 .	0 0 —		
	1 ,	7 0 0 .	0 0 T C		

Desk Size—13½" x 8" x 7" high.

Weight—Approximately 15½ lbs.

Two-Tone Metal Case—Sand tone and brown.

Finger-Tip Action—No wasted effort.

Plainly Marked Symbols on Detail Strip.

Multiplication Control—Repeat key holds item in machine.

Automatic Punctuation—Decimal point and commas print automatically.

All Parts Cadmium Plated—Protection against rust.

Printing Press Action—Insures uniform print.

Full Keyboard—Ledger ruled.

VICTOR ADDING MACHINES



10-KEY ELECTRIC CHAMPION SUBTRACTORS

Electrically Operated

With Automatic Credit Balance

A truly versatile figuring machine.

Addition, direct subtraction, and completely automatic credit balance embodied in a small, precision built, lightweight electric machine.

Whenever "negative totals" are required, this Victor model provides them quickly, accurately, and easily . . . there are no extra operations needed. One operation of the "total" key and the right answer is printed immediately.

This 10-key keyboard model is ideally suited to those operators using the touch system.

(Ptd. 6-61)

Q U A L I T Y S I N C E 1 9 1 8

VICTOR ADDING MACHINES

VICTOR CHAMPION 10-KEY SUBTRACTORS

*Electrically Operated
With Automatic Credit Balance
Direct Subtraction*

MODEL	LISTING	TOTALING
7-83-54	999,999.99	9,999,999.99

SAMPLE TAPE

ELECTRICALLY OPERATED
DIRECT SUBTRACTORS

MODEL 7-58-54

Listing	999,999.99
Totaling	9,999,999.99

MODEL 7-57-54

Listing	99,999.99
Totaling	999,999.99

.00T
987,654.32
3,579.86
34.50
991,268.68S
450.71
704,060.20
1,695,779.59T
4,500.00
5,700.00—
1,200.00SC
500.00—
1,700.00TC

Desk Size—12¾" x 7½".

Maximum Height—7".

Weight—Approximately 14 lbs.

High Impact Plastic Case—Streamlined, protective, handsome.

10 Keys—For speedy touch system operation.

Natural Reading Angle—24 degree keyboard slant, easy to read.

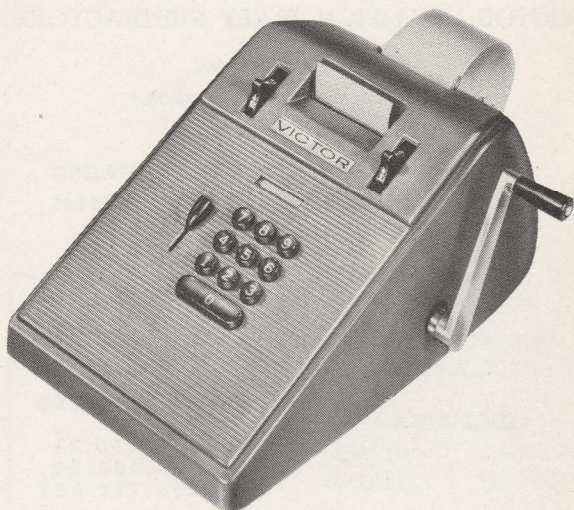
Automatic Credit Balance—One operation only, no need for extra keys.

Multiplication Control—repeat key holds item in machine.

(Ptd. 6-61)

Q U A L I T Y S I N C E 1 9 1 8

VICTOR ADDING MACHINES



10-KEY MANUAL CHAMPION SUBTRACTOR

*Manually Operated
With Automatic Credit Balance*

An all-purpose adding machine with speedy, compact 10-key keyboard for adding, subtracting, listing and multiplying. This lightweight, precision built portable machine embodies automatic credit balance.

Whenever negative totals are required, this Victor provides them quickly. There are no extra operations needed. One operation of the total key and the right answer is printed immediately.

(Ptd. 6-61)

Q U A L I T Y S I N C E 1 9 1 8

VICTOR ADDING MACHINES

VICTOR CHAMPION 10-KEY SUBTRACTORS

*Manually Operated
With Automatic Credit Balance
Direct Subtraction*

MODEL	LISTING	TOTALING
7-83-4	999,999.99	9,999,999.99

SAMPLE TAPE

MANUALLY OPERATED
DIRECT SUBTRACTORS

MODEL 7-58-4

Listing	999,999.99
Totaling	9,999,999.99

MODEL 7-57-4

Listing	99,999.99
Totaling	999,999.99

	.00T
987,654.32	
3,579.86	
34.50	
991,268.68S	
	450.71
704,060.20	
1,695,779.59T	
	4,500.00
	5,700.00—
	1,200.00SC
	500.00—
	1,700.00TC

Desk Size—12¾" x 7½".

Maximum Height—7".

Weight—Approximately 11 lbs.

High Impact Plastic Case—Streamlined, protective, handsome.

10 Keys—For speedy touch system operation.

Natural Reading Angle—24 degree keyboard slant, easy to read.

Automatic Credit Balance—One operation only, no need for extra keys.

Multiplication Control—Repeat key holds item in machine.

(Ptd. 6-61)

Q U A L I T Y S I N C E 1 9 1 8



FULL KEYBOARD ELECTRIC CHAMPION SUBTRACTOR

*Electrically Operated
With Automatic Credit Balance*

A truly versatile figuring machine.

Addition, direct subtraction, and completely automatic credit balance embodied in a small, precision built, lightweight electric machine.

Whenever "negative totals" are required this Victor model provides them quickly accurately and easily . . . there are no extra operations needed. One operation of the "total" key and the right answer is printed immediately.

A full keyboard model for those who prefer this type of machine.

(Ptd. 6-61)

VICTOR ADDING MACHINES

VICTOR CHAMPION FULL KEYBOARD SUBTRACTOR

Electrically Operated
With Automatic Credit Balance
Direct Subtraction

MODEL	LISTING	TOTALING
6-83-54	999,999.99	9,999,999.99

SAMPLE TAPE

ELECTRICALLY OPERATED
DIRECT SUBTRACTORS

MODEL 6-58-54

Listing	999,999.99
Totaling	9,999,999.99

MODEL 6-57-54

Listing	99,999.99
Totaling	999,999.99

	.00 T
987,654.32	
3,579.86	
34.50	
991,268.68 S	
	450.71
704,060.20	
1,695,779.59 T	
	4,500.00
	5,700.00 —
	1,200.00 SC
	500.00 —
	1,700.00 TC

Desk Size—12¾" x 7½".

Maximum Height—7".

Weight—Approximately 14 lbs.

High Impact Plastic Case—Streamlined, protective, handsome.

Full Keyboard—Ledger ruled.

Natural Reading Angle—24 degree keyboard slant, easy to read.

Automatic Credit Balance—One operation only, no need for extra keys.

(Ptd. 6-61)

Q U A L I T Y S I N C E 1 9 1 8

VICTOR ADDING MACHINES



FULL KEYBOARD MANUAL CHAMPION SUBTRACTOR

*Manually Operated
With Automatic Credit Balance*

An all-purpose adding machine with ledger ruled full keyboard for adding, subtracting, listing and multiplying. This lightweight, precision built portable machine embodies automatic credit balance.

Whenever negative totals are required, this Victor provides them quickly. There are no extra operations needed. One operation of the total key and the right answer is printed immediately.

(Ptd. 6-61)

Q U A L I T Y S I N C E 1 9 1 8

VICTOR ADDING MACHINES

VICTOR CHAMPION FULL KEYBOARD SUBTRACTOR

*Manually Operated
With Automatic Credit Balance
Direct Subtraction*

MODEL	LISTING	TOTALING
6-83-4	999,999.99	9,999,999.99

SAMPLE TAPE

MANUALLY OPERATED
DIRECT SUBTRACTORS

MODEL 6-58-4

Listing	999,999.99
Totaling	9,999,999.99

MODEL 6-57-4

Listing	99,999.99
Totaling	999,999.99

	.00T
	987,654.32
	3,579.86
	34.50
	991,268.68S
	450.71
	704,060.20
	1,695,779.59T
	4,500.00
	5,700.00—
	1,200.00SC
	500.00—
	1,700.00TC

Desk Size—12¾" x 7½".

Maximum Height—6½".

Weight—Approximately 12 lbs.

Direct Subtraction—Not complimentary subtraction.

Automatic Credit Balance—One operation only . . . no need for extra keys.

Automatic Punctuation—Decimal point and commas print automatically.

One Stroke Total—No extra stroke necessary.

One Hand Finger Tip Control—Keybuttons, handle and control keys located within reach of one hand.

Automatic Space Up—After every total, subtotal and credit balance operation.

(Ptd. 6-61)

Q U A L I T Y S I N C E 1 9 1 8

VICTOR ADDING MACHINES



10-KEY KEYBOARD CHAMPION SUPER ADDER

Here's the businessman's favorite . . . the ever-popular Victor Super-Adder Adding Machine . . . with all the famous Victor quality features. Durable, high impact plastic case in handsome sand tone color . . . automatic punctuation . . . one stroke total . . . feathertouch, finger-tip control of all keys . . . quiet operation . . . automatic space-up . . . rustproof, cadmium plated, case-hardened friction parts . . . rubber feet to prevent "travel." The Victor Super-Adders are so modestly priced, today's modern businessman will want to place one of these versatile machines on every desk.

(Ptd. 6-61)

Q U A L I T Y S I N C E 1 9 1 8

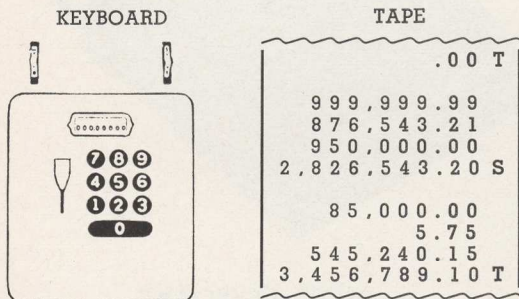
VICTOR ADDING MACHINES

VICTOR 10-KEY SUPER ADDER

Manually Operated

CAPACITIES	7-8-4
Listing	999,999.99
Totaling	9,999,999.99

SAMPLE MODEL 7-8-4



Desk Size—12" x 7½".

Maximum Height—5⅜".

Weight—Approximately 12 lbs.

10-Keys—For speedy touch system operation.

Automatic Punctuation—Decimal points and comma prints automatically.

Automatic Space-Up—After total and subtotal.

High Impact Plastic Case—Modern, protective, long lasting.

Rubber Feet—To prevent desk "travel" and insure quiet operation.

(Ptd. 6-61)

Q U A L I T Y S I N C E 1 9 1 8

VICTOR ADDING MACHINES



FULL KEYBOARD CHAMPION SUPER ADDER

The ever popular Victor Super Adder Adding Machine is the businessman's favorite. The Super Adder is equipped with these Victor quality features . . . durable, high impact plastic case in handsome sand tone color . . . automatic punctuation . . . one stroke total . . . quiet, fast operation . . . automatic spaceup . . . rustproof, cadmium plated, case hardened friction parts . . . rubber feet to prevent "travel." The Victor Super Adders are so modestly priced, today's businessman will want to place one of these versatile machines on every desk.

(Ptd. 6-61)

Q U A L I T Y S I N C E 1 9 1 8

VICTOR ADDING MACHINES

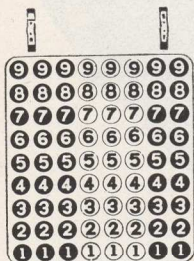
VICTOR SUPER ADDERS

Manually Operated

CAPACITIES	6-8-4
Listing	999,999.99
Totaling	9,999,999.99

SAMPLE MODEL 6-8-4

KEYBOARD



TAPE

	.00 T
999,999.99	
876,543.21	
950,000.00	
2,826,543.20 S	
85,000.00	
5.75	
545,240.15	
3,456,789.10 T	

Desk Size—12" x 7½".

Maximum Height—5¾".

Weight—Approximately 12 lbs.

Automatic Punctuation—Decimal point and commas print automatically.

Automatic Space-Up—After total and subtotal.

High Impact Plastic Case—Modern, protective, long lasting.

Rubber Feet—To prevent desk "travel" and insure quiet operation.

One Stroke Total—No wasted spacing stroke.

Memo Writing Table—For making notes on the tape.

(Ptd. 6-61)

Q U A L I T Y S I N C E 1 9 1 8



VICTOR 500 LINE

FOR OVER three decades, businesses requiring adding machines of large capacities and special features, have found the Victor 5-line machines the right answer. Combining speed, accuracy and durability, these sturdy, precision engineered, heavy duty adding machines give life-time performance and maximum efficiency.



ALL 5-LINE MACHINES HAVE THE FOLLOWING STANDARD FEATURES:

- One Stroke Total**—No wasted spacing stroke before totals.
- Flash Totals in Red**—To catch the eye quickly.
- Triple Visibility**—Dial wheels, keyboard and tape all easily read.
- Full Flexible Keyboard**—Automatic ciphers; ability to depress several keys simultaneously; incorrectly entered item removed and correct item entered in same movement.
- One Hand Control**—Leaving other hand free to turn pages, etc.
- Autographic Writing Table**—Convenient writing of memos, dates, etc.
- Two Platen Twirlers**—For right or left hand.
- Pressure Roll Release**—For easier paper roll insertion and alignment.
- Adjustable Roll Paper Holder**—Handles standard size (2-9/32") and wide size (3-15/32") rolls.
- Narrow Carriage**—Handles forms up to 5¼" wide.
- Nickel Plated Carriage Parts**—Improved appearance, longer life.
- Large, Clear-cut, Legible Type**—For easier reading of printed figures.
- Automatic Punctuation**—Period and commas print automatically.
- Standard Size Ribbon**—Two color, ½" wide, 21' long, same as used on typewriters.
- Standard Control Keys**—Total Key—Subtotal Key—Non-Add Key—Error Key—Repeat Key.
- Standard Vertical Spacing**—Spaces six to the inch, same as typewriter.
- Case Hardened Friction Parts**—To resist wear.
- Sheet Metal Case**—Gray finish.
- One Piece Hardened Steel Type Bars**—For long lived, uniformly even printing.
- Key Spacing**—¾" from center to center.
- Thorough Pre-Test**—"Run-in" at factory to insure perfect operation.
- Cadmium Plated Metal Parts**—To resist rust.

ALL ELECTRICALLY OPERATED MACHINES HAVE THE FOLLOWING ADDITIONAL STANDARD FEATURES

- Universal 115 Volt Motors (Work on AC or DC)**—Operate machine at approximately 128 strokes per minute.
- Sealed-in Power Unit**—Protected from dirt and injury.
- "Live" Control Keys**—Key depression operates motor.
- Simultaneous Key and Motor Bar Depression**—For maximum operating speed.
- Non-Lock, Anti-Jam Controls**—Reduce mechanical difficulties.

VICTOR ADDING MACHINES



MODEL 5-2-1-S-12

LARGE listing and totaling capacity combined with sturdy construction and sound mechanical design make this an ideal machine. Where the work is heavy, where the figures are large and must be handled in the minimum of time, this Victor meets the requirements.

The same machine combined with the Wide Carriage feature, may be obtained in Victor Model 5-2-5-S-12.



VICTOR ADDING MACHINES

MODEL 5-2-1-S-12

VICTOR ADDING MACHINE

Electrically Operated

Capacity, Listing 99,999,999.99

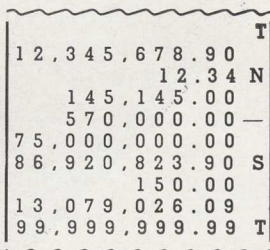
Capacity, Totaling 99,999,999.99

SAMPLE

KEYBOARD



TAPE



MODEL 5-1-1-S-12

VICTOR ADDING MACHINE

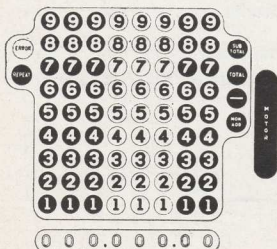
Electrically Operated

Capacity, Listing 999,999.99

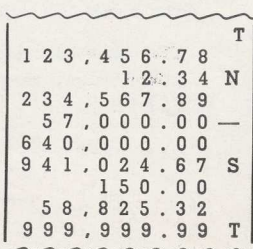
Capacity, Totaling 999,999.99

SAMPLE

KEYBOARD



TAPE



VICTOR ADDING MACHINES



MODEL 5-2-1-S

MANUALLY operated but with large capacity (lists and totals up to one hundred million dollars). This Victor, equipped with direct subtraction, combines long life with accuracy and speed.

The same machine combined with the Wide Carriage feature may be obtained in Victor Model 5-2-5-S.

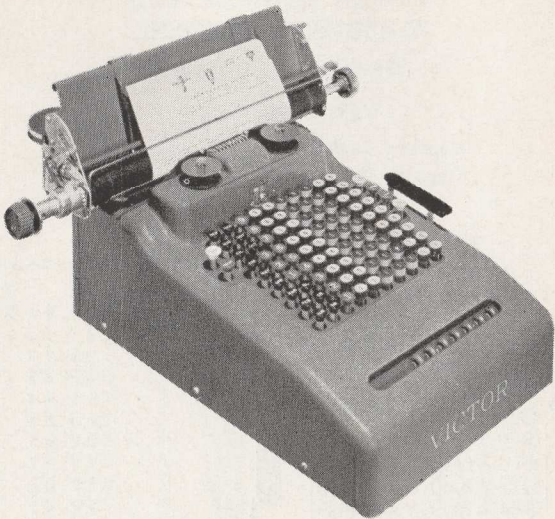
Machines have the following features:

One Stroke Total
Flash Totals in Red
Triple Visibility
Full Flexible Keyboard
One Hand Control
Autographic Writing Table
Two Platen Twirlers
Pressure Roll Release
Adjustable Roll Paper Holder
Narrow Carriage
Nickel Plated Carriage Parts
Large, Clear-cut, Legible Type
Automatic Punctuation
Standard Size Ribbon

Standard Control Keys:

Total Key
Subtotal Key
Subtract Key
Non-Add Key
Error Key
Repeat Key
Standard 6 to the inch Vertical Spacing
Oversize Parts
Cadmium Plated Metal Parts
Case Hardened Friction Parts
Sheet Metal Case
One Piece Hardened Steel Type Bars
 $\frac{3}{4}$ " Key Spacing
Thorough Pre-Test

Q U A L I T Y S I N C E 1 9 1 8



POSTING AND STATEMENT MACHINE

AN ALL-PURPOSE Desk Model Adding and Bookkeeping Machine. Low in price, convenient and fast in operation, its broad range of uses makes this the ideal machine for the average business. It handles all general adding, subtracting, multiplying and miscellaneous office computing, posts Accounts Receivable and Accounts Payable, and even does General Ledger work if desired. It is unexcelled for Open Item Statement work and is equally well adapted to Fold-over Statement work where the carbon copy is used for the ledger. Available with and without semi-automatic carriage.

VICTOR ADDING MACHINES

VICTOR POSTING AND STATEMENT MACHINE

Electrically Operated

Direct Subtraction

Capacity, Listing 99,999.99
Capacity, Totaling 99,999.99

SAMPLE

KEYBOARD



TAPE

			T
	DR	98,765.43	N
JAN	1	111.11	
FEB	2	222.22	
MAR	3	333.33	
APR	4	444.44	
MAY	5	555.55	
JUN	6	666.66	
JUL	7	777.77	
AUG	8	888.88	
SEP	9	999.99	
OCT	10	1,234.56	
NOV	20	12,345.67	
DEC	30	23,456.78	
		42,036.96	S
	CR	41,234.56	—
	BL	802.40	T

Machine has all standard features plus the following:

Date Section on keyboard—Months and dates, together with symbols for debits (DR), Credits (CR) and Balance (BL)

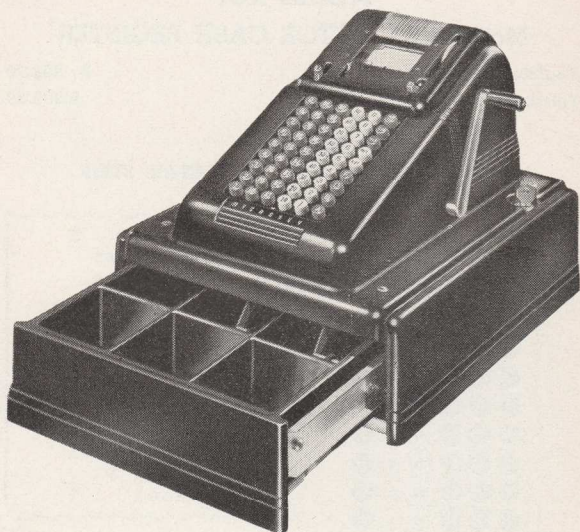
Wide Carriage—Posting machine is equipped with semi-automatic wide carriage which automatically moves from right to left with each operation of control keys or motor bar until stopped by adjustable tabular stops. Carriage return is manual. Hand-

dles forms up to 13" wide; adjustable single, double and non-spacing; variable line spacer, tab release, adjustable paper guides to feed narrow roll paper through platen twirlers.

Subtracted Items Print in Red—Totals and added items print in black, subtracted (credit) items print in red.

The Extended Total Feature is optional. This feature increases totaling capacity to 999,999.99.

VICTOR ADDING MACHINES



MODEL X-61 McCASKEY-VICTOR CASH REGISTER

*Manually Operated
Enforced Registration Feature*

The smartly styled McCaskey-Victor Cash Register offers a compact unit with flexible keyboard—designed for modern business needs. Provides 4 designating letter keys . . . Exempt key for non-taxable sales . . . Received on Account key . . . and three non-adding, listing keys for Charge, Tax and Paid Outs. Cash Register hood can be locked to protect detail strip record from being tampered with. Used as an adding machine for detail strip breakdown, it provides a wealth of business control information. Registers to \$999.99 and totals to \$9,999.99.

VICTOR ADDING MACHINES

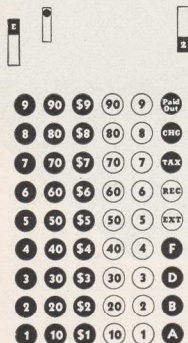
MODEL X-61

McCASKEY-VICTOR CASH REGISTER

Registering Capacity \$ 999.99
 Totaling Capacity 9,999.99

SAMPLE

KEYBOARD



DETAIL STRIP

.00	T
5.50	EX
24.10	RA
2.00	F
.06	TX
57.50	CH
25.00	PO
4.54	D
5.98	B
6.37	A
48.49	Z
3.36	F
51.85	T

Size—12 $\frac{1}{8}$ " wide x 15 $\frac{3}{4}$ " deep x 10 $\frac{3}{4}$ " high.

Weight—29 $\frac{1}{2}$ lbs. (with paper roll) approx.

Construction—Die-cast plastic case, light weight and durable.
 Heavy die-cast plastic cash drawer.

Cash Drawer—5 coin bins; two divided currency compartments to accommodate \$1, \$5, \$10 and \$20 bills separately.

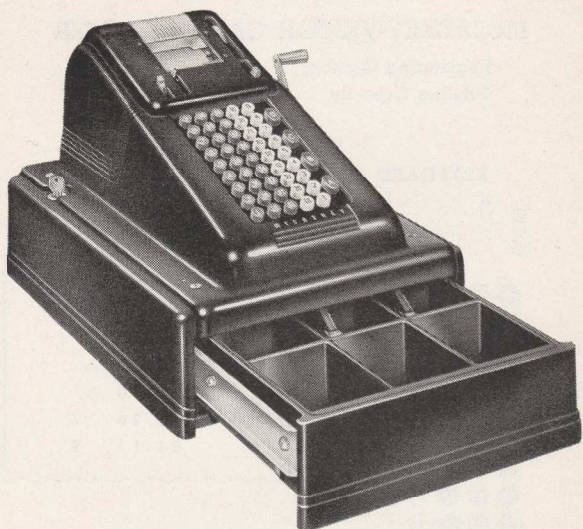
Keyboard—5 columns of amount keys plus 4 designating letter keys and 5 special entry keys.

Duo Protection—Separate keys to lock cash drawer and to lock hood over daily record strip. Owner can enforce clerk or department registration on every transaction.

Autographic Feature: Knurled wheel advances detail strip over writing table. Sliding window permits written entries.

Automatic Rewind—Tape automatically rewinds on take-up reel as entries are made. Complete printed tape removable at end of day. Easy access to paper roll and ribbon.

VICTOR ADDING MACHINES



MODEL X-6

McCASKEY-VICTOR CASH REGISTER

*Manually Operated
Enforced Registration Feature*

Big business effectiveness for the small business . . . or for individual counters. The streamlined, popular Model X-6 provides four designating letter keys to identify clerks, departments or kind of transactions. Special non-add key for listing charge sales or paid-outs plus instant-operating correction key. Contrasting keys for ease of operation, the Model X-6 registers to \$999.99 and totals to \$9,999.99.

Q U A L I T Y S I N C E 1 9 1 8

VICTOR ADDING MACHINES

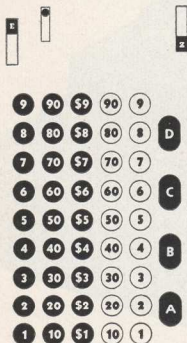
MODEL X-6

McCASKEY-VICTOR CASH REGISTER

Registering Capacity	\$ 999.99
Totaling Capacity	\$9,999.99

SAMPLE

KEYBOARD



DETAIL STRIP

.00	T
35.76	D
12.19	B
26.16	A
10.00	C
5.90	Z
84.11	T

Size: 12 $\frac{1}{8}$ " wide x 15 $\frac{3}{4}$ " deep x 10 $\frac{3}{4}$ " high.

Weight: 29 $\frac{1}{2}$ lbs. (with paper roll) approx.

Construction: Die-cast plastic case, light weight and durable. Heavy die-cast plastic cash drawer.

Cash Drawer: 5 coin bins; two divided currency compartments to accommodate \$1, \$5, \$10 and \$20 bills separately.

Keyboard: 5 columns of amount keys plus 4 designating letter keys to identify clerks or departments. Special non-adding, list key for charges and paid-outs plus instant-operating correction key.

Duo Protection: Separate keys to lock cash drawer and to lock hood over daily record strip. Owner can enforce clerk or department registration on every transaction.

Autographic Feature: Knurled wheel advances detail strip over writing table. Sliding window permits written entries.

Automatic Rewind: Tape automatically rewinds on take-up reel as entries are made. Complete printed tape removable at end of day. Easy access to paper roll and ribbon.



FEATURES

ADDITIONAL
FEATURES
AVAILABLE ON
VICTOR
ADDING MACHINES
and CALCULATORS

FOREWORD

On the pages following are listed special features which may be added to Victor adding machines and calculators as explained under each feature. By the use of these special features it is possible to "tailor make" machines for special purposes. Any special feature requirements requested by your customer that are not listed in this manual should be referred to the Home Office for verification of availability and price quotation.

To determine the total list price of a special feature machine, add the price of the special feature to the list price of the basic model machine involved. Tax must be computed on total list price of machine including features.

Complete identifying information on features must be shown on the customer order form. Where required, as indicated under the feature description, keyboard diagram must accompany the order.

Retail prices of all features are listed in the Price
Section of this Manual.

INDEX TO FEATURES

Feature Description	Feature Numbers	Page No.
Carriage—13" wide (movable)	5	62
Carriage—13" wide (semi-automatic).....	132	63
Characters—Special - Drug	174	63
Special - Grocery	175	63
Special - Service Station	176	63
Special - Alphabetical	177	63
Characters—Miscellaneous	92	63
Counter—Automatic Item	3, 148, 166	64
Counter—Mechanical	158, 169	65
Counter—Electrical	193	66
Counter—Electrical (Special)	238	66
Credit Union Posting Feature.....	157	66

FRACTIONS:

1/4	76, 147	67
1/4 (numerators)	77	67
1/2	75, 146	68
1/8	78, 145	68
1/12	79	69
1/12 (numerators)	80, 171	69-70
1/16	185	70-71
1/20 (numerators)	81	71
1/60 (units of one).....	82, 181	72
1/60 (units of five).....	83	72
1/12 - 1/8	118, 173	73
1/360 - 1/60 - 1/60 - 1/1000.....	90, 182	74
1/2000	84	74

VICTOR ADDING MACHINES

INDEX TO FEATURES (Contd.)

Feature Description	Feature Numbers	Page No.
Handle—Auxiliary	96	75
Interference Eliminator (Radio).....	86, 87, 156	75
Interference Eliminator—Conducted (Radio).....	167	75
Keytops—Cash Register	19	76
Lock—Control Key	107	76
Price Marker—		
Add-N-Mark	226	76-77
Prints Subtract in Red.....	20	77
Punctuation—None	161	77
Punctuation—Statistical	133	77
Repeat Key—Electrified.....	170	78
Spacing—Single and Double.....	172	78
Split—Cipher	137	78
Split—Permanent	138	79
Split—Permanent (Special)	139	79-80
Tax—Type Symbol TX.....	21	80
Total—Extended	94	80

TYPE FACES

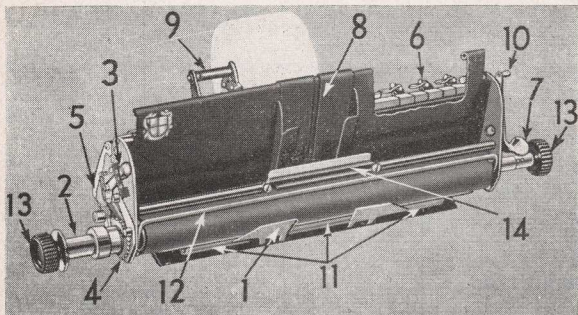
Small—Size 3/32	111	80.1
Underlined	186	80.1
Italics—Size 3/32	114	80.1
Voltage—Special.....	128, 130	80.1
Zero Eliminator	140	80.1



CARRIAGE 13" WIDE - MOVABLE

Feature No. 5

5 LINE



Carriage features as illustrated:

1. Horizontal line finder makes finding proper printing line fast and easy.
2. Vertical line spacer (soft roller)—permits very accurate alignment.
3. Adjustable space-up—non-space, single space, and double space.
4. Positive spacing ratchet—six lines to the inch vertically.
5. Roller bearing carriage slide—carriage slides easily with minimum friction.
6. 7 adjustable column stops—to be placed not closer than $11/16''$.
7. Tabular release—for horizontal spacing.
8. Adjustable paper guides—forces tape to feed straight.
9. Adjustable roll paper holder—handles narrow or wide roll paper.
10. Pressure roll release—for accurate and speedy paper alignment.
11. Positive pressure rollers—prevent paper slipping or creeping.
12. Paper bail—keeps paper from falling forward on the keyboard.
13. Right and left hand platen twirlers.
14. Tear-off blade—for roll paper.

CARRIAGE 13" WIDE - SEMI-AUTOMATIC

Feature No. 132

5 LINE

This feature allows the carriage to move to the left each time the machine is operated until stopped by the tabulator stop. 7 adjustable stops included. The carriage return is manual. The machine may also be operated the same as the regular wide carriage for vertical listing.

CHARACTERS — SPECIAL

#174 - #175 - #176 - #177

16, 60 LINES

These features may be used in either the right or left column. Each type bar will be standard type with key-buttons to match. If used on right hand column it will reduce both listing and totaling capacity by one column. If used on left column it will reduce the listing and totaling capacity by one column except on machines with carry-over total where the totaling capacity will be reduced by two columns. Keyboard Chart #361-188 must accompany order.

The type will print as follows:

FEATURE #174	FEATURE #175	FEATURE #176	FEATURE #177
DRUG STORE	GROCERY STORE	SERVICE STATION	ALPHA- BETICAL
X	A	S-Special	X
T-Tax	B	M—Miscellaneous	H
L-Lunch	C	A-Accessories	G
M-Magazines.	D	T-Tires	F
S-Sundries	S-Sundries	K-Kerosene	E
F-Fountain	T-Tax	W-Wash	D
P-Prescription	P-Produce	L-Lubrication	C
D-Drugs	M-Meat	O-Oil	B
C-Cigars and Cigarettes	G-Groceries	G-Gasoline	A

CHARACTERS — MISCELLANEOUS

Feature No. 92

ALL FULL KEYBOARD MODELS

Special characters may be placed in any listing column on the Keyboard. Limit, 1 or 2 letters per character per column. Complete specifications must accompany order to Home Office.

VICTOR ADDING MACHINES

COUNTER — AUTOMATIC ITEM

Feature No. 148

16, 60, 61 LINES—NON-CREDIT
BALANCE ONLY

Feature No. 166

17, 70, 71 LINES—NON-CREDIT
BALANCE ONLY

A two column Item Counter, 99 items, which reduces the listing capacity and totaling capacity by two columns on those models without carry-over totals. On models with additional column totaling capacity, this feature reduces listing capacity by one column and totaling capacity by two columns. An item is recorded when a figure is added or subtracted.

Feature No. 3

5 LINE

Automatically totals all items added and subtracted. The feature requires the first two left hand columns, and counts from one to ninety-nine inclusive. Item counter with more than one column capacity is available but decreases capacity of machine correspondingly.

(5 LINE)

		T
	5 4 8 . 9 3	
4 ,	8 9 6 . 7 5	
	5 8 . 9 6 N	
	3 6 9 . 8 2	
	5 8 9 . 7 4	
1 ,	2 6 9 . 7 0	
	1 2 8 . 9 6	
	4 5 8 . 9 0	
	6 7 8 . 5 2	
8	8 , 9 4 1 . 3 2 T	

(60 LINE)

	. 0 0 T
1	. 5 5
1	. 0 1
1	. 0 2
1	. 0 3
1	. 0 4
1	. 0 5
1	. 0 6
1	. 0 7
1	. 0 8
1	. 0 9
1 0	1 . 0 0 S
1 0	1 . 0 0 T

NOTE:

Item counters with capacity greater than 99 can be obtained upon special request, with full specifications. Capacities of the machine are reduced accordingly.

COUNTER — MECHANICAL

Feature No. 169

17, 70 LINES

An attached, automatic counter which registers with every stroke of the machine. It is located under the Keyboard plate at the lower left corner. Registers up to 99999 and is reset to zero manually. The capacities of the adding machine are not affected.



COUNTER — MECHANICAL

Feature No. 158

5 LINE

An automatic counter located at the upper left side of the case where it joins the case hood. Has capacity up to 99999 and operates with every cycle of the machine. Manual reset to zero.

COUNTER — ELECTRICAL

Feature No. 193

60, 70, 61, 71 LINE ELECTRICS & CALCULATOR LINE

An electric item counter attached to case, registering with every cycle of the machine. Has capacity of 9999, and resets to zero manually.

COUNTER — ELECTRICAL

Feature No. 238

CALCULATOR LINE ONLY

Same as Feature No. 193 except that when used with Calculator Models the counter operates only with Master Control Lever in add-subtract position.

CREDIT UNION POSTING FEATURE

Feature No. 157

5 LINE

This feature converts the standard Posting Machine to a Credit Union Posting Model. DR keybutton replaced by DV, indicating Dividend. CR replaced by FI, indicating Fine; BL replaced by EC, indicating Error Corrected. The semi-automatic carriage has 9 tabulating stops.

VICTOR ADDING MACHINES

FRACTIONS

1/4

Feature No. 76

5 LINE

Feature No. 147

16, 60, 61 LINES

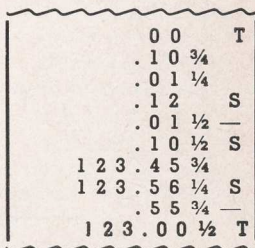
Standard keyboard with 1/4 fraction keys requiring first right hand column. Punctuated for dollars and cents unless otherwise specified.

(Illustration of 60 Line)

KEYBOARD



TAPE



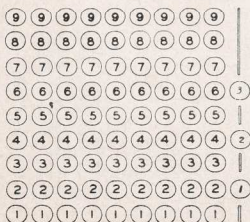
1/4 (NUMERATORS)

Feature No. 77

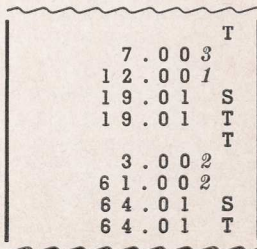
5 LINE

Same specifications as Feature No. 76 except that numerators only are printed. Numerators print in italic type.

KEYBOARD



TAPE



VICTOR ADDING MACHINES

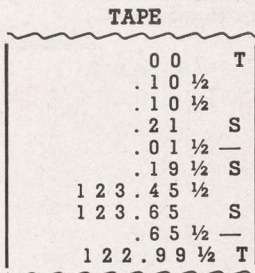
1/2

Feature No. 75
5 LINE

Feature No. 146
16, 60, 61 LINES

Standard Keyboard with 1/2 fraction key requiring first right hand column. Punctuated for dollars and cents unless otherwise specified.

(Illustration of 60 Line)



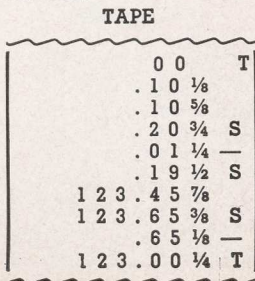
1/8

Feature No. 78
5 LINE

Feature No. 145
16, 60, 61 LINES

Standard Keyboard with 1/8 fraction Keys requiring first right hand column. Punctuated for dollars and cents unless otherwise specified.

(Illustration of 60 Line)



VICTOR ADDING MACHINES

1/12 Feature No. 79 5 LINE

Standard Keyboard with 1/12 fraction keys requiring first two right hand columns. Punctuated for dollars and cents unless otherwise specified.

Keyboard

9	9	9	9	9	9	9	9	9	9	3/4	1/2
8	8	8	8	8	8	8	8	8	8	5/8	3/8
7	7	7	7	7	7	7	7	7	7	7/8	1/8
6	6	6	6	6	6	6	6	6	6	1/2	
5	5	5	5	5	5	5	5	5	5	3/4	
4	4	4	4	4	4	4	4	4	4	1/2	
3	3	3	3	3	3	3	3	3	3	3/4	
2	2	2	2	2	2	2	2	2	2	1/2	
1	1	1	1	1	1	1	1	1	1	1/2	

Tape

											T
	2	.	1	2		1/12					
	7	5	.	1	2	11/12					
	7	7	.	2	5						S
	7	7	.	2	5						T
											T
	1	0	.	1	2	1/6					
	2	5	0	.	1	2	5/6				
	2	6	0	.	2	5					S
	2	6	0	.	2	5					T
	1	5	.	1	2	1/4					
	1	5	.	1	2	3/4					
	3	0	.	2	5						S
	3	0	.	2	5						T

1/12 (NUMERATORS)

Feature No. 80 5 LINE

Standard Keyboard printing numerators 1 thru 11. First two right hand columns required. Punctuated for dollars and cents unless otherwise specified.

Keyboard

9	9	9	9	9	9	9	9	9	9	11	
8	8	8	8	8	8	8	8	8	8	10	
7	7	7	7	7	7	7	7	7	7		
6	6	6	6	6	6	6	6	6	6		
5	5	5	5	5	5	5	5	5	5		
4	4	4	4	4	4	4	4	4	4		
3	3	3	3	3	3	3	3	3	3		
2	2	2	2	2	2	2	2	2	2		
1	1	1	1	1	1	1	1	1	1		

Tape

											T
	.	9	8	7							
	.	8	7	6							
	.	7	6	5							
	.	6	5	4							
	.	5	4	3							
	.	4	3	2							
	.	3	2	1							
	4	.	5	7	4	S					
	4	.	5	7	4	T					

VICTOR ADDING MACHINES

1/12 (NUMERATORS)

Feature No. 171

16, 60, 61 LINES

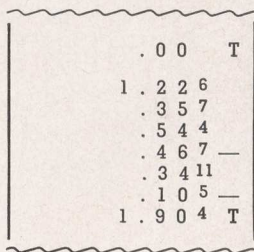
Keybuttons range from 1 to 11 in the first right hand column. Only numerators print as tape illustrates. Dollars and cents punctuation unless otherwise specified. Only available in odd bank of machine.

(ILLUSTRATION OF 60 LINE)

KEYBOARD



TAPE



1/16

Feature No. 185

16, 60, 61 LINES

(NON-CREDIT BALANCE MODELS)

This feature is designed for pounds and ounces applications. First two columns are used for ounces. Even ounces are added by depressing the specific ounce key in the second column. Odd ounces are added by depressing the next lower even Key in the second column and a "1" key in the first column. Example: To add 13 ounces, depress the 12 key in the second column and a 1 key in the first. It will print 12 1 or 13 ounces. Fractional figures print in underlined type. (Punctuation is statistical unless otherwise specified).

VICTOR ADDING MACHINES

1/60 (UNITS OF ONE)

Feature No. 82

5 LINE

Standard keyboard with 1/60 fraction keys requiring the first two right hand columns. Punctuated for dollars and cents unless otherwise specified.

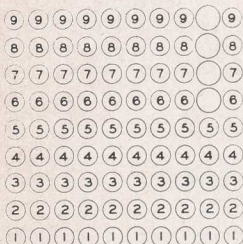
Feature No. 181

16, 60, 61 LINES

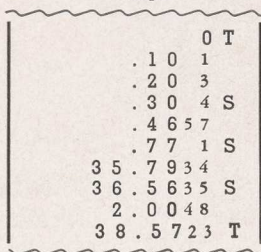
Standard keyboard with 1/60 fraction keys requiring the first two right hand columns. Punctuation for dollars and cents unless otherwise specified. Listing and totaling capacity reduced by 2 columns.

(ILLUSTRATION OF 60 LINE)

Keyboard



Tape



1/60 (UNITS OF FIVE)

Feature No. 83

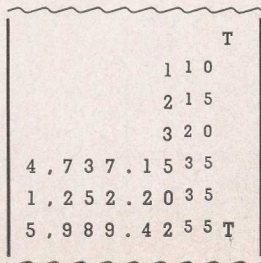
5 LINE

Same specifications as Feature No. 82 except that fractions print in units of five.

Keyboard



Tape



VICTOR ADDING MACHINES

1/360 - 1/60 - 1/60 - 1/1000

Feature No. 90

5 LINE - 10 COLUMN

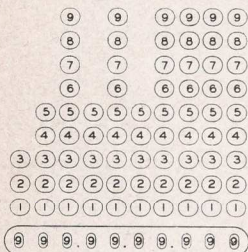
Feature No. 182

60, 61 LINE - 10 COLUMN

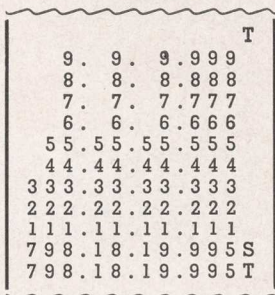
This feature adds and subtracts degrees, minutes, seconds and thousands of seconds. Automatically converts thousands of seconds into seconds, seconds into minutes and minutes into degrees. Feature requires a 10 Column Machine.

(ILLUSTRATION OF 5 LINE)

Keyboard



Tape



1/2000

Feature No. 84

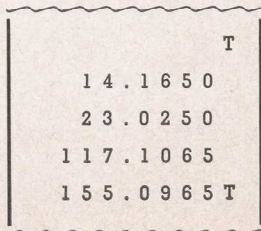
5 LINE

Standard keyboard with 1/2000 keys requiring first four right hand columns. Punctuated for tons and pounds.

Keyboard



Tape



HANDLE — AUXILIARY

Feature No. 96

5 LINE

This feature is designed to provide both manual and electric operation. This auxiliary handle with special geared-up mechanism changes the electric 5-line machine into a hand operated in times of emergency or in field work where current is not available. Conversion from electric to manual operation is easily accomplished by insertion of the handle which automatically disengages the motor and motor bar. The machine then operates like any manual machine except that the handle must be moved forward and backward.

INTERFERENCE ELIMINATOR (RADIO)

Feature No. 86

Feature No. 87

5 LINE

Feature 86 to be installed on machines when wave length interference is below 100 meters (short wave).

Feature 87 should be specified for wave lengths above 100 meters (standard broadcast).

Feature No. 156

**60, 70, 61, 71 ELECTRICS
AND CALCULATOR LINE**

Eliminates both conducted and radiated interference.

INTERFERENCE ELIMINATOR (RADIO) - CONDUCTED

Feature No. 167

**16, 17, 60, 70, 61, 71 LINES
AND CALCULATOR LINE**

Suppresses radio interference conducted thru the power line.

KEY TOPS — CASH REGISTER

Feature No. 19

5 LINE

Special Keytops made to show dollars and cents figures in place of standard numerals. This feature is limited to 6 columns. (Remaining columns will have standard Keytops.)

LOCK — CONTROL KEY

Feature No. 107

5 LINE

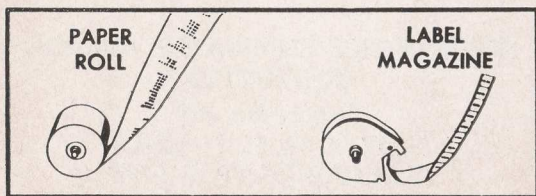
Locks grand total and/or sub-total on Duplex machine. Locks total and/or sub-total on Simplex. When specified, can provide shutter over dial wheels.

PRICE MARKER — (ADD-N-MARK)

Feature No. 226

6, 7, 16, 17, 60, 70 LINES

Permits printing of gummed or pressure sensitive labels by substituting Add-N-Mark cartridge for paper roll. Insertion of Add-N-Mark magazine automatically adjusts machine spacing for proper space-up printing on each label. Printing capacity on label, 99.99.



VICTOR ADDING MACHINES

ADD-N-MARK PRICE MARKING FEATURE

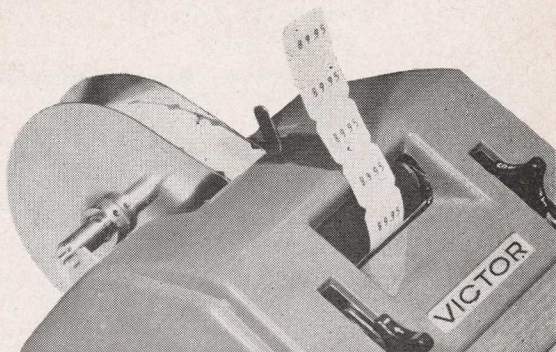


Illustration above shows price-marking label magazine in position. It is quickly and easily inserted or removed. Machine automatically reverts to normal adding machine spacing when magazine is removed.

PRINTS SUBTRACT ENTRIES IN RED

Feature No. 20

5 LINE

Permits subtract entries to be printed in red. Totals print in black.

PUNCTUATION — NONE

Feature No. 161

5, 16, 17, 60, 70, 61, 71 AND

CALCULATOR LINES

This feature eliminates all punctuation. Machine, other than 5-Line, equipped with this feature prints one zero on blank stroke.

PUNCTUATION — STATISTICAL

Feature No. 133

5, 16, 17, 60, 70, 61, 71 LINES

Punctuation in columns of three using only commas. Example, prints 9,999,999,999

REPEAT KEY — ELECTRIFIED

Feature No. 170

60, 70 LINES

Automatically repeats addition by depressing the Repeat Key. Keyboard clears when Repeat Key is released.

Note: No repeat subtraction.

SINGLE AND DOUBLE SPACING

Feature No. 172

16, 17, 60, 70 AND CALCULATOR LINES

This feature permits selective spacing of either six to the inch (single space) or three to the inch (double space).

SPLIT-CIPHER

Feature No. 137

5, 16, 60 LINES

This feature prevents the printing of automatic ciphers to the right of the specified column. It does not prevent the carry-over of accumulations from the right to the left of the split nor does it affect the totaling capacity of the machine.

The split-cipher should be specified when it is desirable to record, in one operation, units of quantity to the left of the split and amount in dollars and cents to the right. The full capacity of the machine may be used for entering large figures but ciphers will print only as described above.

Keyboard chart must accompany order and must specify columns between which split is to be made.

Split Here

1, 2 3	44.50	T
3, 4 5	867.50	
4, 6 8	912.00	T
2, 5 2 1, 6 3 7. 2 1		T
2, 2 1 8, 7 5 2. 4 3		
4, 7 4	389.64	T

SPLIT-PERMANENT

Feature No. 138

5, 16, 60, 61 LINES—

Non Credit Balance Models Only

This feature lists and accumulates addition, subtraction, total, sub-totals and non-add items on both sides of split. No carry-over from right to left of split. All items to left of split print in *italic type*. Keyboard chart must accompany order to indicate columns between which split is to be made and punctuation if desired.

(ILLUSTRATION OF 5 LINE)

split here

	T
1 2 0	3.40
5 6 0	7.80
6 8 0	11.20 T
	T
	5,555.55
	6,666.66
	2,222.21 T
<i>5 5 5 5</i>	
<i>4 4 4 4</i>	
9 9 9 9	T

SPLIT-PERMANENT (SPECIAL)

Feature No. 139

5, 16, 60, 61 LINES

No Credit Balance if listing columns are to left of split. Specifications are the same as Feature No. 138 except that it will not accumulate to the left of the split. Under this arrangement carry-over to a non-accumulating column is available with the addition of Feature No. 94 (Extended Total).

(ILLUSTRATION OF 5 LINE)

split here

	T
	3.80
	7.80
	11.60 T
<i>4 1 2 6 5</i>	5,555.55
8 2 5 3 6	6,666.66
	2,222.21 T

VICTOR ADDING MACHINES

Credit Balance is available if listing columns are to the right of split. Specifications will be the same as Feature No. 138 except that it will not accumulate to the right of the split.

(ILLUSTRATION OF 16 LINE)

split here

. 0 0	0 0 0	T C
1 2 . 5 0	1 2 3	
1 5 . 7 5	1 2 4	
1 6 . 2 5	1 2 5	
1 8 . 5 5	1 3 4	
1 3 . 6 7	1 3 7	
1 1 . 4 8	1 5 7	
1 4 . 6 7	0 0 0	
1 2 5 . 0 0	0 0 0	—
2 2 . 1 3	0 0 0	S C
2 2 . 1 3	0 0 0	T C

TAX — TYPE SYMBOL "TX"

Feature No. 21

5 LINE

The symbol "TX" automatically prints from special Key placed in position usually occupied by the non-add key which is eliminated. Amount of tax prints and adds.

TOTAL — EXTENDED

Feature No. 94

5 LINE

This feature is applicable to any 5-Line model when a carry-over to a non-accumulating column is desired. Amounts carried over into these columns will not print but will accumulate in dial wheels. Figures will print in the carry-over column on a total or sub-total, but will clear out on successive sub-total.

This feature can be used on any combination of columns or all columns with the exception of the carry-over from 5th to 6th column in a 10 column machine and 4th to 5th in our 8 column machine.

VICTOR ADDING MACHINES

TYPE FACES

SMALL SIZE TYPE - 3/32"

Feature No. 111

5 LINE

8 7 6, 5 4 3 .2 1

UNDERLINED TYPE

Feature No. 186

16, 17, 60, 70, 61, 71 LINES

8 7 6 5 4 3 2 1

Keyboard Chart must accompany order showing which columns to include this feature.

ITALIC TYPE

3/32" SIZE

Feature No. 114

5, 16, 17, 60, 70, 61, 71 LINES

8 7 6 5 4 3 2 1

Punctuation available on all models except 5-Line.

Keyboard chart must accompany order showing columns to include this feature, and punctuation, if any.

VOLTAGE — SPECIAL

Feature No. 130

16, 17, 60, 70, 61, 71 LINES

Feature No. 128

5 LINE

230 Volt Universal Motor.

ZERO ELIMINATOR

Feature No. 140

16, 17, 60, 70, 61, 71 AND

CALCULATOR LINES

Zeros will not print on the blank spacing stroke.

VICTOR ADDING MACHINES

ARCHITECT'S SPECIAL

Feature No. 171-145

16, 61 LINES

\$50.00

Eliminates the necessity of reducing factors to common denominators or decimal equivalents. Fractional amounts of halves, quarters, eighths and sixteenths can be indexed directly into the keyboard and added, subtracted (credit balance optional) and totaled at the discretion of the operator.

The two extreme right columns are for fractional parts of an inch. The next column is for inches and the balance to the left are for feet.

Maximum capacity obtainable — 99,999,999 feet. 11 and 15/16 inches (smaller capacities available, depending upon model, etc.) To index 15/16, depress the 7/8th key and the 1.

Keyboard

9	9	9	9	9	11		
8	8	8	8	8	10	7/8	1
7	7	7	7	7	9	3/4	1
6	6	6	6	6	8	5/8	1
5	5	5	5	5	7	1/2	1
4	4	4	4	4	6	3/8	1
3	3	3	3	3	5	1/4	1
2	2	2	2	2	4	1/8	1
1	1	1	1	1	3		1

Tape

		0.			T
		3	6	5.	2 3/8
		7	4	9.	5/8 1
		3,	0	2	5. 6 1
		2	6,	0	5 1. 9 1/4
		3	0,	1	9 1. 6 3/8 T

ELAPSED TIME

Feature No. 247

16, 61 LINES

\$100.00

Equips machine with twelfths and thirtieths fraction feature to compute elapsed time in days, months and years. Note diagram and tape for layout and results to be achieved. Available on Electric Imperial and Premier — with or without Credit Balance.

Keyboard

9	9	9	9	DC	9
8	8	8	8	NV	8
7	7	7	7	OT	7
6	6	6	6	SP	6
5	5	5	5	AU	5
4	4	4	4	JY	4
3	3	3	3	JE	3
2	2	2	2	MY	2
1	1	1	1	AP	1
				MR	
				FE	

Tape

					T
					T
		1	9	6	1 3 5
		1	9	4	6 5 1 2 -
				1	4 9 2 3 T
		1	9	4	6 5 1 2 -
		1	9	6	1 3 5
				1	4 9 2 3 T

(Ptd. 6-61)

VICTOR ADDING MACHINES

1 to 9 ADJUSTABLE SPACING

Feature No. 207

16, 17 LINES \$15.00

Where applications call for variable spacing can be set for any number of spaces in between.

HANDLE - AUXILIARY

Feature No. 257

61, 71 LINES \$30.00

This auxiliary handle with special geared-up mechanism changes the electric machine into a hand operated in times of emergency or in field work where current is not available. Conversion from electric to manual operation is easily accomplished by insertion of the handle, which automatically disengages the motor and motor bar.

The machine then operates like any manual machine except that the handle does not automatically restore—must be returned to home position.

TAPE REWIND - ELECTRIC MOTOR DRIVEN

Feature No. 302

16, 17, 61, 71 LINES \$75.00

Automatic rewinding of paper tape when it is desired to preserve it for record keeping, etc. A tension bar controlled by the clask in the paper regulates the speed of the rewinding motor. Unit is mounted to the rear of the machine.

(Ptd. 6-61)

ACCESSORIES

5219088

VICTOR A D D I N G M A C H I N E S

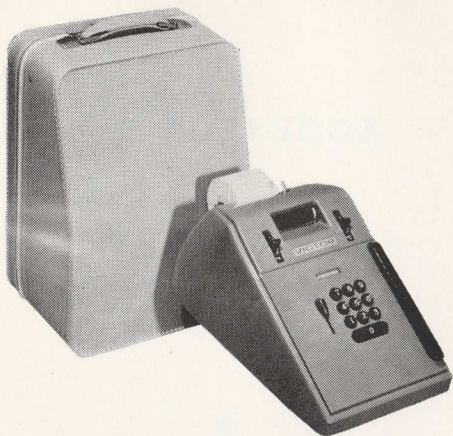
ACCESSORIES
for
VICTOR
ADDING
MACHINES



VICTOR ADDING MACHINE CO.

Q U A L I T Y S I N C E 1 9 1 8

VICTOR ADDING MACHINES



CHAMPION CARRYING CASES

- Number 1 for Straight Adder Models
- Number 2 for Hand-Operated Subtractors
- Number 3 for Electric Subtractors



IMPERIAL CARRYING CASES

- Number 5 for Electric Imperials

CHAMPION AND IMPERIAL CARRYING CASES

Sturdy vinyl leatherette case matches color decor of Champion and Imperial Adding Machines. Sleek, sweeping lines are designed for carrying-ease as well as beauty. Built to protect machine from damage and dust while traveling or in storage.

Easy to pack—just set machine in and “zip it up.” Handle on hand-operated machine stays in place. Cord for electric models is tucked alongside machine.

Adding machine feet fit into recessed sockets. Machine can't move or rattle.

Easy-grip handle securely attached to case with plated steel hinges.

CARRYING CASE #1

For Champion Straight Adders. Not necessary to dismantle operating handle when packing. Same style as case illustrated on opposite page.

CARRYING CASE #2

For Champion Hand-Operated Subtractor Models. Not necessary to dismantle operating handle when packing. Same style as case illustrated on opposite page.

CARRYING CASE #3

For Champion Electric Subtractors (illustrated, top of opposite page). Irremovable electric cord fits alongside machine.

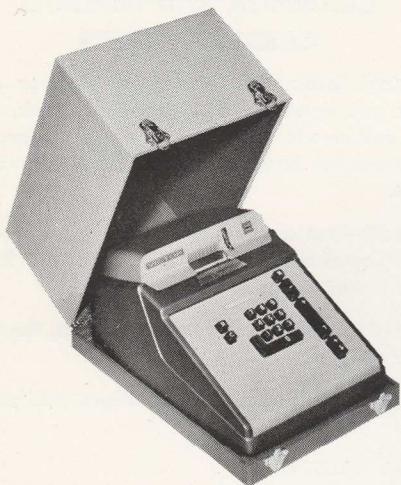
CARRYING CASE #5

For Electric Imperial Models (illustrated, bottom of opposite page). Electric cord fits alongside machine; easy to pack.

See Page 101 for prices.

VICTOR A D D I N G M A C H I N E S

PREMIER — CUSTOM — CALCULATOR CARRYING CASES



Built to protect your Victor machine from damage while traveling—or in storage. So easy to pack and carry . . . just set adding machine on the base, close the lid and fasten the clasps. No jockeying, binding or adjusting. Machine fits snugly in case—can't move or rattle. Lightweight, yet durable.

Sturdy frame is covered with tough leatherette. Removable adding machine handle or electric cord is securely stored in pocket within the carrying case. Chrome plated, double safety-snap latches—firmly fasten lid to base. Attractive two-tone tan and brown color. Handle is brown plastic.

CARRYING CASE #7

Large case is relatively light in weight for carrying case but provides excellent protection for Custom Adding Machines and Automatic Printing Calculators. Approximate weight is 4½ pounds.

CARRYING CASE #9

Gives your new Victor Premier Adding Machine positive protection; provides portability. Engineered for strength, designed for beauty. Weight is about 4½ pounds.

See Page 101 for prices.

VICTOR ADDING MACHINES

MACHINE DUST COVERS

FOR 5-LINE MODELS—black grained leatherette material.

FOR ALL CHAMPION MODELS—vinyl cover with brown piping and lettering.

FOR ALL CUSTOM MODELS—vinyl coated cloth; gray finish with green piping and lettering.

FOR ALL IMPERIAL, PREMIER AND CALCULATOR MODELS—vinyl coated cloth; tan finish with brown piping and lettering.

KEYTOP COVER PLATES

Gray metal kektop cover plates for the Executive and Custom Full Keyboard models available in the following sizes:

1 Column # SMD 424

2 Column # SMD 422

3 Column # SMD 425

See Page 101 for prices.

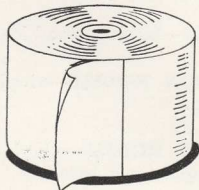
RIBBONS



Genuine Victor ribbons provide maximum durability by using the finest of long staple Sea Island cotton. Made with a high thread count, Victor ribbons give a clear, legible impression, free from screening. Impregnated with ink containing the finest pigments, they are fast to light and will not fade with age. See Page 101 for prices.

VICTOR ADDING MACHINES

ROLL PAPER



Each roll is provided with quick opening feature which wastes no tape. Standard rolls contain 250 feet of paper wound around a standard size, waxed hardwood core. Red end signal marks the tape three feet from end, is visible on both sides of the roll. Paper has a special finishing process which reduces lint to a minimum.

Special rolls are available: Standard size but with green tinted paper to harmonize with colored keyboards; double wound rolls for receipt issuing purposes, comes in extra width ($3\frac{3}{4}$ "). See Page 101 for prices.

SPONGE RUBBER PAD

Placed under a machine, the pad deadens sound, protects the desk. Reduces the desk travel of competitive machines.

PRICES

PRICES

MEMO

Rental-

Federal Tax 10% of price.

State Tax 3% of all price.

Rental Purchase-

Rental price plus Federal Tax
less State Tax

3 Months allowed on Rental Purchase.

300.00 Most on lease maximum

National Account \$200.00

Credit Rating Must Be D1 $\frac{1}{2}$ or better
others subject to office approval

Purchase-

No carrying charge

A-Full Payment

B-Net 30 days

C- $\frac{1}{2}$ -30- $\frac{1}{2}$ -60

D- $\frac{1}{4}$ Down 1/3-30 1/3-60-1/3-90

Installment Contract

Down Payment No trade in 10% cash

Trade In Down Payment 5% before
trade in

Minimum Payments 10.00 Per Mo.

Over

M E M O

4-18 months under \$300.00

24 Months over \$300.00

Intrest Rate $\frac{1}{2}$ Per Cent Per Month.

MEMO

MEMO

PRICES

VICTOR
ADDING MACHINES

•
FEATURES

•
ACCESSORIES

•
RENTALS

and

SERVICE

Victor Adding Machine Co.

VICTOR ADDING MACHINES

Q U A L I T Y S I N C E 1 9 1 8

SALES AND USE TAXES

Retail sales are subject to local sales and use taxes with certain exceptions. Such taxes vary between localities. It is important that each representative maintain up-to-date information on applicable taxes for his sales territory. (This

chart is for territory _____.)

State of _____

State Tax _____ % Effective _____

Additional taxes must be charged in the following cities and counties:

City or County	Tax
_____	_____ %
_____	_____ %
_____	_____ %
_____	_____ %
_____	_____ %
_____	_____ %

GENERAL:

National Buyer Discounts not subject to tax.

On shipments into another State, the tax rate for the State into which merchandise is delivered applies. (Where such rate is not known have customer's purchase order made out "Plus applicable taxes").

Sales to individuals working for Federal, State or local governments not exempt.

Merchandise sold for resale is not taxable. A Resale Certificate or Affidavit must be submitted with all orders when tax is not charged because the purchase is for Resale.

(Ptd. 2-58)

SALES AND USE TAXES (Continued)

1. Sales to Federal Government _____

2. Sales to State, County, and local political subdivisions _____

3. Sales to religious, charitable and private educational
institutions _____

4. Leases or rentals _____
5. Trade-in allowance _____
6. Sales of traded-in machines _____
7. Manufacturer's Federal Excise Tax _____
8. Rental allowance _____

9. Miscellaneous _____

(Pages 91-92 eliminated)

(Ptd. 2-58)

VICTOR ADDING MACHINES

- (A) Non profit organizations whose primary purpose is the promotion of a religion, education or a charity.
- (B) Lease or rental with option to purchase.
- (C) Option to purchase must be used within 90 days of first allowable rental sale to exempt the allowance.
- (D) Applies to retail sales by manufacturer only when tax is stated separately.
 - (1) Tax levied against retailer, must be paid whether collected from consumer or not.
 - (2) Some businesses and transactions exempted by constitution of state.
 - (3) Except where state or subdivision is engaged in a taxable business.
 - (4) Exemption includes hospitals but not educational institutions.
 - (5) Exemption does not include educational institutions.
 - (6) Exemption includes hospitals but not educational or charitable organizations.
 - (7) Hospitals exempt if earnings do not accrue to benefit of private shareholders.
 - (8) Except churches not engaged in business for a profit or savings.
 - (9) Lessor considered consumer and is liable for Use Tax.
 - (10) Lessor considered consumer and is liable for taxes. Two bases for tax: Lessor's purchase price or rental receipts received.
 - (11) Vendors not allowed to take sales tax reimbursement. Must apply to state.
 - (12) Exempt if option to purchase is used within 10 days of rental sale.
 - (13) Optional method of applying tax available.
 - (14) Used property purchases for resale subject to tax when sold at retail.
 - (15) Exempt only if trade-in to be sold by same retailers in regular business.
 - (16) Excess of value received on resale over original trade-in allowance is taxable.
 - (17) Exempt only if trade-in will be resold by same retailer in a taxable sale under Kansas law.

VICTOR ADDING MACHINES

- (18) Exempt only if resold by dealer who accepted item in trade.
- (19) Exempt only if trade-in is of like kind and nature as new property.
- (20) Trade-in allowance exempt if sale is covered by chattle mortgage or retention Title contract.

General:

National Buyer Discounts are not subject to tax. Shipment into another state is taxable and the receiving state's tax rate applies.

Taxes may be refunded when credit is allowed for returned goods. Taxes may not be refunded when goods are repossessed.

Sales to individuals working for Federal, State or Local Governments are not exempt.

Merchandise sold for resale is not taxable. Buyer should give resale certificate or affidavit indicating goods purchased for resale.

City Taxes:

In certain cities retail sales are subject to a city tax. These taxes are in addition to state taxes shown above. When making sales in unfamiliar cities, investigate whether a city tax should be added. Often these charges can be added to State Tax and shown as one amount.

VICTOR ADDING MACHINES

SALESMAN'S INSTRUCTIONS FOR PREPARING VICTOR ORDER FORM

(Form #361-21)

Fill in clearly the following sections:

Date of order, in upper right hand corner.

Sold to: (Complete name and address including zone no.).

Ship to: If delivered, write "DELIVERED." If delivery is to be made to location other than the "Sold to" address, enter here in full.

Quantity, Description, Model, Serial Number, Unit Price, Amount. (If machine is not delivered, omit serial number, as Branch or Home Office will assign a machine to the order.) If equipment sold is demonstrator, show "Demonstrator" with the model number.

Subtotal, Excise and Applicable Sales Taxes. Proper Certificates must be attached in all cases where customer claims exemption.

Trade-in (if any, show **Quantity, Make, Model, Serial Number, Amount** and subtract from previous total in the Trade-in Allowance space.)

Balance, Cash Payment (subtracted, to give **Cash Price Balance**.)

Payment terms: Enter "Net 30 days"; "1/2 net 30 days, 1/2 net 60 days"; "Balance 1/3 net 30 days, 1/3 net 60 days, 1/3 net 90 days" or enter specific installment terms as applicable, in accordance with Credit Policy (see page 123).

Seller-Branch (Enter name of Branch here)

Salesman (Sign your name on this line)

Customer's Signature Section: Have the customer sign with his firm name (if any), **personal signature**, title and address: In lieu of signature, reference may be made to customer's own purchase order, which must be attached to the Victor order.

Credit References: On the 3rd, 4th and 5th copies of the order, fill in credit references and complete credit information as required (See page 124.)

Detach customer's copy from the set and leave with customer, except in cases of Equipment Lease.

Source of Sales Data: Check proper box indicating source of sale, enter Business Code Number (refer to pages 125 and 126). Enter code number for county in which sale is made, and installed. (This information supplied to you by branch office.)

Special Features: If model sold includes features requiring a Keyboard diagram, be sure to get all information necessary for same.

EXCHANGE SALES

Equipment may be exchanged, within one year from date of purchase, toward the purchase of a model selling at a greater list price, without penalty of full trade-in depreciation. (No exchange for a model of lower list price.)

The exchange allowance is arrived at by subtracting from the original cost (list price plus taxes on the original sale) the proper percentage of the original list price, as follows:

Period Between Original Invoice Date and Exchange Sale	Percentage of List Price of Original Machine as Shown on Original Invoice
Within 1 month	0%
After 1 month, up to 2 months	5%
After 2 months, up to 3 months	10%
After 3 months, up to 4 months	15%
After 4 months, up to 6 months	20%
After 6 months, up to 8 months	25%
After 8 months, up to 10 months	30%
After 10 months, up to 1 year	35%

The exchange sale is written up on the regular Retail Order form pricing out the new machine, including applicable taxes in full. In the blank box in the upper center part of the order, write "Exchange Sale". For this exchanged machine show the make, model, serial number, and amount (exchange allowance) in the proper spaces. Show this exchange allowance in the "Amount" column opposite the wording "Less Trade-in Allowance."

The invoice covering the original sale remains in effect under the original terms, and any trade-in or payments made will remain applied to the original account.



PRICE SCHEDULE

MODEL		CAPACITY		Price	F.E.T.
10-Key	Full Keyboard	Total	List		

Automatic Printing Calculators

75-85-54	—	11	10	\$570.00	\$34.20
73-85-54	—	11	10	495.00	29.70
72-85-54	—	11	10	395.00	23.70

Comptograph Automatic Printing Multiplier

(Electrically Operated - Automatic Credit Balance)

12ML	—	12	11	\$445.00	\$26.70
------	---	----	----	----------	---------

Comptometer Key Driven Calculators

(Electrically Operated)

(Duplex) 12D	13	12	\$940.00	\$56.40
(Duplex) 9D	10	9	820.00	49.20
(Simplex) 12E	13	12	685.00	41.10
(Simplex) 9E	10	9	580.00	34.80

(Manually Operated)

(Simplex) 12B	13	12	\$500.00	\$30.00
(Simplex) 9B	10	9	415.00	24.90
(Simplex) 6B	7	6	275.00	16.50

Comptometer Peg Board

Size	COMPLETE		SEPARATE		
	Regular Board	Clip Board	•Peg Strips	•Line Guides	•Clip Strips
18x20"	\$45.00	\$54.00	\$5.00	\$7.50	\$11.00
18x24	54.00	65.00	6.00	8.00	13.00
18x30	68.00	80.00	7.50	9.00	16.00
18x36	80.00	95.00	9.00	10.00	20.00

• Paper Holding Tube (any length) \$1.50

• Orders for these items must be written up on Victor Service Ticket only, (Form No. 381-20).

All prices subject to change without notice
Effective May 1, 1962

(Ptg. 5-62)



VICTOR BUSINESS MACHINES CO.

M O D E L		CAPACITY		Price	F.E.T.
10-Key	Full Keyboard	Total	List		

Premier Adding Machines

(Electrically Operated - Automatic Credit Balance)

71-85-54-178	—	11	11	\$294.00	\$17.64
71-85-54	61-85-54	11	10	284.00	17.04
71-85-54-183	61-85-54-183	10	10	274.00	16.44
71-83-54	61-83-54	9	8	264.00	15.84

(Electrically Operated - Direct Subtraction)

71-60-54-178	—	11	11	\$274.00	\$16.44
71-60-54	61-60-54	11	10	264.00	15.84
71-60-54-183	61-60-54-183	10	10	254.00	15.24
71-58-54	61-58-54	9	8	244.00	14.64

(Manually Operated - Automatic Credit Balance)

71-85-4-178	—	11	11	\$219.00	\$13.14
71-85-4	61-85-4	11	10	209.00	12.54
71-83-4	61-83-4	9	8	189.00	11.34

(Manually Operated - Direct Subtraction)

71-60-4-178	—	11	11	\$199.00	\$11.94
71-60-4	61-60-4	11	10	189.00	11.34
71-58-4	61-58-4	9	8	169.00	10.14

Comptograph Adding Machines

(Electrically Operated - Automatic Credit Balance)

12L	—	12	11	\$314.00	\$18.84
11L	—	11	10	304.00	18.24
10L	—	10	9	294.00	17.64

(Duplex - Two Total)

12DL	—	12	11	\$495.00	\$29.70
------	---	----	----	----------	---------

Comptograph Wide Carriage Adding Machines

(Electrically Operated - Automatic Credit Balance)

13½" - Manual & Automatic Shuttle Carriage)

220WS (automatic)		12	11	\$535.00	\$32.10
220W (manual)		12	11	445.00	26.70
220SW (manual)		10	9	365.00	21.90

(Duplex - Two Total)

2TWS (automatic)		12	11	\$635.00	\$38.10
2TW (manual)		12	11	545.00	32.70

PRECISION PRODUCTS SINCE 1889



VICTOR BUSINESS MACHINES CO.

M O D E L		CAPACITY		Price	F.E.T.
10-Key	Full Keyboard	Total	List		

Imperial Adding Machines

(Electrically Operated - Automatic Credit Balance)

17-83-54	16-83-54	9	8	\$239.00	\$14.34
----------	----------	---	---	----------	---------

(Electrically Operated - Direct Subtraction)

17-58-54	16-58-54	9	8	\$219.00	\$13.14
----------	----------	---	---	----------	---------

Champion Adding Machines

(Electrically Operated - Automatic Credit Balance)

7-83-54	6-83-54	9	8	\$219.00	\$13.14
---------	---------	---	---	----------	---------

(Electrically Operated - Direct Subtraction)

7-58-54	6-58-54	9	8	\$199.00	\$11.94
7-57-54	6-57-54	8	7	171.00	10.26

(Manually Operated - Automatic Credit Balance)

7-83-4	6-83-4	9	8	\$134.00	\$ 8.04
--------	--------	---	---	----------	---------

(Manually Operated - Direct Subtraction)

7-58-4	6-58-4	9	8	\$114.00	\$ 6.84
--------	--------	---	---	----------	---------

(Manually Operated - Straight Adder)

7-8-4	6-8-4	9	8	\$ 94.00	\$ 5.64
-------	-------	---	---	----------	---------

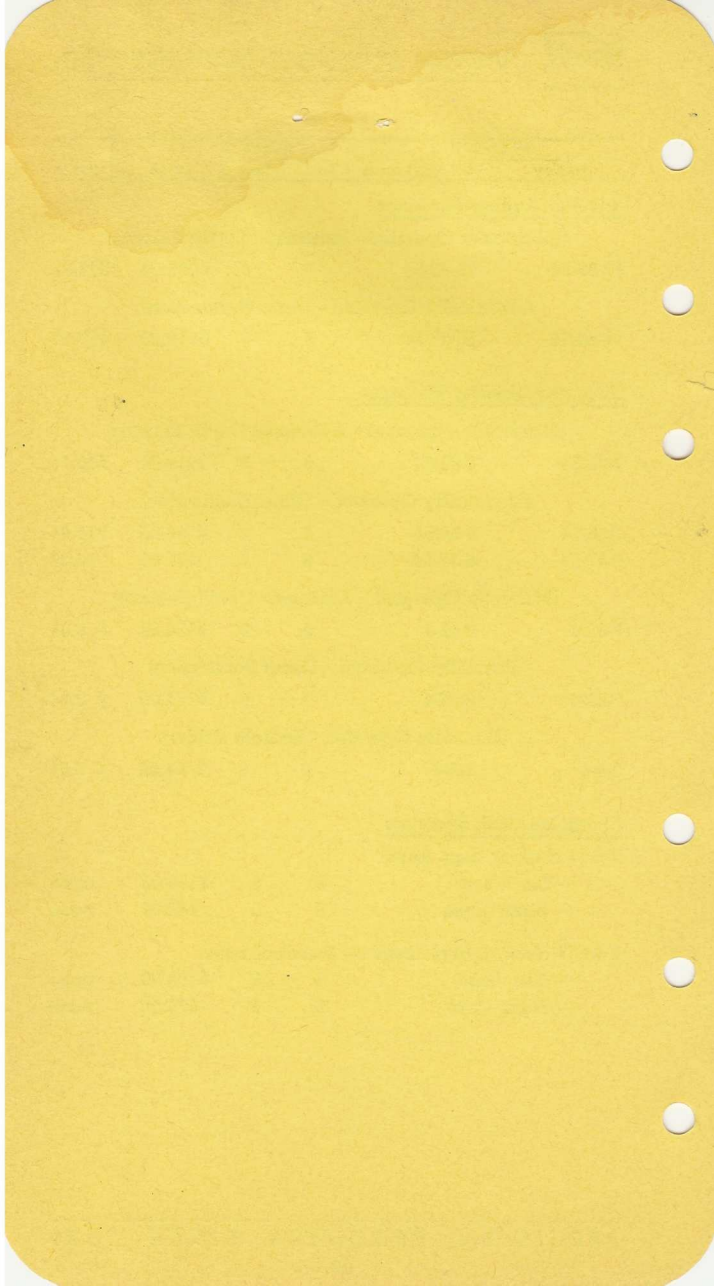
Champion Cash Registers

X-6 (4 clerk or dept. keys)

— Tan Case	6	5	\$159.00	none
— Black Case	6	5	149.00	none

X-61 (4 clerk or dept. keys — 5 control keys)

— Tan Case	6	5	\$189.00	none
— Black Case	6	5	179.00	none



VICTOR ADDING MACHINES

PRICES ON 5-LINE MACHINES

MODEL	Columns Capacity		Carriage Width	Direct Subtraction	Hand or Electric	Price	Fed. TAX	Code Name
	Totalling	Listing						
5-1-1-S.....	8	8	Narrow	Yes	Hand	185.00	11.10	Connecticut
5-1-5-S.....	8	8	Wide	Yes	Hand	230.00	13.80	Connecticut City
5-2-1-S.....	10	10	Narrow	Yes	Hand	235.00	14.10	Delaware
5-2-5-S.....	10	10	Wide	Yes	Hand	280.00	16.80	Delaware City
5-1-1-S-12.....	8	8	Narrow	Yes	Elec.	315.00	18.90	Georgia
5-1-5-S-12.....	8	8	Wide	Yes	Elec.	360.00	21.60	Georgia City
5-2-1-S-12.....	10	10	Narrow	Yes	Elec.	368.00	22.08	Illinois
5-2-5-S-12.....	10	10	Wide	Yes	Elec.	413.00	24.78	Illinois City
Statement Machine								
525-S-12-20-22.....	7	7	Wide	Yes	Elec.	448.00	26.88	Massachusetts
Posting Machine								
525-S 12-143.....	7	7	Wide	Yes	Elec.	498.00	29.88	Mass. City
525-S-12-143-144.....	9	9	Wide	Yes	Elec.	528.00	31.68	Mass. County
Grand Total Duplex								
511-12-25.....	8	8	Narrow	No	Elec.	360.00	21.60	Michigan
521-12-25.....	10	10	Narrow	No	Elec.	418.00	25.08	Michigan City
Selective Duplex								
511-12-30.....	8	8	Narrow	No	Elec.	390.00	23.40	Michigan County
521-12-30.....	10	10	Narrow	No	Elec.	448.00	26.88	Michigan State

All Prices Subject to Change Without Notice, Effective Date, September 1, 1955

(Ptd. 3-61)

VICTOR ADDING MACHINES

RENTAL PRICE SCHEDULE

VICTOR MODELS	Two Weeks	One Month	Three Months
Straight Adders	\$ 9.00	\$10.00	\$25.00
Hand Subtractors	12.00	15.00	35.00
Electrics	14.00	17.50	45.00
Calculators—All Models	19.00	25.00	65.00

COMPTOGRAPH MODELS

Electric Adding Machines	14.00	17.50	45.00
12AM	19.00	25.00	65.00

(No Duplex, Wide Carriage or Shuttle Carriage models available for rental)

COMPTOMETER MODELS

J & K	16.00	20.00	50.00
M	20.00	25.00	65.00
3D11	24.00	30.00	75.00
992 & 99C & 616CE	28.00	35.00	90.00

Rentals based on availability in respective branch.

All rentals must conform to the above prices and must be written up on Rental Contract (Form No. 361-15), and are payable in advance. The three-month rate is applicable only where rental contract covers full prepayment. **Minimum rental on all machines is two weeks.**

EXCISE TAX—10% excise tax must be added to the above prices when new machines are used on rentals. No excise tax on used machines placed on rental.

SALES TAX—State and local sales or use taxes must be added where applicable.

DISCOUNT—10% discount to authorized National Account Buyer.

RENTAL CREDIT—Up to three months paid rentals may be applied only on the purchase of either the same machine rented or a higher priced machine. If same machine rented is purchased, rental taxes will be credited to purchase price.

Federal Government Rentals

For rental price schedule and policy applying to Federal Government, see Victor Government Catalog (671-40) for current contract.

Effective Date, January, 1962

(Ptd. 1-62)

Q U A L I T Y S I N C E 1 9 1 8

VICTOR ADDING MACHINES

FEATURES PRICE LIST—16, 17, 60, 70 61, 71 & CALCULATOR LINES

Feature No.	Description	Price	Tax
226	Price Marker (ADD-N-MARK)	20.00	
(This feature also applicable to 6 & 7 Champion Line)			

CHARACTERS—SPECIAL

174	Drug	10.00
175	Grocery	10.00
176	Service Station	10.00
177	Alphabetical	10.00
92	Miscellaneous (Per Column)	25.00
148	Counter—Automatic Item (Full Keyboard)	15.00
166	Counter—Automatic Item (10-Key)	20.00
169	Counter—Mechanical	65.00
193	Counter—Electrical	100.00
238	Counter—Electrical (Calculator only)	135.00

FRACTIONS—Full Keyboard Only

147	1/4	20.00
146	1/2	20.00
145	1/8	20.00
171	1/12 (numerators)	30.00
185	1/16	20.00
81	1/20 (numerators)	20.00
181	1/60	30.00
173	1/12 - 1/8	50.00
182	1/360 - 1/60 - 1/60 - 1/1000	50.00
156	Interference Eliminator (Radio)	20.00
167	Interference Eliminator— Conducted (Radio)	12.50
161	Punctuation—None	N/C
133	Punctuation—Statistical	N/C
170	Repeat Key—Electrified	12.50
172	Spacing—Single and Double	10.00
137	Split—Cipher	5.00
138	Split—Permanent	15.00
139	Split—Permanent (Special)	15.00

TYPE

186	Underlined	5.00
114	Italics—Size 3/32	5.00
130	Voltage—Special	N/C
140	Zero—Eliminator	5.00

Tax to be computed at same rate as tax on basic model to which feature is applied.

(FEATURE PRICES CONTINUED) PTD. 2-60

Q U A L I T Y S I N C E 1 9 1 8

VICTOR ADDING MACHINES

FEATURES PRICE LIST—5 LINE

Feature No.	Description	Price	Tax
5	Carriage 13" wide (Moveable).....	45.00	2.70
132	Carriage 13" wide (Semi-automatic)....	80.00	4.80
92	Characters—MISCELLANEOUS (Per Column)	25.00	1.50
3	Counter—Automatic Item	15.00	.90
158	Counter—Mechanical	35.00	2.10
157	Credit Union Posting Feature.....	85.00	5.10
FRACTIONS			
76	1/4	15.00	.90
77	1/4 (numerators)	15.00	.90
75	1/2	15.00	.90
78	1/8	15.00	.90
79	1/12	15.00	.90
80	1/12 (numerators)	15.00	.90
81	1/20 (numerators)	15.00	.90
82	1/60 (units of one).....	15.00	.90
83	1/60 (units of five).....	15.00	.90
118	1/12 - 1/8.....	30.00	1.80
90	1/360 - 1/60 - 1/60 - 1/1000.....	15.00	.90
84	1/2000	15.00	.90
96	Handle—Auxiliary	15.00	.90
86	Interference Eliminator (Radio).....	25.00	1.50
87	Interference Eliminator (Radio).....	6.00	.36
19	Keytops (Cash Register).....	7.50	.45
107	Locks—Control Key	25.00	1.50
20	Prints Subtract in Red	10.00	.60
161	Punctuation—None	N/C	—
133	Punctuation—Statistical	N/C	—
137	Split—Cipher	5.00	.30
138	Split—Permanent	15.00	.90
139	Split—Permanent (Special)	15.00	.90
21	Tax—Type Symbol TX.....	10.00	.60
94	Total—Extended	30.00	1.80
111	Type—Small—Size 3/32	5.00	.30
114	Type—Italic—Size 3/32	5.00	.30
128	Voltage—Special	N/C	—

All prices subject to change without notice.

Effective date, February 8, 1960

PTD. 2-60

Q U A L I T Y S I N C E 1 9 1 8

VICTOR ADDING MACHINES

ACCESSORIES PRICES

CARRYING CASES

Number 1 (STRAIGHT ADDER MODELS).....	\$18.00
Number 2 CHAMPION SUBTRACTOR-HAND.....	19.00
Number 3 CHAMPION SUBTRACTOR-ELECTRIC.....	20.00
Number 5 (IMPERIAL-ELECTRIC MODELS)	22.00
Number 7 (CUSTOM AND CALCULATOR MODELS)..	22.50
Number 9 (PREMIER MODELS).....	22.50

ADDING MACHINE AND CALCULATOR RIBBONS

Red and Black Record 1/2", (5 line spool), each.....	
Dozen	
Black Record 5/16", (Champion, Imperial, Custom, Calculator lines) each	
Dozen	
Red and Black Record 1/2", (Premier spool), each.....	
Dozen	

KEYTOP COVER PLATES

#SMD 424 (1 Column).....	.90
#SMD 422 (2 Column).....	1.20
#SMD 425 (3 Column).....	1.34

ADDING MACHINE AND CALCULATOR PAPER ROLLS

Standard Size Rolls, 2-9/32" Wide

Premium Grade—White

Single Rolls	
Deluxe Package, 6 Rolls.....	
Case, 100 Rolls.....	

Grade and/or Color.....

Single Roll	
Deluxe Package, 6 Rolls.....	
Case, 100 Rolls.....	

MACHINE STAND

ADD-N-MARK LABELS

Pressure Sensitive, 1000 labels per roll.

Each (minimum, 3 rolls).....	\$2.55
50M or more, per roll, plain....	1.90; imprinted.... 2.85
100M or more, per roll, plain....	1.50; imprinted.... 1.80

Gummed, 2000 labels per roll.

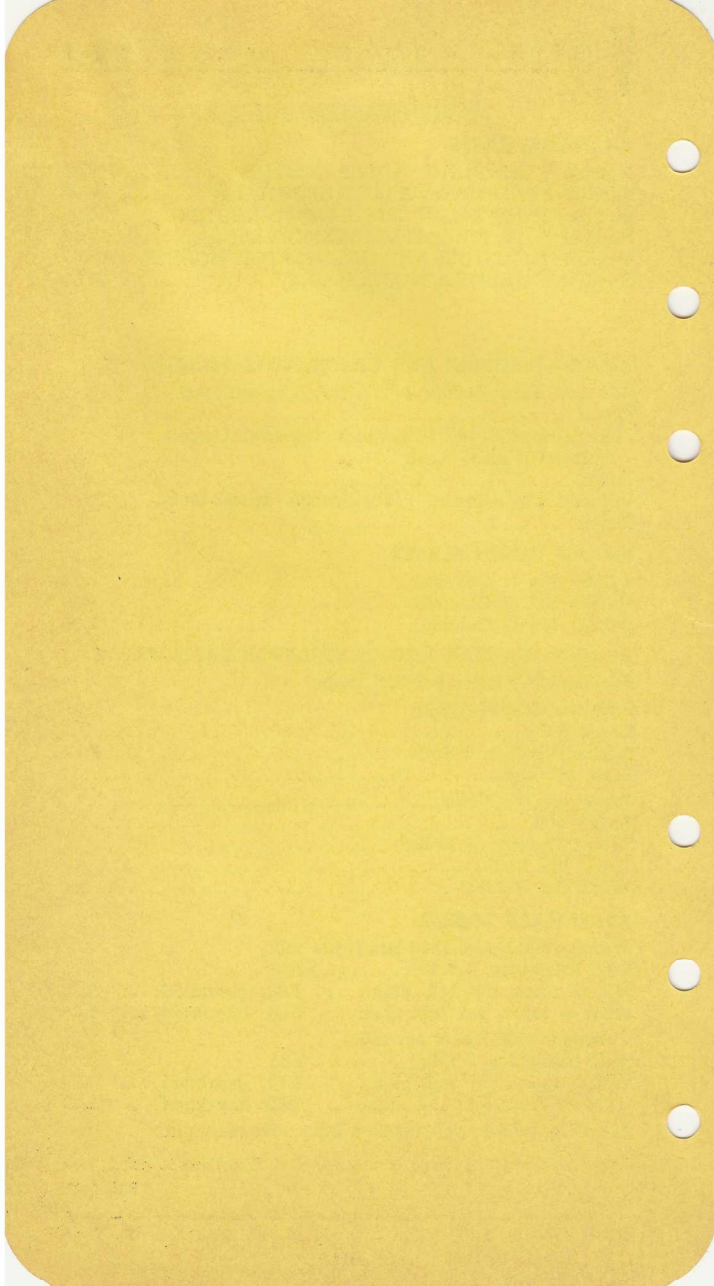
Each (minimum, 3 rolls).....	2.55
50M or more, per roll, plain....	2.10; imprinted.... 4.30
100M or more, per roll, plain....	1.80; imprinted.... 2.40

(Larger quantities on quotation from your manager.)

Prices subject to change without notice. Effective: March 1, 1961

(Ptd. 3-61)

Q U A L I T Y S I N C E 1 9 1 8



VICTOR ADDING MACHINES

MAINTENANCE SERVICE PRICES

WITH RIBBONS

MODEL	CODE	ZONE 1	ZONE 2	ZONE 3
6/7 HA	2HR	\$14.00	\$15.20	\$17.00
6/7 HS	2HSR	15.50	16.85	18.88
6/7 HCB	2HSR	16.50	17.95	20.13
6/7 ES	2ESR	20.50	22.35	25.15
6/7 ECB	2ESR	21.50	23.45	26.38
16/17 HS	2HSR	16.50	17.95	20.13
16/17 HCB	2HSR	17.50	19.05	21.38
16/17 ES	2ESR	21.50	23.45	26.38
16/17 ECB	2ESR	22.50	24.55	27.63
60/70 HS	2HSR	17.50	19.05	21.38
60/70 HCB	2HSR	18.50	20.15	22.63
60/70 ES	2ESR	22.50	24.55	27.63
60/70 ECB	2ESR	23.50	25.65	28.88
61/71 HS	2HSR	18.50	20.15	22.63
61/71 HCB	2HSR	19.50	21.25	23.88
61/71 ES	2ESR	23.50	25.65	28.88
61/71 ECB	2ESR	24.50	26.75	30.13
72/74-85-54	2ESR	34.50	37.75	42.63
73/75-85-54	2ESR	42.00	46.00	50.00
310/511	2HR	14.00	15.20	17.00
310/320-S	2HSR	15.50	16.85	18.88
511/521-S	2HSR	15.50	16.85	18.88
515/525-S	2HSR	17.50	19.05	21.38
511/521-12	2ER	19.00	20.70	23.25
511/521-S-12	2ESR	20.50	22.35	25.13
515/525-S-12	2ESR	22.50	24.55	27.63
8 H	2HR	28.50	31.20	33.80
8 E	2ER	33.50	36.68	39.86
X REG.	2HR	17.50	19.05	21.38

Prices subject to change without notice and subject to state or local taxes where applicable. Effective: February 15, 1960

(Ptd. Mar. 1961)

(Continued Other Side)

Q U A L I T Y S I N C E 1 9 1 8

VICTOR ADDING MACHINES

(Continued) MAINTENANCE SERVICE PRICES

WITH RIBBONS

MODEL	CODE	ZONE 1	ZONE 2	ZONE 3
EL REG.	2HR	19.00	20.70	23.25
ER-6-7-9	2HR	19.00	20.70	23.25
ER-10	2HR	21.00	22.90	25.75
ER-7-9-E	2ER	24.00	26.20	29.50
ER-10-E	2ER	26.00	28.40	32.00
D Reg.	2ER	34.50	37.65	42.38

MODEL CODE:

- A Adder
- E Electric
- H Hand
- S Subtract
- CB Credit Balance

NOTE: For agreements for three years merely double the prices for each machine listed above. In such cases the code should then be 5HR, 5ESR, etc. For agreements without ribbons subtract \$2.00 from price shown for all models excepting D model registers subtract \$3.00 from price shown. Do not include the "R" in the code on these agreements.

ZONE 1—Machines located within a ten mile area of an authorized service station or within the city limits of a city in which an authorized service station is located, whichever is furthest.

ZONE 2—Machines located beyond ZONE 1, but within 25 miles of authorized service station.

ZONE 3—Machines located beyond ZONE 2, but within 50 miles of authorized service station.

For agreements on Special Feature machines the same price applies as on the basic models.

The following conditions should apply to machines before they are accepted for maintenance service:

1. All machines must be in A-1 condition.
2. Electric 5 line machines must have a direct drive motor.
3. Portable subtractors must not have zero eliminator unit at rear of machine.

Prices subject to change without notice and subject to state or local taxes where applicable. Effective: February 15, 1960
(Ptd. Mar. 1961)

(NOTE: Pages 105-106 have been eliminated)

VICTOR ADDING MACHINES

RENTAL PRICE SCHEDULE

Models	Two Weeks	One Month	Three Months
Straight Adders	\$ 9.00	\$10.00	\$25.00
Hand Subtractors	12.00	15.00	35.00
Electrics	14.00	17.50	45.00
Calculators—All Models	19.00	25.00	65.00

All rentals must conform to the above prices. The three-month rate is applicable only where rental contract calls for full prepayment.

EXCISE TAX—10% excise tax must be added to the above prices.

SALES TAX—State and local sales or use taxes must be added to above prices where applicable.

DISCOUNT—10% discount to authorized National Buyer or Governmental operations.

RENTAL CREDIT—Up to three months paid rentals and taxes may be applied only on the purchase of either the same machine rented or a higher priced machine.

SPECIAL MACHINES—May be rented on a monthly basis at 5% of the list price, plus taxes, of the machine involved.

Effective Date, January 1, 1959

(PTD. 2-59)

Q U A L I T Y S I N C E 1 9 1 8

VICTOR ADDING MACHINES

PRICES ON 5-LINE MACHINES

MODEL	Columns Capacity		Carriage Width	Direct Subtraction	Hand or Electric	Price	Fed. TAX	Code Name
	Totalling	Listing						
5-1-1-S.....	8	8	Narrow	Yes	Hand	185.00	11.10	Connecticut
5-1-5-S.....	8	8	Wide	Yes	Hand	230.00	13.80	Connecticut City
5-2-1-S.....	10	10	Narrow	Yes	Hand	235.00	14.10	Delaware
5-2-5-S.....	10	10	Wide	Yes	Hand	280.00	16.80	Delaware City
5-1-1-S-12.....	8	8	Narrow	Yes	Elec.	315.00	18.90	Georgia
5-1-5-S-12.....	8	8	Wide	Yes	Elec.	360.00	21.60	Georgia City
5-2-1-S-12.....	10	10	Narrow	Yes	Elec.	368.00	22.08	Illinois
5-2-5-S-12.....	10	10	Wide	Yes	Elec.	413.00	24.78	Illinois City
Statement Machine								
525-S-12-20-22	7	7	Wide	Yes	Elec.	448.00	26.88	Massachusetts
Posting Machine								
525-S 12-143	7	7	Wide	Yes	Elec.	498.00	29.88	Mass. City
525-S-12-143-144	9	9	Wide	Yes	Elec.	528.00	31.68	Mass. County
Grand Total Duplex								
511-12-25	8	8	Narrow	No	Elec.	360.00	21.60	Michigan
521-12-25	10	10	Narrow	No	Elec.	418.00	25.08	Michigan City
Selective Duplex								
511-12-30	8	8	Narrow	No	Elec.	390.00	23.40	Michigan County
521-12-30	10	10	Narrow	No	Elec.	448.00	26.88	Michigan State

All Prices Subject to Change Without Notice, Effective Date, September 1, 1955 (PTD. 2-59)

BASIC VICTOR LEASING POLICY AND PROGRAM

General Information

Victor provides both a three and a five year no carrying charge lease. The 5-year lease is available only to established Victor National Accounts. Leases are non-cancellable.

The minimum amount of any lease is \$200 to National Accounts and \$300 to other commercial accounts.

Credit rating for all firms qualifying for the Victor Lease Program is D 1½ or better. Other firms interested in a lease program are subject to home office approval.

Complete maintenance coverage must be in effect during the tenure of the lease. For the three year lease, three years maintenance for the price of two; for the five year lease, five years maintenance for the price of four.

Preparation of Lease

When a lease order form is prepared, a standard branch order must be filled out completely and accompany the lease order forms. Only the lease application must be signed by the customer.

The lease order form (361-251) must be prepared in triplicate and signed by both the customer and the Victor representative. Original and duplicate copies are sent to the Victor home office with the regular branch order. The duplicate copy of the lease is returned to the customer with the initial invoice.

Annual Renewals

A maximum of three one-year renewals are permissible on the three year lease and one renewal on the five year lease.

Annual renewal charge is 3 % of list selling price of equipment on lease plus yearly maintenance for each additional renewal.

Replacement Option

At the expiration of the original lease or at the expiration of the renewal periods, original leased equipment may be replaced with new equipment of a similar type. The following credits are allowed on the list price of the original leased equipment:

- 15%—end of three years; 10%—end of four years;
- 7½%—end of five years; 5%—end of six years.

Trade-Ins

Standard Victor policy of a one for one basis applies.

Equipment

Only new equipment may be leased.

VICTOR ADDING MACHINES

National Accounts

The standard National Account Policy will prevail on lease orders.

Taxes

Sales tax wherever applicable must be charged.

Federal Excise Tax also applies to lease orders.

Terms, Billing, and Initial Deposits

THREE YEAR LEASE: Billing will be on a quarterly, semi-annual or annual basis only. Initial deposit due covers the first month and the last two months of the lease, equal to one quarterly payment.

On the quarterly plan, balance due is divided into 11 quarterly payments.

On the semi-annual plan, balance due is divided into 6 semi-annual payments.

On the annual plan, balance due is divided into 3 annual payments.

First regular payment on each of the above payment plans is due 30 days after delivery of equipment.

FIVE YEAR LEASE: Billing will be semi-annual or annual basis only.

On the semi-annual plan, total amount of lease is divided into 10 semi-annual payments.

On the annual plan, total amount of lease is divided into 5 annual payments.

First regular payment on each of the above plans is due upon delivery of equipment.

Option to Purchase

If customer insists on an option to purchase, the proper forms (361-243) must be signed in triplicate at the time the lease agreement is signed. The original and duplicate are sent to the Victor home office with the balance of the lease papers and the duplicate copy is returned to the customer with the initial invoice.

THREE YEAR LEASE: The customer may exercise his option to purchase at any time within the three year lease period by paying balance due (if any) plus a termination fee of $\frac{1}{2}$ of 1% per month of the total purchase price, less maintenance, for each month the lease was in effect. In the event the lease was extended the 4th, 5th, or 6th years, the option to purchase could be exercised with a termination fee of $\frac{1}{2}$ of 1% per month for the first 36 months and $\frac{1}{4}$ of 1% for each month the contract is in effect beyond the original 36 months.

FIVE YEAR LEASE: The customer may exercise his option to purchase at any time up to three years of the five year lease period by paying the balance due plus a termination fee of $\frac{1}{2}$ of 1% per month of the total purchase price, less maintenance, for each month the lease was in effect within the first three year period.

VICTOR ADDING MACHINES

U.S. FEDERAL GOVERNMENT PRICE LIST

Fiscal Year July 1, 1961 to June 30, 1962

Contract No. GS-00S-34787

This list contains representative models and contracted prices for the Federal Government and is not to be used for Commercial reference.

For a complete listing of models, prices and general information, refer to the Victor Authorized Federal Supply Schedule Price List (Government Catalog).

Federal Government Quantity Discount Schedule

All adding machines and applicable features included under this contract with the Federal Government are subject to the following discount reduction from the current "Net Government Price."

Quantity	Discount
50 - 99 Units.....	3.4%
100 - 199 Units.....	7.8%
200 and over.....	10.0%

To qualify for the above quantity discount, the Ordering Department or Agency must order these machines for its own use, and on a single order. (These quantity discounts do not apply to calculator, Mult-O-Matic, or cash register models).

When an adding machine is to be used for instructional purposes by a school, a 16-2/3% discount will be allowed from the current "Net Government Price." Purchase orders should indicate that the machines are for instructional use.

Federal Government Requisitioning

Properly completed requisitions should include:

1. GSA Special item number listed in the Catalog.
2. GSA Federal and/or Military stock number listed in the Catalog.
3. Victor contract number.
4. Victor model number.
5. Capacity and features.
6. Net Government Price - excise tax - total price.

Sample Requisition for Calculator "75"

50-103-1 *7420-531-7473 Victor Automatic Calculator

Model 75-85-54\$554.35 \$38.10 \$592.45

Victor Automatic Printing Calculator List 10, Tot. 11, Add, List, Subt., Auto. Cr. Bal., Auto. Mult. and Div., Elec. Oprtd. This required calculator functions as an adding machine and calculator and offers exclusive features including Auto. Constant Divisor, Constant Multiplicand, Total Transfer Mechanism, Auto. Neg. Mult., Selective Totals and Sub-Totals, Single 10 Key Kybd., VICTOR Model 75-85-54.

Contract Number GS-00S-34787

*GSA Federal Stock Number (Refer to Government Catalog for Military Stock Nos.)

Q U A L I T Y S I N C E 1 9 1 8

VICTOR ADDING MACHINES

CONTRACTED FEDERAL GOVERNMENT PRICES

Model No.	Net Gov't. Price	Excise Tax	Total Price
†AUTOMATIC PRINTING CALCULATORS—ELECTRIC			
75-85-54—Deluxe	\$554.35	\$38.10	\$592.45
73-85-54—Special	481.50	32.10	513.60

†AUTOMATIC MULT-O-MATIC PRINTING CALCULATORS—ELECTRIC			
74-85-54—Deluxe	436.50	29.10	465.60
72-85-54—Special	391.50	26.10	417.60

†PREMIER MODEL ADDING MACHINES—ELECTRIC			
10 Key	Full Key		
71-85-54-178	—	264.60	17.64
71-85-54	61-85-54	255.60	17.04
71-60-54	61-60-54	237.60	15.84
71-85-54-183	61-85-54-183	246.60	16.44
71-60-54-183	61-60-54-183	228.60	15.24
71-83-54	61-83-54	237.60	15.84
71-58-54	61-58-54	219.60	14.64

†NOTE: Electronic Shielding is available on all Calculator and Premier Models. Add Feature No. 156 at \$17.50 Net plus \$1.17 F.E.T.—\$18.67 Total Gov't Price.

IMPERIAL MODEL ADDING MACHINES—ELECTRIC			
10 Key	Full Key		
17-83-54	16-83-54	215.10	14.34

CHAMPION MODEL ADDING MACHINES			
10 Key	Full Key		
7-83-54 Elec.	6-83-54 Elec.	197.10	13.14
7-83-4 Hand	6-83-4 Hand	120.60	8.04

CASH REGISTERS—ELECTRIC			
D-81		451.25	—
8-17-53		284.05	—

SPECIAL MODELS

Representative special models are described and priced in the Victor Federal Government Catalog as follows:

- Post Office—Money order (Cipher split)
- Money order (Permanent split)
- Hours and minutes
- Wide carriage

- Military—Airport Timekeeping (Electric)
- Airport Timekeeping (Electric and Hand)
- Military payroll (Wide carriage)
- Field use (Electric and Hand)
- Electronically Shielded (Electric)
- Electronically Shielded (Electric and Hand)

In addition to the representative models listed in the Special Models Section of the Government Catalog, numerous other features can be adapted to most Victor models to suit each individual work application. Refer to the Features Section of the Government Catalog for full details.

VICTOR BUSINESS MACHINES

VICTOR ADDING MACHINES AND CASH REGISTERS
 U. S. GOVERNMENT CONTRACT No. GS-00S-34787
 July 1, 1961 to June 30, 1962

Item 50-212 MAINTENANCE SERVICE PRICES

MODEL	CODE	ZONE 1	ZONE 2	ZONE 3
6/7 HA	3H	16.00	17.60	20.00
6/7 HS	3HS	18.00	19.80	22.51
6/7 HCB	3HS	19.33	21.27	24.17
6/7 ES	3ES	24.67	27.13	30.84
6/7 ECB	3ES	26.00	28.60	32.51
16/17 HS	3HS	19.33	21.27	24.17
16/17 HCB	3HS	20.67	22.73	25.84
16/17 ES	3ES	26.00	28.60	32.51
16/17 ECB	3ES	27.33	30.07	34.17
60/70 HS	3HS	20.67	22.73	25.84
60/70 HCB	3HS	22.00	24.67	27.51
60/70 ES	3ES	27.33	30.07	34.17
60/70 ECB	3ES	28.67	31.53	35.84
61/71 HCB	3HS	23.33	25.67	29.17
61/71 ES	3ES	28.67	31.53	35.84
61/71 ECB	3ES	30.00	33.00	37.51
72/74-85-54	3ES	43.33	47.67	54.17
73/75-85-54	3ES	56.00	61.33	66.67
511/521	3H	16.00	17.60	20.00
511/521-S	3HS	18.00	19.80	22.51
511/521-12	3E	22.67	24.93	28.33
511/521-S-12	3ES	24.67	27.13	30.84
X REG.	3H	20.67	22.73	25.84
8 H REG.	3H	35.32	38.92	42.39
8 E REG.	3E	41.99	46.23	50.47
D-81 REG.	3E	42.00	46.20	52.51

MODEL CODE:

A Adder	S Subtract
E Electric	CB Credit Balance
H Hand	

Additional Charges:

500 Line machine with wide carriage . . . \$2.00 per unit.

Add 20% to the above prices for the State of Alaska to cover higher labor rates.

VICTOR BUSINESS MACHINES

ZONES

Zone 1.—Machines located within a 10 mile area of service station or within the city limits of a city in which a service station is located, whichever is furthest.

Zone 2.—Machines located beyond Zone 1 but within 25 miles of service station.

Zone 3.—Machines located beyond Zone 2 but within 50 miles of service station.

Machines located more than 50 miles from a Victor service station are not eligible for service under this item.

PROVISIONS

To be acceptable for maintenance service, each machine must be adjudged to be in good operating condition by an authorized representative of the Victor Adding Machine Co. or must be placed in good operating condition at Government expense at the rates shown under Item 50-211.

Thorough inspections by the contractor are to be made in accordance with commercial practice governing maintenance of the particular machine, but in no event shall more than 4 months elapse between such inspections. The cost of inspections and service shall include necessary repair parts (but not supplies, electric cords or accessories) to keep the machines in good operating condition. Only new, standard parts, manufactured by the maker of each machine bid on, will be used. Bids hereunder, will be based on equipment in good operating condition at the time the order is placed.

Scheduling of inspections on orders received for periods of less than one (1) year will be negotiated between the Government issuing office and the Victor Adding Machine Co. Service Station.

For failure to perform inspections as stipulated above, the Government may deduct 1/12th the yearly maintenance rate for each month the inspection is delayed.

Service will be rendered no later than the next scheduled working day after receipt of written or oral emergency call from the Government on machines located within the limits of Zone 1 of cities where Victor Adding Machine Co. Offices or Representatives are located and maintained. For machines located in Zones 2 and 3, service will be rendered no later than the second scheduled working day after receipt of written or oral emergency call from the Government.

For failure to render emergency service calls as stipulated above, the Government may deduct 1/30th the monthly maintenance rate for each day the machine is inoperative.

VICTOR BUSINESS MACHINES

The Contractor may honor orders for maintenance for periods of less than one year, in which event payments to the Contractor shall be pro-rated on the basis of 1/12th of the bid price, for each month, during which the service shall be rendered, plus 1/30th of the monthly rate for each day less than a complete month, it being understood that once an order for service is placed, it will continue in effect during the remainder of the contract period. However, where the ordering office discontinues the use of a machine being serviced under a maintenance agreement, the Government may terminate the order as to that particular machine upon 30 days written notice to the Contractor, payment to the Contractor to be pro-rated as stated above.

On renewals without lapse of Maintenance Service, shop repair work, when required, will be included at no additional charge. Shop repair work to be included on those machines:

- a. Presently under agreement and for a period up to ten years from date of sale of the machine to the Government by the Company if agreement is renewed each year at the then current yearly rate.
- b. Placed under agreement in the future, for a period up to ten years from date of sale of machine to the Government by the Company or five years from date of overhaul, whichever is longer, if agreement is renewed each year at the then current yearly rate.

After the expiration date of shop repair coverage as determined in items a. and b. above, when in the Company's opinion an overhaul becomes necessary, an itemized estimate covering parts and labor will be presented to the Government for approval before work is started. Those machines not requiring overhaul may be renewed each year at the then current yearly rate until cancelled by either party. However, any shop repair work or overhaul required will be at the Government's expense.

Maintenance Service covered by this agreement does not include:

Replacement or repair of burned out motors.

Ribbon replacement or application.

Repairs brought about by accident, fire, water, abuse or misuse.

Replacement of electric cords.

VICTOR BUSINESS MACHINES

ITEM 50-211 REPAIRING AND SERVICING

LABOR RATES	Con-	Zone	Zone	Zone
	tractors Office	1	2	3
(1) First one-half hour or less, (minimum charge)	\$7.00	\$7.00	\$11.25	\$18.25
(2) First full hour, per repairman	7.00	10.50	14.75	21.50
(3) Each additional full hour, per repairman	7.00	7.00	7.00	7.00
(4) Each additional 1/4 hour or fraction thereof, after one or more full hours, per repair- man	1.75	1.75	1.75	1.75

Add 20% to the above rates for the State of Alaska to cover higher labor.

ZONES

Zone 1—Machines located within a 10-mile area of service station or within the city limits of a city in which a service station is located, whichever is furthest.

Zone 2—Machines located beyond Zone 1 but within 25 miles of service station.

Zone 3—Machines located beyond Zone 2 but within 50 miles of service station.

PROVISIONS

Service will be rendered or machines will be picked up no later than the next scheduled working day after receipt of written or oral notice from the Government on machines located within the limits of Zone 1, of cities where Victor Adding Machine Co. Offices or Representatives are located and maintained. For machines located in Zones 2 and 3, service will be rendered or machines picked up no later than the second scheduled working day after receipt of written or oral notice from the Government.

For machines located beyond limits of Zone 3, servicing and repair will be rendered provided the machines are made available by the Government to, a Government establishment located within the limits of Zone 1, 2 or 3, or to the contractor's authorized service station.

Service on machines being rented by the Government must be rendered or machines exchanged no later than the next scheduled working day, after receipt of written or oral notice of breakdown, on machines located within the corporate city limits of cities where Victor Adding Machine Co. Offices or Authorized Representatives are located and maintained. For failure to render service or exchange machines within this time limit, the Government may deduct 1/30th of the monthly rental rate for each day the machine is inoperative.

Q U A L I T Y S I N C E 1 9 1 8

VICTOR BUSINESS MACHINES

Machines will be reconditioned and returned to Government agency within five (5) to sixty (60) days, contingent on quantity of machines involved, after receipt of order and availability of machines.

Overhaul and recondition work is guaranteed for a period of ninety (90) days. Minor repairs will be guaranteed for a period of thirty (30) days, applicable to the specific repair performed.

Charges for service will be computed on the basis of the time during which repairmen are actually engaged in work, regardless of whether repairs are performed at a Government office or in your shop. However, where repairs are ordered by a Government Department on two or more machines located in one or more buildings within walking distance of each other, the charges will be computed from the time the repairman commences work on the first machine until the work is completed on the last machine.

No extra charge, time or expense, will be allowed for transportation of either repairman or machine to or from a Government office.

When removal of a machine to your shop for repairs is necessary, you will be responsible for its damage or loss. A suitable or comparable loan machine, if required, will be supplied without additional cost during the duration of the repairs.

The rates cover work performed during regular established business hours, 8:00 A.M. to 5:00 P.M. Monday through Friday. No regular service will be rendered on Saturdays, Sundays and Holidays. If service is requested by the Government, at times other than established business hours outlined above, and is available, the rate charged will be 1-1/2 times the scheduled rates.

SALE OF PARTS

Item 50-106 Repair Parts for listing computing machines.

Item 50-237 Repair Parts for adding and subtracting machines.

Item 50-239 Repair Parts for listing adding machines.

This Item number covers sales of parts for installation by Government agencies repair department. Only new parts manufactured by the Victor Adding Machine Co. may be sold. A discount of 10% from the Victor Adding Machine Co. published or established list price must be given on all parts.

When invoicing Government Office, indicate item number shown on their Purchase Order.

20
10



VICTOR ADDING MACHINES

BASIC NATIONAL ACCOUNT POLICY

DEFINITION OF NATIONAL ACCOUNT

A Victor National Account is an important Victor customer or prospect who offers continuing potential and requires constant contacting, both sales and service, generally in more than one location.

QUALIFICATION FOR NATIONAL ACCOUNT STATUS

A firm who owns or controls 25 or more adding machines of all makes, either in one location or spread through branches or divisions of the company is eligible for National Account status. Signing of Application for National Account Rating (Form #661-19-5) is required for certification.

Without Application, the following group automatically are granted National Account status:

Municipalities	States	Charitable Organizations
Cities	Schools	Labor & Credit Unions
Counties	Churches	Federal Govt. (see pp. 107-8)

PROCEDURE FOR ESTABLISHMENT OF A VICTOR NATIONAL ACCOUNT

Any authorized agent of the National Account company signs the application for National Rating (Form #661-19-5). The signed application is mailed to the Victor Home Office with or without an order.

Listed on, or attached to the application, must be shown all of the locations of the company's branches or affiliated organizations, and whether or not such branch or affiliate is authorized to issue their own purchase order.

NATIONAL ACCOUNT DISCOUNT

An authorized National Account is granted a 10% discount on purchase of Victor Adding Machines.

Strict adherence to the 10% discount is required.

TRADE-IN MACHINES ON NATIONAL ACCOUNT SALES

Trade-in price quotation should be based on the Victor Standard Allowance Schedule (Product and Price Manual) and care must be taken that consistency in trade-in quotations be maintained throughout our organization and tying in with our far flung National Accounts with whom we constantly maintain contact at their Headquarters location.

The Victor Representative picking up the trade-in from the customer (usually the installer) retains it and is charged the allowance schedule price. Over-allowance is charged to the selling location, that is the location which quoted the trade-in price.

In rare instances the selling branch or dealer may request special handling of the trade-in machine. In these cases shipping costs are charged to the account of the selling branch or dealer.

All trade-ins accepted on an "as is" condition.

VICTOR ADDING MACHINES

RULES AND REGULATIONS IN NATIONAL ACCOUNT HANDLING

1. PURCHASE ORDERS

Purchase Orders for National Account and Authorized Discount Organizations must show delivery instructions in all cases of outside installation. Whenever possible Purchase Orders should be written to Victor Adding Machine Co. or:

Victor Adding Machine Co.
C/O Dealer's Name
Address
City, State

Victor Adding Machine Co. will then handle billing, shipping, delivery, collection and proper commission or earnings credit based on Purchase Order.

2. DISCOUNT HANDLING

Discounts granted to Authorized National Accounts are to the account of the Victor branch or dealer.

3. INTER-TERRITORIAL SALES AND DELIVERIES

Volume and earnings are divided equally on inter-territorial sales— $\frac{1}{2}$ to the Seller and $\frac{1}{2}$ to the Installer. Discount granted is deducted from total commission available and the balance is divided 50-50 per above.

Three way splits may occur in which case a third location, in addition to the Selling and Installing location, becomes involved on approval or certification of an order. Eligibility for participation depends upon prior information to the Home Office National Accounts Department or specific request for assistance of the third party by the Seller or Installer. The Installing location always is granted half commission.

Representatives handling the Headquarters of a National Account are entitled to split consideration if the Purchase Order is written, released and processed from the Headquarters location despite the fact that the Purchase Order is mailed to an Installing Location for local handling. Purchasing authority data in Victor Home Office will determine validity of split claims. Claims of this type must be made at the time the order is handled through the controlling Headquarters.

Inter-territorial deliveries are always handled by shipment to or request for installation by the Victor Representative in whose territory installation is to be made. Deliveries of National Account orders are made on a prepaid basis.

4. CHARGEBACK LIABILITY

Orders processed by Victor Adding Machine Co. from Purchase Orders on which collection or repossession cannot be made will be subject to commission chargeback.



STANDARD ALLOWANCE SCHEDULE EFFECTIVE FEBRUARY 1, 1962

Subject to Change Without Notice

The following schedule has been prepared for the guidance of Victor Representatives, for use in Continental United States, including Alaska and Hawaii.

The following provisions apply:

1. The trade-in value of used machines should be adjusted downward if the local market situation so warrants.
2. Only one trade-in accepted on purchase of new machine.
3. No extra allowance for special features.
4. Machines of old vintage not listed carry no allowance.
5. Any other machines not listed have trade-in valuation at resale wholesale value in town where trade-in is located.
6. Typewriters, dictating machines, etc. are not accepted as a trade-in on Victor Comptometer machine sales.
7. If a trade-in has missing parts, or is damaged by fire, water or improper handling, schedule must be reduced by cost of putting equipment in operating condition.
8. Machines on which serial number has been removed or changed, not accepted.
9. Electric machines must be 110-115 A.C. or Universal. Deduct \$5.00 for trade-ins equipped with D.C. motors.
10. Retail order must completely describe trade-in equipment, conforming to description in this schedule. If any question as to value, Home Office will use lowest allowance.
11. On machines with plastic cases which are cracked or broken—
Hand Models — Deduct \$10.00.
Electric Models — Deduct \$15.00.
12. Trade-in value of mechanically inoperative machines is to be determined at local branch level.

Note: When determining trade-in value, "column" means listing capacity.



VICTOR BUSINESS MACHINES CO.

ADDING MACHINE ALLOWANCES

VICTOR

100-300-500 LINE	HAND		ELECTRIC	
	Columns		Columns	
	5-6-7	8-10	5-6-7	8-10
Below 165,000	\$ 5.00	\$ 5.00	\$10.00	\$15.00
165,000 to 400,000 ...	7.50	10.00	15.00	20.00
Over 400,000	10.00	15.00	20.00	20.00
Add \$5.00 for Direct Subtraction.				
Deduct \$15.00 for Wide Carriage.				
Deduct \$10.00 for Fractions.				

6 & 7 LINE	HAND		ELECTRIC (Subtractors)	
	Columns		Columns	
	5-6-7	8	5-6-7	8
Below 600,000 ('48) ..	\$15.00	\$20.00	\$30.00	\$40.00
600,000 to 1,100,000 ('55)	20.00	25.00	35.00	50.00
Above 1,100,000	25.00	30.00	45.00	55.00
Add \$5.00 for Credit Balance.				
Add \$5.00 for Direct Subtraction on Hand Models.				
Deduct \$5.00 for Full Keyboard.				

Custom Line	HAND		ELECTRIC	
	Columns		Columns	
	8	10	8	10
Below 874,000	\$30.00	\$35.00	\$50.00	\$55.00
874,000 to 1,500,000 ..	35.00	40.00	60.00	65.00
Above 1,500,000	40.00	45.00	65.00	70.00
Add \$5.00 for Credit Balance.				
Add \$10.00 for AT feature.				
Deduct \$5.00 for Full Keyboard.				

Comptograph

All Electric Models\$60.00

ADDO-X

Hand, 7 or 8 Column\$20.00
 Hand, 10 Column 25.00
 Add \$5.00 for Direct Subtraction.
 Add \$10.00 for Electric.

R. C. ALLEN

Any Model — Below 825,000\$ 5.00
 Hand Adder 15.00
 Hand Subtractor 20.00

EFFECTIVE: FEB. 1, 1962

PTD. 2-62

PRECISION PRODUCTS SINCE 1889



VICTOR BUSINESS MACHINES CO.

R. C. ALLEN (Continued)

Electric Subtractor	\$25.00
Add \$10.00 for 10-Key Keyboard.	
Statement Model #1050 1055	
10- Key machine, Hand	\$20.00
10-Key machine, Electric	25.00

ALLEN WALES

(See National)

BARRETT

All Models	\$ 5.00
------------------	---------

BURROUGHS

(Note: Serial Numbers change at 1,500,000 to A1, and at A990M to B1.)

Class 100, 200 and 600 (All Models).....	No Value
Class 300, 400 (All Models).....	\$ 5.00
Class 8, 9, or 10, Hand, Non-Subtract	
4, 5, 6 Column	5.00
8, 10 Column, Below A700,000.....	10.00
Above A700,000.....	15.00

For Electric Operation Add.....	10.00
---------------------------------	-------

"B" Series

All Adders	5.00
All Hand Subtractors	20.00
For Electric Add.....	10.00

Class P Models—Electric

8 Column	50.00
10 Column	60.00

Add \$5.00 for Credit Balance

Class J Model—Any Serial

7 - 8 Column.....	40.00
10 Column	55.00

Add \$5.00 for Credit Balance.

CLARY

All Hand	\$20.00
All Electric	35.00

CORONA

Models 6, 7, 8 or 9.....	\$ 5.00
6K	5.00
8K	10.00
10K	15.00
All other models	20.00

EFFECTIVE: FEB. 1, 1962

PTD. 2-62

PRECISION PRODUCTS SINCE 1889



VICTOR BUSINESS MACHINES CO.

EVEREST

Electric\$30.00

MONROE

(OLYMPIA)

Full Keyboard Model, any capacity.....\$15.00

For Electric Add..... 5.00

For Subtraction Add 5.00

DuplexNo Extra Value

10 Key, Hand Subtractor..... 35.00

10 Key, Electric Subtractor

8 Column 45.00

10 Column 55.00

Deduct \$5.00 for models 300 and prior.

NATIONAL

(ALLEN WALES)

6 Column 7-8 Column 10 Column

Adders\$10.00 \$15.00 \$20.00

Hand Subtractors 20.00 — —

Electric Subtractors — 30.00 35.00

Add \$5.00 for Credit Balance.

Allen Wales models deduct \$5.00.

ODHNER

8, 10 Column, Hand Adder.....\$20.00

8, 10 Column, Hand Subtract..... 30.00

8, 10 Column, Electric Subtract..... 40.00

OLIVETTI

Hand Subtractor\$25.00

8 Column, Electric Subtractor..... 50.00

10 Column, Electric Subtractor..... 60.00

Add \$5.00 for Credit Balance.

PRECISA

8 Column Electric, 10 Key Credit Balance.....\$25.00

10 Column Electric, 10 Key Credit Balance..... 40.00

REGNA

Hand, Any Model\$20.00

Electric, Any Model 30.00

REMINGTON RAND

Hand Operated 5-6 Col. 7-8 Col. 9-10-11-13 Col.

Below 413,000\$10.00 \$10.00 \$10.00

413,001 to 698,000 10.00 10.00 10.00

698,001 to 1,000,000 ... 15.00 15.00 15.00

Over 1,000,000 20.00 20.00 20.00

Add \$5.00 for Subtractors.

Add \$5.00 for Credit Balance.

Add \$10.00 For Electric Operation.

Deduct \$15.00 for Wide Carriage.

EFFECTIVE: FEB. 1, 1962

PTD. 2-62

PRECISION PRODUCTS SINCE 1889



VICTOR BUSINESS MACHINES CO.

REMINGTON RAND (Continued)

Metal Case	
Adder	\$10.00
Hand Subtractor	15.00
Electric Subtractor	20.00

SMITH CORONA

Model 7M and 8MA.....	\$15.00
Electric	40.00

SUNDSTRAND-UNDERWOOD

Heavy Duty Model with Stand.....	No Value
Other Models	360,001 653,001
	To to to 776,001
	360,000 653,000 776,000 Up
6, 7 Column	\$10.00 \$10.00 \$15.00 \$20.00
8, 9 Column	15.00 15.00 20.00 25.00
10, 11 Column	15.00 15.00 20.00 30.00
13 Column	20.00 20.00 25.00 30.00
For Subtraction Add	\$ 5.00
For Electric on Machines above 360,000 only Add...	10.00
For Multiply Bar Add.....	5.00
Duplex Models, Below 653,000.....	20.00
Above 653,000.....	25.00
Statement Models, Below 653,000.....	10.00
Above 653,000.....	25.00
Add Mate	30.00
Metal Case	
Adders	5.00
Hand Subtractors	10.00
Side Motor Electric	15.00

SWIFT

Any Serial	\$10.00
------------------	---------

FRIDEN

All Models	\$50.00
------------------	---------

GENERAL

All Models	\$17.50
------------------	---------

JOHNSTON

All Models	\$30.00
------------------	---------

MARCHANT

All Models	\$40.00
------------------	---------

NO VALUE —

ADD-INDEX

DALTON

WALES

EFFECTIVE: FEB. 1, 1962

PTD. 2-62

PRECISION PRODUCTS SINCE 1889



VICTOR BUSINESS MACHINES CO.

CALCULATOR ALLOWANCES

VICTOR

	75-85-54	74-85-54	73-85-54	72-85-54
Under 1,300,000\$200.00	\$125.00		
Above 1,300,000	... 250.00	150.00	\$175.00	\$150.00

COMPTOMETER

	8 Col.	10 & 12 Col.
H\$ 5.00	\$ 5.00
J & K 10.00	15.00
M under 430,000 30.00	35.00
WM 430,000 to 450,000 20.00	25.00
M under 450,000 35.00	40.00
3D11 & 992 70.00	75.00

R. C. ALLEN

Hand Model No. 10\$ 5.00
Electric No. 30 10.00
Electric No. 35 25.00

BURROUGHS

(Serial numbers change at
1,500,000 to A1 and at A990 to B1)

	MANUAL		ELECTRIC	
	Simplex & Duplex			
	9 Col.	13 Col.	9 Col.	13 Col.
Below 700,000\$ 5.00	\$ 5.00		
700,000 to 1,500,000	.. 5.00	5.00	\$ 5.00	\$ 5.00
A1 to A500,000 7.50	7.50	5.00	5.00
A400,000 to A700,000	15.00	15.00	25.00	25.00
A700,000 to B Series	25.00	25.00	50.00	32.50
B&C Series	30.00	30.00	75.00	55.00

FACIT

Hand Models\$10.00
NEA, Electric 40.00
ESAO, Electric (fully automatic) 55.00

FRIDEN

A, B, C, D, F & H Electric Green Case\$ 5.00
S8 & S10 Electric Green Case 25.00
C8, C10, D8 & D10 35.00
CW, DW, Electric Gray Case 8 & 10 Col. 75.00
S8, S10, Electric Gray Case Below 110,000 85.00
S8, S10, Electric Gray Case Above 110,000 95.00
ST8 Electric Gray Case 100.00

EFFECTIVE: FEB. 1, 1962

PTD. 2-62

PRECISION PRODUCTS SINCE 1889



FRIDEN (Continued)

ST10 Electric 100,000 to 150,000	100.00
ST10 Electric 150,000 to 200,000	110.00
ST10 Electric Above 200,000	140.00
CW8, CW10, DW8 & DW10	90.00
S, W8, & STW10 Electric Brown Case	
Below 450,000	140.00
Above 450,000	185.00
ACG Electric Brown Case	200.00

MARCHANT

Hand Models	No Value
All D, E, K Models, Electric	No Value
8D, 10D, below 125,000	\$ 15.00
above 125,000	25.00
ACR-8D, ACR-10D to 200,000	30.00
above 200,000	40.00
8M, 10M, below 115,000	35.00
above 115,000	40.00
8DR	50.00
10DR	60.00
CR-8M, CR-10M	65.00
CT-8M, CT-10M	70.00
8SD, 10SD	75.00
8DTR, 10DTR	80.00
ACR-8M, ACR-10M to 230,000	85.00
above 230,000	90.00
ACT-10M to 230,000	95.00
above 230,000	100.00
8SDX, 10SDX, below 340,000	110.00
above 340,000	125.00
8ADX & 10ADX	150.00
8FA, 10FA, below 340,000	125.00
above 340,000	140.00
8EFA & 10EFA, below 400,000	140.00
above 400,000	150.00

MONROE

Models D, E, F, G, K, Hand	\$ 5.00
KA, KAA, KAS, KASC, Electric	5.00
A1-213, AA1-213, Electric	10.00
L160, L200, Electric	15.00
L1307, LE1307S, LE1307, LA1307	15.00
LX160, LX200, LN160, LN200, Hand	25.00
LA5-160, LA5-200, Electric	30.00
LA6, Electric	45.00

EFFECTIVE: FEB. 1, 1962

PTD. 2-62

PRECISION PRODUCTS SINCE 1889

MERCHANT (Continued)

8DTR, 10DTR	80.00
ACR-8M, ACR-10M to 230,000.....	85.00
above 230,000.....	90.00
ACT-10M to 230,000	95.00
above 230,000.....	100.00
8SDX, 10SDX, below 340,000.....	110.00
above 340,000.....	125.00
8DRX	100.00
10DRX	110.00
8FA, 10FA, below 340,000.....	125.00
above 340,000.....	140.00
8EFA, 10EFA, below 340,000.....	140.00
above 340,000.....	150.00

MONROE

Models D, E, F, G, K, Hand.....	\$ 5.00
KA, KAA, KAS, KASC, Electric.....	5.00
A1-213, AA1-213, Electric.....	10.00
L160, L200, Electric	15.00
L1307, LE1307S, LE1307, LA1307.....	15.00
LX160, LX200, LN160, LN200, Hand.....	25.00
LA5-160, LA5-200, Electric	40.00
LA6, Electric	50.00
LA160, LA200, LA160X, LA200X, Electric.....	35.00
M170, M213, Hand	5.00
M-3-170, M-3-213, Hand	5.00
MA-170, MA-210, Duplex Electric.....	5.00
MA-163, MA-213, Electric.....	5.00
MA-3-173, MA-3-213, Electric.....	5.00
MA-4-173, MA-4-213, Electric.....	10.00
MA-5-173, MA-5-213, Electric.....	10.00
MA-6-173, MA-6-213, Electric.....	15.00
MA-7-173, MA-7-213, Electric.....	20.00
MA-7-173, MA-7-213, Electric, below 400,000.....	30.00
above 400,000.....	40.00
MA-7-173-W-3-S, MA-7-213-W-3-S, Electric	50.00
CS-8, CS-10, Electric	70.00
CST-8, CST-10, Automatic Division.....	75.00
CSA-8, CSA-10, Electric, Automatic Division and Multiplication	85.00
CAA-8, CAA-10, Fully Automatic	100.00

EFFECTIVE: JAN. 11, 1960

PTD. 1-60

Q U A L I T Y S I N C E 1 9 1 8

VICTOR ADDING MACHINES

OLIVETTI

MC14 Style	\$100.00
Divisumma 24	175.00
Tetractys (Duplex)	225.00
MC22	75.00

REMINGTON RAND

Model 96	\$ 50.00
Model 97 (Two Speed).....	70.00
Model 98, Below 1,100,000.....	100.00
Above 1,100,000.....	125.00
Model 99, Below 1,100,000.....	150.00
Above 1,100,000.....	175.00
DX	100.00

UNDERWOOD

Any Model	\$65.00
-----------------	---------

EFFECTIVE: JAN. 11, 1960

PTD. 1-60

Q U A L I T Y S I N C E 1 9 1 8



ADDING MACHINE AGE LIST

VICTOR

1-3 & 5 LINE

YEAR	Serial No. (Thousands)	YEAR	Serial No. (Thousands)
1921	2	1940	286
1922	6	1941	294
1923	23	1942	311
1924	47	1943	319
1925	65	1944	325
1926	90	1945	335
1927	115	1946	349
1928	129	1947	370
1929	151	1948	395
1930	176	1949	5-419
1931	189	1950	5-434
1932	197	1951	5-445
1933	201	1952	5-459
1934	207	1953	5-473
1935	216	1954	5-479
1936	230	1955	5-482
1937	246	1956	5-489
1938	266	1957	5-493
1939	277		

6-60-61 & 7-70-71

1940	400,000	1949	639,178
1941	411,000	1950	699,641
1942	444,601	1951	777,509
1943	467,501	1952	876,576
1944	Production of Portable Suspended	1953	957,440
1945	474,000	1954	1023-000
1946	478,007	1955	1104-000
1947	505,035	1956	1174-000
1948	553,627	1957	1259-000

PORTABLE MACHINES

The first portables produced had the date of manufacture incorporated in the serial number. The first numeral indicated the year, the last two numerals the month. For example:

9 / 2342 / 12 - Dec. 1939
 0 / 2342 / 08 - Aug. 1940

This method was discontinued in August 1940 in favor of a straight numerical system.

EFFECTIVE: FEB. 1, 1962

PTD. 2-62

PRECISION PRODUCTS SINCE 1889



VICTOR
COMPTOMETER
AGE LIST

Year	Model	Serial No.
1915.....	F	100,000
1920.....	H	200,000
1926.....	J	246,000
1934.....	K	350,000
1943.....	AK	377,000
1939.....	M	400,000
1942.....	WM	430,000
1946.....	IM	462,000
1950.....	992	5,000
1950.....	3D11	6,400
1955.....	99C	26,000
1957.....	616	5,000

COMPTOGRAPH

1955	75,000
1957	84,000

VICTOR ADDING MACHINES

ADDING MACHINES— CALCULATORS AGE LISTS

(Calculator and adding machine serial numbers intermixed.)

Year	Burroughs	Remington-Rand	Underwood- Sundstrand
1920	569,591		14,036
1921	724,322		27,601
1922	746,492		28,501
1923	809,543		36,601
1924	888,301		54,526
1925	919,377		70,701
1926	991,700		86,601
1927	1,078,578		110,601
1928	1,178,975		136,001
1929	1,296,798		140,001
1930	1,303,382		158,001
1931	1,441,997		178,001
1932	1,465,876		205,001
1933	A-1	18,000	210,001
1934	A-17,613	40,000	213,101
1935	A-57,147	65,000	221,401
1936	A-104,086	90,000	235,801
1937	A-172,686	120,000	275,001
1938	A-230,211	167,000	289,001
1939	A-277,669	195,200	293,001
1940	A-328,129	222,700	325,001
1941	A-386,476	256,700	340,001
1942	A-444,349	299,400	355,001
1943	A-518,560	326,100	372,001
1944	A-546,786	341,900	423,001
1945	A-567,738	363,800	451,001
1946	A-602,325	399,901	475,001
1947	A-668,694	461,597	506,001
1948	A-753,547	550,000	550,901
1949	A-876,400	675,000	594,201
1950	A-951,448	730,200	644,201
1951		834,500	709,001
1952	B-267,400	938,000	774,901
1953	B-298,250*	1,043,600	830,101
1954	*	1,110,000	873,001

* Burroughs "P" series started in 1953.
1953—P 1,000, 1954—P 88,000.

VICTOR ADDING MACHINES

CALCULATOR AGE LIST

Approx. Age	Friden F 10 FT 10 STW 10	Friden D 10 DS 10 B	Friden D 10 DS 10 B 10	Friden D 8 DS 8 CW 10	Friden ST 10 SW 10	Friden C 10 DW 10	Friden C 8 SW 8	Friden F 8 FT 8 STW 8	Friden S 10 SRW 10	Friden S 8 DW 8	Friden ST 8 CW 8
1934			10,001								
1935			11,001								
1936			26,001	16,000		40,001	35,001	70,001	85,001		
1937	75,000		26,125	16,347		40,200	35,180	70,300	85,009	80,001	
1938	77,000		26,443	17,000		42,200	38,000	72,000	85,769	80,095	
1939	78,000		26,803	19,000		42,600	38,611	72,911	100,000	90,000	
1940	78,270		250,000	203,000		50,000	40,000	73,000	107,000	95,000	95,000
1941	79,000		255,001	206,000		51,000	41,000	74,000	108,000	96,076	96,000
1942	79,023		250,150	209,000		51,700	41,900	74,250	109,000	96,742	97,000
1943	79,290		256,000	211,000		52,000	42,000	74,319	110,000	97,000	97,330
1944	79,490		258,000	213,000		52,690	43,000	74,351	110,530	97,330	98,000
1945	79,549		260,000	214,000		53,000	44,000	74,439	112,000	100,082	105,000
1946	79,632		262,000	216,000		54,000	45,000	74,499	120,000	100,642	107,000
1947	79,718		263,000	219,000		55,000	46,000		120,900	101,000	108,000
1948			264,000	222,000		56,000	48,000		121,500	102,000	111,000
1949	2,001		265,000	2,001		58,000	50,000	2,001	121,963	103,000	112,000
1950	440,000		266,000	70,000		270,000	150,000	330,000	122,300	280,000	80,000
1951	450,000			71,000		270,739	700,000	331,000	122,668	281,000	81,000
1952	480,000			72,000		272,000	703,000	332,000	875,001	283,000	82,000
1953	500,190			72,870		273,000	707,000	333,000	875,495	285,000	83,000

MISCELLANEOUS

MISCELLANEOUS

MISCELLANEOUS
INFORMATION

VICTOR ADDING MACHINE CO.

THE UNIVERSITY OF CHICAGO

PHYSICS DEPARTMENT
5712 S. UNIVERSITY AVE.

CHICAGO, ILL. 60637

VICTOR ADDING MACHINES

CREDIT POLICY FOR ADDING MACHINES, X-MODEL CASH REGISTERS, AND CALCULATORS

(For remaining Cash Registers, Credit Registers, Safes and Printing Products, use Systems Catalog. For leases, see "Basic Victor Leasing Policy and Program.")

Terms best suited to the customer's needs and ability to pay should be determined at the time of order. Victor Business Machines Co. will expect payment promptly and strictly according to terms of the sale.

I. Regular Terms—no carrying charge.

A. Full cash with order.

B. Net 30 days after delivery.

C. Net ½-30 days, ½-60 days after delivery.

D. 25% down, balance 1/3-30 days, 1/3-60 days, 1/3-90 days after delivery. Trade-in can apply toward down payment; difference must be paid in cash if trade-in is less than required down payment.

II. Installment Terms—subject to carrying charges.

A. Installment contracts handled by:

1. Local bank. Branches having local financing arrangements, on orders with "cash price balance" over \$100, with the customer located within the bank-financed area.

2. Home Office. All orders from branches without local financing arrangements, and orders with "cash price balance" under \$100 from branches having local financing arrangements.

B. Requirements on all installment contracts:

1. Down payment.

a. 10% or more, on total "balance" if there is no trade-in.

b. 5% or more, on "total" before trade-in if there is a trade-in machine.

c. Rental credit does not apply as down payment.

2. Carrying charges.

a. Local bank financed orders—use bank rate chart.

b. Home Office installment orders—½% per month.

(Ptd. 12-61)

VICTOR ADDING MACHINES

3. Payments.

- a. Minimum \$10 per month.
- b. "Sum total" divided into equal monthly payments. Any difference to be included in first monthly payment.
- c. Number of payments.
 1. 4 to 18 months on cash price balance under \$300.
 2. 4 to 24 months on cash price balance over \$300.

III. Business References and general credit information are required on all orders, except the following:

A. Bank, insurance company, large hotel, financial institution, charitable organization, trade union, Federal Government agency, State Municipality, or otherwise established institution of recognized financial stability, not normally listed by D & B.

B. Orders on which a cash down payment of at least 25% of the "cash price balance" is collected, balance net 30 days.

C. D & B listed or rated orders:

1. Up to \$700, D & B listed regardless of rating.
2. From \$701 to \$1200, D & B rating G3 or higher.
3. From \$1201 to \$3000, D & B rating E2½ or higher.
4. Over \$3001, D & B rating B2 or higher.

D. Repeat customers who have purchased within past two years. Show Invoice or Branch Order number.

IV. Change of Terms orders.

A. Conversion from Net 30, Net 30-60, and 30-60-90 days to an installment contract.

1. Down payment of 10% or more, with conversion order if within 60 days after original invoice date.
2. Down payment of 20% on conversion order between 60 and 90 days after original invoice date.
3. Down payment of 30% on conversion order over 90 days after original invoice date.
4. Remaining requirements same as in Section II.

MISCELLANEOUS INFORMATION

Coding for Type of Business & Channel
of Trade to be Used in Writing Up Orders

Code	Type of Business	Code	Type of Business
	Miscellaneous		Service (continued)
1	Mining & Quarrying	21	Laundry & Cleaning
2	Transportation—Rail	22	Clubs, Hotels, & Associations
3	" —Air	23	Repair (Shoe, Auto., General)
4	" —Truck & Taxi	24	Entertainment, (Bowling, etc.)
5	" —Boat	25	Photography - Printing - Lithography
6	Public Utilities	26	Service Station, Coal, Fuel & Ice
7	Communications—Radio	27	Construction - Contractor & Engineer
8	Personal	28	Insurance and Banks
	Retail	29	Miscellaneous Service
10	Food		Wholesale
11	General Merchandise	30	Food - Packers & Prod.
12	Apparel	31	Apparel
13	Furniture & Appliances	32	Furniture & Appliances
14	Hardware & Sport Goods	33	Drug - Liquor - Candy - Cigar
15	Drug, Liquor, Candy & Cigar	35	Coal - Fuel - Ice - Oil
16	Automotive	36	Hardware & Machinery
17	Eating and Drinking	39	Misc. Wholesale
19	Miscellaneous		
	Service		
20	Financial—Realty—Advertising		

(continued on next page)

VICTOR ADDING MACHINES

Code Type of Business

Government

- 40 State
- 41 County
- 42 Municipal
- 43 Federal
- 44 Post Offices
- 49 Misc. Government

Institutions

- 50 Schools
- 51 Hospitals & Clinics
- 52 Churches
- 53 Libraries
- 59 Misc. Institutions

Manufacturing

- 60 Food
- 61 Textile & Apparel

Code Type of Business

Manufacturing (cont.)

- 62 Drug, Paint, Chemical
- 63 Lumber and Furniture
- 64 Printing - Paper & Pulp
- 65 Leather & Rubber
- 66 Iron - Steel - Metal
- 67 Auto & Machinery
- 68 Jewelry
- 69 Misc. Manufacturing

Professional

- 70 Physicians
- 71 Dentists
- 72 Lawyers
- 73 Accountants
- 74 Morticians
- 75 Teachers
- 76 Farmers
- 79 Misc. Professional



VICTOR ADDING MACHINES

CALCULATOR COMPETITIVE PRICE LIST

Model	Hand- Elec.	Capacity Total - List	List Price	Ex. Tax
-------	----------------	--------------------------	---------------	------------

Burroughs - (Two Tone)

C-101	H	5 - 6	188.00	11.28
C-103	H	9 - 10	425.00	25.50
C-203	E	9 - 10	682.00	40.92
C-303D	E	9 - 10	919.00	55.14
C-105	H	13 - 14	532.00	31.92
C-205	E	13 - 14	800.00	48.00
C-305D	E	13 - 14	1006.00	63.96

Clary

401	E	10 - 11	595.00	35.70
-----	---	---------	--------	-------

Felt & Tarrant Comptometer

3D11-8	H	8 - 9	550.00	33.00
3D11-10	H	10 - 11	635.00	38.10
3D11-12	H	12 - 13	720.00	43.20
99C-8	E	8 - 9	604.00	36.24
99C-10	E	10 - 11	710.00	42.60
99C-12	E	12 - 13	816.00	48.96
98FD11	H	10 - 11	710.00	42.00
98FD11	H	12 - 13	795.00	47.00
68SD11	H	10 - 11	710.00	42.00
68SD11	H	12 - 13	795.00	47.00
3D11	H	5 - 6	265.00	15.00
M	H	20 - 21	1150.00	69.00
IMS	H	10 - 11	791.00	47.00
IMS	H	12 - 13	901.00	54.00
Dual-Action Models 98F92 or 68S92				
	E	10 - 11	785.00	47.00
	E	12 - 13	892.00	53.00
Customatic Model				
	H	7 - 8	635.00	38.10
	H	9 - 10	735.00	44.10
	H	11 - 12	835.00	50.10

QUALITY SINCE 1918

VICTOR ADDING MACHINES

CALCULATOR COMPETITIVE PRICE LIST (Contd.)

Model	Hand- Elec.	Capacity	List Price	Ex. Tax
Plus				
906M	H	6 - 7	275.00	16.50
909M	H	9 - 10	475.00	28.50
912M	H	12 - 13	580.00	34.80
909ES	E	9 - 10	550.00	33.00
912ES	E	12 - 13	660.00	39.60
909ED	E	9 - 10	780.00	46.80
912ED	E	12 - 13	910.00	54.60

Special Models: Foreign currency keyboards, fractions, time and weight keyboards, etc. add \$30.00 to list price.

Friden

SRW	E	20x11x10	1300.00	78.00
ACG	E	20x11x10	950.00	57.00
STW-10	E	20x11x10	850.00	51.00
SW-10	E	20x11x10	725.00	43.50
CW-10	E	20x11x10	595.00	35.70
HW-10	H	20x11x10	350.00	21.00
STW-8	E	17x9x8	790.00	47.40
SW-8	E	17x9x8	665.00	39.90
CW-8	E	17x9x8	525.00	31.50
DW-8	E	17x9x8	475.00	28.50
HW-8	H	17x9x8	300.00	18.00

Marchant

10EFA	E	20x10x10	865.00	51.90
8EFA	E	16x8x8	785.00	47.10
C10EFA	E	20x10x10	890.00	53.40
AB-10-FA	E	20x10x10	835.00	50.10
8-ADX	E	16x8x8	655.00	39.30
8-TD	E	16x8x8	475.00	28.50
10-ADX	E	20x10x10	735.00	44.10
10-TD	E	20x10x10	540.00	32.40
8-DE	E	8x8x16	440.00	26.40

QUALITY SINCE 1918

VICTOR ADDING MACHINES

CALCULATOR COMPETITIVE PRICE LIST (Contd.)

Model	Hand- Elec.	Capacity	List Price	Ex. Tax
-------	----------------	----------	---------------	------------

Marchant (Contd.)

SKA	E	10x11x20	985.00	59.10
10MR	E	30x30x60	2950.00	
10EFA Braille	E	10x10x20	985.00	59.10
C10ADX	E	10x10x20	760.00	45.60
(Split Clearance in Middle Dial)				
8DX	E	8x8x16	575.00	34.50
8RX	E	8x8x16	565.00	33.90
CAB10FA	E	10x10x20	860.00	51.60
CA10DX-X	E	10x20x10	835.00	50.10
S8ADX	E	8x8x16	655.00	39.30
8-DE	E	8x8x16	475.00	28.50
8-DCR	E	8x8x16	525.00	31.50
10-DCR	E	10x10x20	595.00	35.70
Extra Dial 11th Upper Dial on Any 10 col. Model			25.00	1.50

Monroe

LN-160X	H	16x8x8	275.00	16.50
LN-160	H	16x8x8	300.00	18.00
LN-200	H	20x10x10	350.00	21.00
LA5-200	E	10-20-10	410.00	24.60
LA7-160	E	16x8x8	385.00	23.10
LA7-200	E	20x10x10	445.00	26.70
CS-8	E	8x16x8	475.00	28.50
CST-8(4N4-162)	E	8x16x8	525.00	31.50
CST-10(4N4-212)	E	10x20x10	595.00	35.70
CSA-8	E	8x16x8	665.00	39.90
CSA-10	E	20x10x10	725.00	43.50
CAA-10	E	10x20x10	800.00	48.00
6N-162	E	8x16x8	685.00	41.10
6N5-162	E	8x16x8	765.00	45.90
6N-212	E	10x21x11	745.00	44.70
6N5-212	E	10x20x10	825.00	49.50

QUALITY SINCE 1918

VICTOR ADDING MACHINES

CALCULATOR COMPETITIVE PRICE LIST (Contd.)

Model	Hand- Elec.	Capacity	List Price	Ex. Tax
-------	----------------	----------	---------------	------------

Monroe (Contd.)

8N-213	E	10x21x11	850.00	51.00
8N-1-213	E	10x21x11	980.00	57.00
66N-213	E	10x21x11	1075.00	64.50
8N-173	E	8x17x9	790.00	47.40
88N-213	E	10x21x11	1290.00	77.40

Multo

3	H	13x10x8	140.00	8.40
13	H	13x10x8	160.00	9.60
103	H	13x10x8	195.00	11.70
113	H	13x10x8	215.00	12.90

Facit

NTK (C1-13)	H	8-9-13	215.00	12.90
C1-19	H	10-10-19	295.00	17.70
NE	E	8-9-13	275.00	16.50
CS1-13	E	8-9-13	395.00	23.70
CA1-13	E	8-9-13	525.00	31.50
H954	H	9x9	169.00	10.14
H1154	H	10x11	189.00	11.94

Original - Odhner

207	H	10x8x13	130.00	7.80
227*	H	10x8x13	145.00	8.70
229**	H	10x8x13	185.00	11.10

*With backtransfer.

**With backtransfer and 10's carry-over.

QUALITY SINCE 1918

VICTOR ADDING MACHINES

CALCULATOR COMPETITIVE PRICE LIST (Contd.)

Model	Hand- Elec.	Capacity	List Price	Ex. Tax
Olivetti				
OPC	E	10 - 11	600.00	33.00
ACPC	E	10 - 11	940.00	51.70
Divisumma 24	E	10 - 11	675.00	37.13
Tetractys (2Reg.)	E	10 - 11	875.00	48.13
Audit 202	E	10 - 11	1150.00	63.25
Remington				
9x94	E	10 Cr. Bal.	475.00	28.50
98100	E	10 Cr. Bal.	525.00	31.50
98100-W13	E	10 Cr. Bal.	579.00	34.74
98100-W13B	E	10 Cr. Bal.	633.00	37.98
99120*	E	11 - 12	685.00	41.10
99140*	E	13 - 14	785.00	47.10

* Completely Automatic

Underwood - Sundstrand

10140PC	E	10	500.00	30.00
---------	---	----	--------	-------

QUALITY SINCE 1918

VICTOR ADDING MACHINES

ADDING MACHINE COMPETITIVE PRICE LIST

Model	Hand- Elec.	Oper.	Capacity List - Total.	List Price	Ex. Tax
Addo-X					
40	H	D.S.	9 - 9	208.00	In. Ex. Tax
41	H	D.S.	10 - 11	234.00	In. Ex. Tax
42	H	D.S.	8 - 8	186.00	In. Ex. Tax
40E	E	D.S.	9 - 9	335.00	In. Ex. Tax
41E	E	D.S.	10 - 11	367.00	In. Ex. Tax
341	H	C.B.	10 - 11	277.00	In. Ex. Tax
341E	E	C.B.	10 - 11	405.00	In. Ex. Tax
345E	E	C.B.	8 - 9	362.00	In. Ex. Tax
341ESC	E	D.S.	10 - 11	527.00	In. Ex. Tax
241EHC	E	D.S.	10 - 11	549.00	In. Ex. Tax
241E	E	C.B.	10 - 11	442.00	In. Ex. Tax
341EHC	E	D.S.	10 - 11	512.00	In. Ex. Tax
42E	E	D.S.	8 - 8	314.00	In. Ex. Tax
7341EF	E	C.B.	10 - 11	1374.00	In. Ex. Tax
541E	E	C.B.	10 - 11	489.00	In. Ex. Tax
7341-EFP	E	C.B.	10 - 11	1557.00	In. Ex. Tax

R. C. Allen

56-S	H	D.S.	5 - 6	130.00	8.45
65	H	D.S.	6 - 6	147.50	8.83
67	H	D.S.	6 - 7	130.00	8.45
70	H		7 - 7	155.00	9.30
75	H	D.S.	7 - 7	175.00	10.50
715	E	D.S.	7 - 7	275.00	16.50
5089**	H	C.B.	8 - 9	185.00	11.10
805	H	D.S.	8 - 8	195.00	11.70
815	E	D.S.*	8 - 8	300.00	18.00
905	H	D.S.	9 - 9	240.00	14.40
915	E	D.S.*	9 - 9	340.00	20.40
1005	H	D.S.	10 - 10	280.00	16.80

D.S. - Direct Subtraction Only

C.B. - Direct Subtraction & Credit Balance

* Credit Balance \$30.00 Extra

** Single, Double, Triple Cipher Keys - 10 Key

QUALITY SINCE 1918

VICTOR ADDING MACHINES

ADDING MACHINE COMPETITIVE PRICE LIST (Contd.)

Model	Hand- Elec.	Oper.	Capacity List. - Tot.	List Price	Ex. Tax
R. C. Allen (Contd.)					
1015	E	D.S.*	10 - 10	360.00	21.60
1115	E	D.S.	11 - 11	425.00	25.50
1313	E	D.S.	13 - 13	545.00	32.70
5189SC***	E	C.B.	8 - 9	355.00	21.30
5111***	E	C.B.	10 - 11	385.00	23.10
1302	E	C.B.	13 - 13	665.00	39.90
1303	E	D.S.	13 - 13	615.00	36.90
1055ST	E	D.S.	10 - 10	420.00	25.20
815CB	E	C.B.	8 - 8	335.00	20.10
915CB	E	C.B.	9 - 9	375.00	22.50
1015CB	E	C.B.	10 - 10	395.00	23.70

* Credit Balance \$30.00 Extra

*** Recall Key, Single, Double, Triple Cipher Keys-10 Key

Barrett

B192	H	D.S.	9 - 9	200.00	12.20
B192E	E	D.S.	9 - 9	290.00	17.60

Burroughs

J-215*	E	D.S.	8 - 8	315.00	20.79
J-216*	E	C.B.	8 - 8	350.00	23.10
J-217	E	D.S.	10 - 10	360.00	21.60
J-218	E	C.B.	10 - 10	394.00	23.64
J-219*	E	D.S.	7 - 8	294.00	19.40
J-220	E	C.B.	7 - 8	320.00	21.12
J-221	E	D.S.	8 - 9	326.00	19.56
J-222	E	C.B.	8 - 9	360.00	21.60
J-223	E	D.S.	10 - 11	370.00	22.20
J-224	E	C.B.	10 - 11	404.00	24.24
P-205	E	D.S.	8 - 8	315.00	20.79
P-206	E	C.B.	8 - 8	355.00	23.43
P-207	E	D.S.	10 - 10	360.00	21.60

* Now available in pastel colors.

QUALITY SINCE 1918

VICTOR ADDING MACHINES

ADDING MACHINE COMPETITIVE PRICE LIST (Contd.)

Model	Hand- Elec.	Oper.	Capacity List. - Tot.	List Price	Ex. Tax
Burroughs (Contd.)					
P-208	E	C. B.	10 - 10	395.00	23.70
P-450	E	C. B.	13 - 13	550.00	33.00
8-07-01	H		7 - 7	126.00	8.32
8-08-01	H		8 - 8	147.00	9.70
8-10-01	H		10 - 10	205.00	12.30
8-10-50	E		10 - 10	299.00	17.94
9-07-01	H	D. S.	7 - 7	173.00	11.42
9-08-01	H	D. S.	8 - 8	194.00	12.80
9-10-50	E	D. S.	10 - 10	368.00	22.08
9-10-01	H	D. S.	10 - 10	247.00	14.82

QUALITY SINCE 1918

VICTOR ADDING MACHINES

ADDING MACHINE COMPETITIVE PRICE LIST (Cont'd)

Model	Hand- Elec.	Oper.	Capacity List - Tot.	List Price	Ex. Tax
Clay					
124	H	D.S.	6 - 7	158.00	9.30
130	H	D.S.	8 - 9	174.00	11.54
104	E	D.S.	6 - 7	219.00	13.17
104-10	E	D.S.	7 - 7	229.50	14.37
178	E	D.S.	7 - 8	228.00	16.88
188-01 Green	E	D.S.	8 - 8	310.00	18.60
101-01	E	D.S.	8 - 9	355.00	19.50
107-01	E	C.B.	8 - 9	360.00	21.60
115-01	E	D.S.	10 - 11	363.00	21.90
115-01	E	C.B.	10 - 11	384.00	23.64
103-01	E	D.S.	11 - 12	399.00	23.94
169-01	E	C.B.	11 - 12	422.00	25.30
145-10 Key	E	C.B.	10 - 10	394.00	23.64
147-10 Key	E	C.B.	8 - 8	395.00	24.33
148	E	D.S.	7 - 8	399.80	24.37

Corona

7MD	H		6 - 7	99.80	6.43
8MD	H		7 - 8	119.50	7.51
10MD	H		9 - 10	124.50	8.07

Felt and Tonnant

202*	E	C.B.	11 - 12	352.00	23.70
202-9*	E	C.B.	8 - 9	360.00	24.60
202-00*	E	C.B.	9 - 9	370.00	25.30
202-2*	E	C.B.	9 - 9	370.00	19.80
202-M	E	C.B.	11 - 12	420.00	25.80
202M	E	C.B.	11 - 12	440.00	28.40
202C	E	C.B.	11 - 12	440.00	28.40

*Have both positive and negative balances

D.S. - Direct Subtraction Only
C.B. - Direct Subtraction & Credit Balance

QUALITY SINCE 1912

VICTOR ADDING MACHINES

ADDING MACHINE COMPETITIVE PRICE LIST (Contd.)

Model	Hand- Elec.	Oper.	Capacity List - Tot.	List Price	Ex. Tax
Clary					
124	H	D.S.	6 - 7	155.00	9.30
120	H	D.S.	8 - 9	194.00	11.64
104	E	D.S.	6 - 7	219.00	13.17
104.10	E	D.S.	7 - 7	239.50	14.37
178	E	D.S.	7 - 8	278.00	16.68
188.01 green	E	D.S.	8 - 8	310.00	18.60
101.01	E	D.S.	8 - 9	325.00	19.50
107.01	E	C.B.	8 - 9	360.00	21.60
112.01	E	D.S.	10 - 11	365.00	21.90
115.01	E	C.B.	10 - 11	394.00	23.64
103.01	E	D.S.	11 - 12	399.00	23.94
109.01	E	C.B.	11 - 12	425.00	25.50
145.10 Key	E	C.B.	10 - 10	394.00	23.64
147.10 Key	E	C.B.	8 - 8	362.00	21.72
148	E	D.S.	7 - 8	299.50	17.97

Corona

7MD	H		6 - 7	99.50	6.63
8MD	H		7 - 8	119.50	7.51
10MD	H		9 - 10	134.50	8.07

Felt and Tarrant

202*	E	C.B.	11 - 12	395.00	23.70
202-9*	E	C.B.	8 - 9	360.00	21.60
202-99*	E	C.B.	9 - 9	370.00	22.20
202-S*	E	C.B.	9 - 9	330.00	19.80
202-M	E	C.B.	11 - 13	430.00	25.80
220M	E	C.B.	11 - 13	440.00	26.40
202C	E	C.B.	11 - 13	440.00	26.40

*Have both positive and negative balances

D.S. - Direct Subtraction Only

C.B. - Direct Subtraction & Credit Balance

QUALITY SINCE 1918

VICTOR ADDING MACHINES

ADDING MACHINE COMPETITIVE PRICE LIST (Contd.)

Model	Hand- Elec.	Oper.	Capacity List.- Tot.	List Price	Ex. Tax
Friden					
AB 7	E	C.B.	7 - 8	304.00	18.24
AB 8	E	C.B.	8 - 9	319.00	19.14
AB10	E	C.B.	10 - 11	339.00	20.34
ABY7	E	C.B.	7 - 8	324.00	19.44
ABY8	E	C.B.	8 - 9	339.00	20.34
ABY10	E	C.B.	10 - 11	359.00	21.54
General					
	E	C.B.	9 - 10	169.00	10.14
Goleman					
	H	C.B.	8 - 9	189.50	9.01
Johnston					
A8	E	D.S.	8 - 9	325.00	16.25
A9	E	C.B.	8 - 9	350.00	17.50
A11	E	C.B.	10 - 11	375.00	17.81
Monroe					
308-11-001	H	D.S.	8 - 8	194.00	11.64
308-22-001	H	D.S.	8 - 8	247.00	14.82
308-28-001	H	D.S.	8 - 8	247.00	14.82
310-11-001	H	D.S.	10 - 10	247.00	14.82
310-22-001	H	D.S.	10 - 10	299.00	17.94
310-28-001	H	D.S.	10 - 10	299.00	17.94
408-11-001	E	D.S.	8 - 8	315.00	18.90
408-22-001	E	D.S.	8 - 8	368.00	22.08
408-28-001	E	D.S.	8 - 8	368.00	22.08

QUALITY SINCE 1918

VICTOR ADDING MACHINES

ADDING MACHINE COMPETITIVE PRICE LIST (Contd.)

Model	Hand- Elec. Oper.	Capacity List. - Tot.	List Price	Ex. Tax	
Monroe (Contd.)					
408-11-011	E	C.B.	8 - 8	336.00	20.16
408-22-011	E	C.B.	8 - 8	389.00	23.34
408-28-011	E	C.B.	8 - 8	389.00	23.34
408-11-011-R	E	C.B.	8 - 8	362.00	21.72
408-22-011R	E	C.B.	8 - 8	415.00	24.90
408-28--11R	E	C.B.	8 - 8	415.00	24.90
410-11-001	E	D.S.	10 - 10	368.00	22.08
410-11-001-1	E	D.S.	10 - 11	378.00	22.68
410-22-001	E	D.S.	10 - 10	420.00	25.20
410-28-001	E	D.S.	10 - 10	420.00	25.20
410-11-011	E	C.B.	10 - 10	378.00	22.68
410-22-011	E	C.B.	10 - 10	431.00	25.86
410-28-011	E	C.B.	10 - 10	431.00	25.86
410-11-011-R	E	C.B.	10 - 10	394.00	23.64
410-11-011-R1E	E	C.B.	10 - 11	404.00	24.24
410-22-011R	E	C.B.	10 - 10	446.00	26.76
410-28-011R	E	C.B.	10 - 10	446.00	26.76
410-11-011-BC	E	C.B.	10 - 10	457.00	27.42
408-11-082	E	C.B.	8 - 8	441.00	26.46
408-22-082	E	C.B.	8 - 8	494.00	29.64
408-28-082	E	C.B.	8 - 8	494.00	29.64
408-11-092	E	C.B.	8 - 8	467.00	28.02
408-22-092	E	C.B.	8 - 8	520.00	31.20
408-28-092	E	C.B.	8 - 8	520.00	31.20
410-11-082	E	C.B.	10 - 10	483.00	28.98
410-11-082-1	E	C.B.	10 - 11	494.00	29.64
410-22-082	E	C.B.	10 - 10	536.00	32.16
410-28-082	E	C.B.	10 - 10	536.00	32.16
410-11-092	E	C.B.	10 - 10	509.00	30.54
410-11-092-1	E	C.B.	10 - 11	520.00	31.20
410-22-092	E	C.B.	10 - 10	562.00	33.72
410-28-092	E	C.B.	10 - 10	562.00	33.72
508-11-011	H	C.B.	8 - 9	221.00	13.26
811-A-13	E	D.S.	8 - 8	330.00	19.80
811-A-10	E	C.B.	8 - 8	365.00	21.90
011-A-13	E	D.S.	10 - 10	380.00	22.80
001-A-10	E	C.B.	10 - 10	415.00	24.90
911-V-11	E	C.B.	9 - 10	365.00	21.90
111-V-11	E	C.B.	11 - 12	415.00	24.90
111-V-12	E	C.B.	11 - 12	441.00	26.46

QUALITY SINCE 1918

VICTOR ADDING MACHINES

ADDING MACHINE COMPETITIVE PRICE LIST (Contd.)

Model	Hand- Elec.	Capacity Oper. List. - Tot.	List Price	Ex. Tax	
National					
8	H	8 - 8	150.00	9.00	
8E	E	8 - 8	265.00	15.90	
9	H	D.S.	195.00	13.65	
9EL	E	D.S.	300.00	18.00	
9EN	E	C.B.	335.00	20.10	
9KL	E	D.S.	325.00	19.50	
9KLS	E	D.S.	355.00	21.30	
9KN	E	C.B.	360.00	21.60	
9KNS	E	D.S.	400.00	24.00	
10	H	10 - 10	210.00	12.60	
10E	E	10 - 10	305.00	18.30	
67	H	6 - 7	130.00	7.80	
77	H	D.S.	160.00	9.60	
79EL	E	D.S.	285.00	17.10	
79KL	E	D.S.	310.00	18.60	
11	H	D.S.	10 - 10	245.00	14.70
11EN	E	C.B.	10 - 10	375.00	22.50
11EL	E	D.S.	10 - 10	340.00	20.40
11KL	E	D.S.	10 - 10	365.00	21.90
11KLS	E	D.S.	10 - 10	410.00	24.60
11KN	E	C.B.	10 - 10	400.00	24.00
11KNS	E	D.S.	10 - 10	440.00	26.40
31EL*	E	D.S.	10 - 10	485.00	29.10
31KL*	E	D.S.	10 - 10	510.00	30.60
51EL**	E	D.S.	10 - 10	540.00	32.40
51KL**	E	D.S.	10 - 10	565.00	33.91
21E**	E	D.S.	10 - 10	700.00	42.00
31EN*	E	C.B.	10 - 10	520.00	31.20
31KN*	E	C.B.	10 - 10	545.00	32.70
51EN**	E	C.B.	10 - 10	575.00	34.50
51KN**	E	C.B.	10 - 10	600.00	36.00
STATEMENT -					
16KN SR	E	C.B. 7&9 7&9	520.00	31.20	
16EN SR	E	C.B. 7&9 7&9	485.00	29.10	

*Automatic Grand Total Duplex

SR - Single Register

**Selective and Grand Total Duplex

QUALITY SINCE 1918

VICTOR ADDING MACHINES

ADDING MACHINE COMPETITIVE PRICE LIST (Contd.)

Model	Hand- Elec.	Oper.	Capacity List. - Tot.	List Price	Ex. Tax
National (Contd.)					
BOOKKEEPING					
17KND	E	C.B.	7 - 9	668.00	39.95
18KND	E	C.B.	10 - 10	668.00	39.95
57KND	E	C.B.	7 - 9	832.00	49.75
58KND	E	C.B.	10 - 10	832.00	49.75
17KFP	E.	C.B.	7 - 9	798.00	47.72
18KFP	E.	C.B.	10 - 10	798.00	47.72
57KFP	E.	C.B.	7 - 9	963.00	57.59
58KFP	E.	C.B.	10 - 10	963.00	57.59
158K	E.	C.B.	10 - 10	1128.00	67.45
158KA	E	C.B.	10 - 10	1128.00	67.45
157K	E	C.B.	7 - 9	1128.00	67.45

--Add \$50.00 for wide carriage on all National models. --

Odhner

H-9-S	H	D.S.	8 - 9	129.50	7.77
H-11-S	H	D.S.	10 - 11	199.00	11.94
X-8-S-7	E.	D.S.	8 - 8	310.00	18.60
X-9-S-7	Eq	D.S.	9 - 9	310.00	18.60
X-9-C-7	E	C.B.	9 - 9	348.00	20.88
X-11-S-7	E	D.S.	10 - 11	345.00	20.70
X-11-C-7	E	C.B.	10 - 11	385.00	23.10
XX-11-C-6	E	C.B.	10 - 11	415.00	24.90
LX11C-5	E		10 - 11	425.00	25.50
MX11C-24	E		10 - 11	425.00	25.50
TX11C-6-24	E		10 - 11	450.00	27.00
TX11C-6-35	E		10 - 11	470.00	28.20
TX11C-6-46	E		10 - 11	490.00	29.40
TX11C-6-35 1)	E		10 - 11	510.00	30.60
XX11C7*	E	C.B.	10 - 11	425.00	25.50
LX11C7**	E	C.B.	10 - 11	450.00	27.00

* with Push Button Multiplier

** with Hour, Minute, Foot, Inch, Pound, Sterling

Add \$50.00 for 9" carriage plus 6% Excise Tax.

QUALITY SINCE 1918

VICTOR ADDING MACHINES

ADDING MACHINE COMPETITIVE PRICE LIST (Contd.)

Model	Hand- Elec.	Oper.	Capacity List.-Tot.	List Price	Ex. Tax
Olivetti					
Electrosumma 14	E		C.B. 10 - 11	345.00	18.98
Duplex 21-2 reg.	E		C.B. 13 - 14	460.00	25.30
Electrosumma CR				585.00	32.18
Electrosumma CR-S				695.00	38.23
Summa 15	H		C.B. 10 - 11	188.00	10.81
Multisumma	E		C.B. 10 - 11	475.00	26.13
Electrosumma CR-B				485.00	26.68
Audit 202				1150.00	63.25

Plus

506	H		6 - 7	135.00	8.10
509	H		12 - 13	165.00	9.90
512	H		12 - 13	200.00	12.00

Precisa

111S*	E		C.B. 8 - 9	320.00	17.60
111T*	E		C.B. 8 - 9	320.00	17.60
110T*	E		C.B. 10 - 11	355.00	19.52
111TWC*	E		C.B. 8 - 9	388.00	21.34
111TWC**	E		C.B. 8 - 9	398.00	21.89
110TWC*	E		C.B. 10 - 11	423.00	23.26
110TWCs**	E		C.B. 10 - 11	433.00	23.81

*All machines except 103 have Recall Key. **Split platen.
Carrying Case Hand Model (M10) \$18.00. Elec.(M12) \$21.00.

Remington Rand

7161-5	H		6 - 6	109.75	7.24
7171-5	H		7 - 7	126.00	8.32
7190-5	H		9 - 9	152.00	10.03
7171-13	H		7 - 7	195.00	12.87
7190-13	H		9 - 9	223.00	14.72

QUALITY SINCE 1918

VICTOR ADDING MACHINES

ADDING MACHINE COMPETITIVE PRICE LIST (Contd.)

Model	Hand- Elec.	Oper.	Capacity List. - Tot.	List Price	Ex. Tax
Remington Rand (Contd.)					
7371-5	H	D.S.	7 - 7	168.00	11.09
7382-5	H	D.S.	7 - 8	184.00	12.14
7381-5	H	D.S.	8 - 8	194.00	12.80
7370-5	H	C.B.	7 - 7	204.00	13.46
7380-5	H	C.B.	8 - 8	242.00	15.97
7371-13	H	D.S.	7 - 7	240.00	15.84
7382-13	H	D.S.	7 - 7	257.00	16.96
7381-13	H	D.S.	8 - 8	268.00	17.69
7370-13	H	C.B.	7 - 7	279.00	18.41
7380-13	H	C.B.	8 - 8	320.00	21.12
9371-5	E	D.S.	7 - 7	278.00	18.35
9382-5	E	D.S.	7 - 7	294.00	19.40
9381-5	E	D.S.	8 - 8	315.00	20.79
9370-5	E	C.B.	7 - 7	310.00	20.46
9380-5	E	C.B.	8 - 8	362.00	23.89
9371-13	E	D.S.	7 - 7	359.00	23.69
9382-13	E	D.S.	7 - 7	376.00	24.82
9381-13	E	D.S.	8 - 8	399.00	26.33
9370-13	E	C.B.	7 - 7	310.00	20.46
9380-13	E	C.B.	8 - 8	362.00	23.89
9392-5	E	D.S.	8 - 9	320.00	19.20
9393-5	E	C.B.	8 - 9	368.00	22.08
73101-5	H	D.S.	10 - 10	247.00	14.82
73100-5	H	C.B.	10 - 10	294.00	17.64
73112-5	H	D.S.	10 - 11	294.00	17.64
93101-5	E	D.S.	10 - 10	368.00	22.08
93100-5	E	C.B.	10 - 10	394.00	23.64
93112-5	E	D.S.	10 - 11	394.00	23.64
93110-5	E	C.B.	11 - 11	420.00	25.20
93130-5	E	C.B.	13 - 13	550.00	33.00
Add for 13" Automatic Cross Tabulator Carriage . . . 94.50					
Add for colors \$10.00 plus \$.66 and \$16.50 plus \$1.65.					
Swift					
E	H		9 - 9	99.50	5.97

QUALITY SINCE 1918

VICTOR ADDING MACHINES

ADDING MACHINE COMPETITIVE PRICE LIST (Contd.)

Model	Hand- Elec.	Oper.	Capacity List. - Tot.	List Price	Ex. Tax
Underwood - Sundstrand					
78S	H	D.S.	7 - 8	184.00	12.14
78SP	E	D.S.	7 - 8	294.00	19.40
7120	H	D.S.	7 - 8	184.00	11.04
7120P	E	D.S.	7 - 8	294.00	17.64
8120	H	D.S.	8 - 8	194.00	11.64
8120P	E	D.S.	8 - 8	315.00	18.90
8140	H	C.B.	8 - 8	241.00	14.46
8140P	E	C.B.	8 - 8	362.00	21.72
9120P	E	D.S.	8 - 9	320.00	19.20
9104P	E	C.B.	8 - 9	367.00	22.02
9144SP	E	C.B.	9 - 9	682.00	40.92
9244SP Dup	E	C.B.	9 - 9	994.00	59.64
10120	H	D.S.	10 - 10	247.00	14.82
10120P	E	D.S.	10 - 10	367.00	22.02
10140	H	C.B.	10 - 10	294.00	17.64
10140P	E	C.B.	10 - 10	394.00	23.64
10140PC	E	C.B.	10 - 10	495.00	29.70
11120P	E	D.S.	10 - 11	378.00	22.68
11140P	E	C.B.	10 - 11	404.00	24.24
13140P	E	C.B.	10 - 13	550.00	33.00
10240P Dup	E	C.B.	10 - 10	519.00	31.14
11240P Dup	E	C.B.	10 - 11	556.00	33.36
13240P Dup	E	C.B.	13 - 13	651.00	39.06
112040SP Dup E	E	C.B.	10 - 11	835.00	50.10
11140SP	E	C.B.	10 - 11	577.00	34.62
13240SP	E	C.B.	13 - 13	915.00	54.90

Regina

U-900	H		6 - 7	112.00	6.72
U-904	H	D.S.	6 - 7	145.00	8.70
W-900	H		7 - 8	131.00	7.86
W-904	H	D.S.	7 - 8	155.00	9.30
T-900	H		8 - 8	144.00	8.64
T-904	H	D.S.	8 - 8	166.00	9.96
Y-904	E	D.S.	7 - 8	256.00	15.36

QUALITY SINCE 1918

VICTOR ADDING MACHINES

ADDING MACHINE COMPETITIVE PRICE LIST (Contd.)

Model	Hand- Elec.	Oper.	Capacity List. - Tot.	List Price	Ex. Tax
-------	----------------	-------	--------------------------	---------------	------------

Regina (Contd.)

X-904	E	D.S.	8 - 8	268.00	16.08
A904	E	D.S.	8 - 10	286.00	17.16

Electric Models - Straight adding available at \$25.00 less.
All machines available in grey or ivory.

Voss

S-18	E	C.B.	9 - 10	360.00	17.50
S-21	E	C.B.	10 - 11	380.00	18.75
S-23	E	C.B.*	10 - 11	495.00	24.75

* 2 Total

QUALITY SINCE 1918

MISCELLANEOUS INFORMATION

COUNTY CODING

Use when writing orders.

For tabulation purposes it is necessary that we have an accurate record of county sales. All counties in the United States are designated by an individual coding number and this number must be written on the order. Place the coding on the third line of the "sold to" address on the order, following city and state.

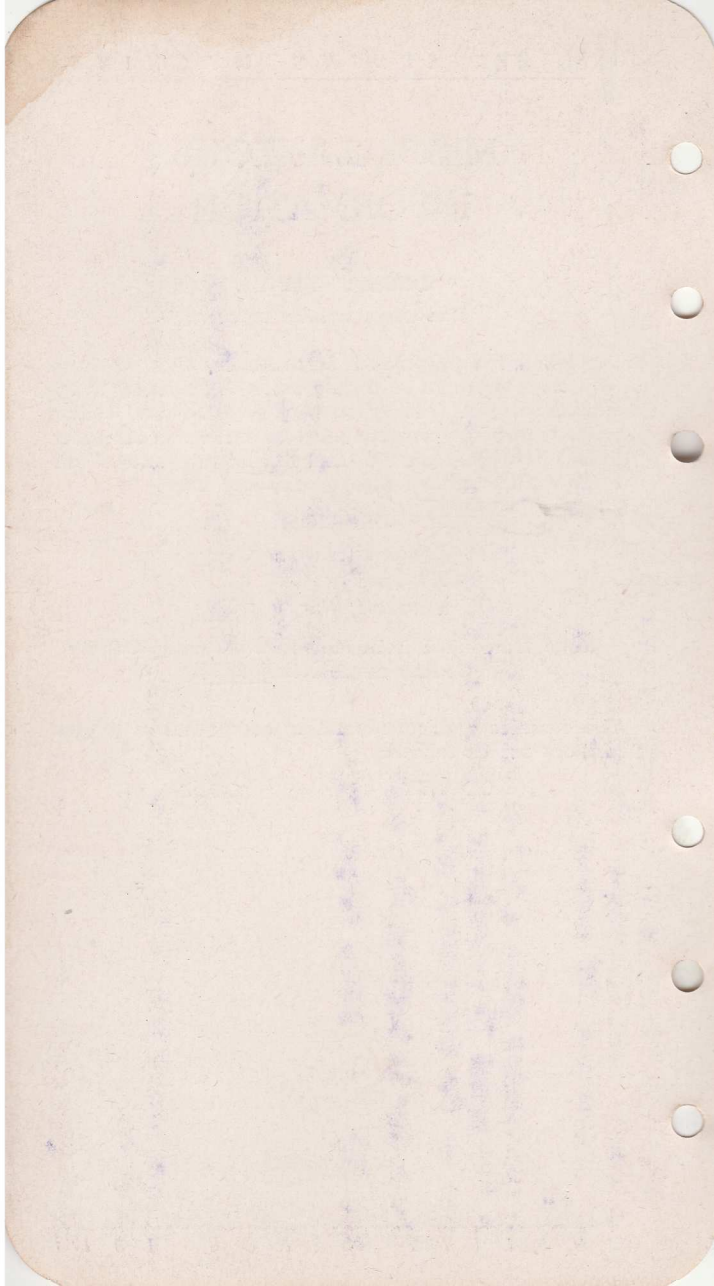
EXAMPLE:

John Doe Ice Cream Co.
201 Grand Avenue
Milwaukee, Wisc. 48079

(Note: Milwaukee is in Milwaukee County. County Coding number is 48079.)

The counties and corresponding code numbers in your territory are as follows:

COUNTY	CODE
--------	------



On adding machine sales we permit your allowing 25% discount to schools on equipment sold for instructional use. On school sales of this nature you are guaranteed 10% earnings. If not for classroom use, the discount can be 10%.

On calculator sales a 10% discount is allowed on the 72, 73 and 74 models. On the model 75 calculator a price of \$554.35 is applicable. \$554.35 is the same as the Government price.

The order is written this way:

One (1)		Auto. Print. Calc.		75-85-54		\$635.00
				Less N. B. Discount		63.50
				Less H. O. Allow.		17.15
						<u>\$554.35</u>

Plus taxes if applicable

Please carry this information in your product and price manual for easy reference.

Let's get more school business.

$$\begin{array}{r}
 261.00 \\
 25 \\
 \hline
 180500 \\
 2200 \\
 \hline
 702550
 \end{array}$$

$$\begin{array}{r}
 261.00 \\
 25 \\
 \hline
 180711
 \end{array}$$

